




# Climatic Bulletin

May 2012

 Max  
temperature

 Min  
temperature

 Mean  
temperature

 Precipitation

 Sunshine  
duration



May started with a dry and warm decameron. It was followed by a second one which was very cold with strong phenomena for the whole area. During the last ten days the variation of temperature was close to normal values, while locally heavy rainfalls and thunderstorms recorded .



ΕΘΝΙΚΗ  
ΜΕΤΕΩΡΟΛΟΓΙΚΗ  
ΥΠΗΡΕΣΙΑ

HELLENIC NATIONAL METEOROLOGICAL SERVICE



## Temperature

### First Decameron

**Minimum:** the highest values over Ionian and Aegean area.

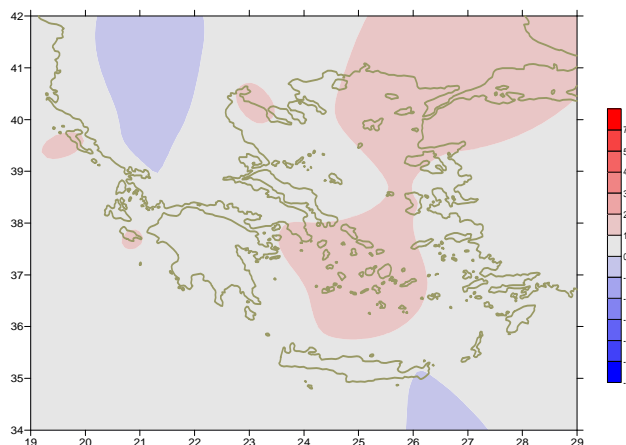
More specific:

19.8°C in Zakynthos (1/5), 21.4°C in Rodos(8/5),  
20.4°C in Naxos (9/5), 20.6°C in Paros (9/5).

**Maximum:** high values mainly over mainland.

More specific:

32.5°C in Serres (2-3/5), 32.6°C in Argos (2/5),  
32.7°C in N. Filadelfia (3/5).



*Deviation of mean temperature from normal values*

### Second Decameron

**Minimum:** low values from 15/5 to 19/5.

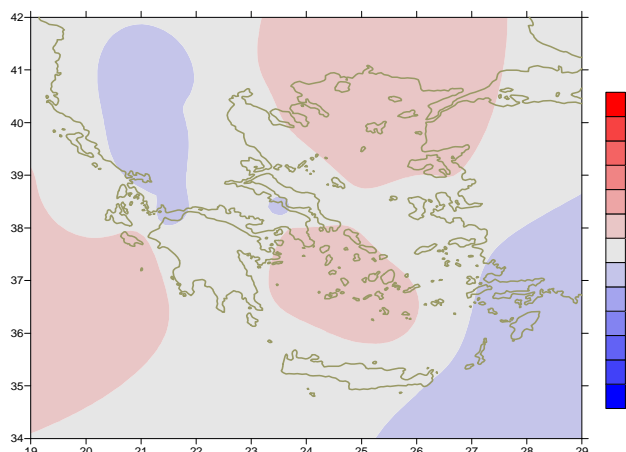
More specific:

8°C in Larisa at 17/5,  
3.9°C in Tripoli, 8.2°C in Kalamata and 9.2°C in Spata  
at 18/5.

**Maximum:** low values at the same period (15-19/5).

More specific:

13.4°C in Ioannina (15/5), 16.6°C in Elefsina (18/5)  
16.7°C in Mylos (18/5).



*Deviation of maximum temperature from normal values*

### Third Decameron

**Minimum:** low values over central and northern mainland (23-25/5).

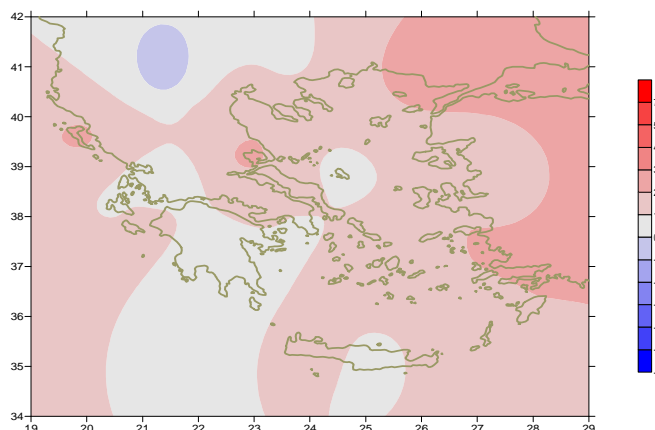
More specific (the lowest):

7.4°C in Kastoria, 8.2°C in Kozani at 23/5,  
7°C in Desfina, 9.6°C in Edessa at 24/5.

**Maximum:** very low values in the middle of the period.

For example:

17.6°C in Alexandroupoli,  
18°C in Tripoli, 19.5°C in Volos,  
19.2°C in Skyros at 24/5.



*Deviation of minimum temperature from normal values*



## Precipitation

### First Decameron

Dry period with exception of northern parts (9-10/5)..

More specific:

*11mm in Florina at 9/5,*

*7mm in Thessaloniki at 10/5,*

*6mm in Kozani at 10/5.*

### Second Decameron

Strong rainfalls and thunderstorms from 14/5 to 18/5

which gradually affected the whole area.

More specific:

*36mm in Arta, 43mm in Serres at 15/5,*

*63mm in Limnos, 92mm in Skyros at 18/5.*

### Third Decameron

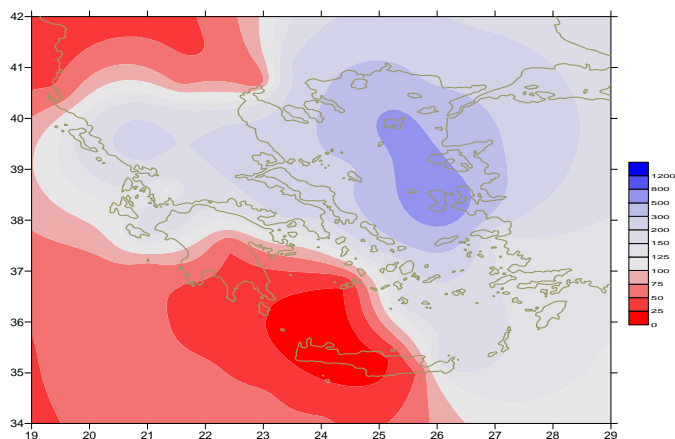
Remarkable rainfalls and thunderstorms temporarily over northern mainland ,north and eastern Aegean.

More specific:

*39mm in Edessa, 36mm in Larisa at 26/5,*

*34mm in Alexandroupoli at 28/5.*

*33mm in Ioannina, 53mm in Ikaria at 31/5.*



*Deviation of monthly precipitation height from normal values (%)*

## TABLE OF MEAN VALUES

STATION	Longitude	Latitude	Tmean	TX	TN	RR	INST
SERRES	23,53	41,07	19,8	26,5	13,1	104	172
FLORINA	21,40	40,78	16,3	21,5	8,5	96	214
KASTORIA	21,27	40,45	16,8	22,3	9,5	59	222
TRIKALA_IMATHIAS	22,55	40,60					
THESSALONIKI	22,97	40,52	20,8	25,1	13,7	53	243
CHRYSOUPOLI	24,62	40,92	19,6	23,3	14,6	117	242
ALEXANDROUPOLI	25,95	40,85	19,9	23,8	13,7	92	277
KOZANI	21,83	40,28	16,7	21,8	10,2	77	
KERKYRA	19,92	39,62	20,7	24,7	15,1	61	295
IOANNINA	20,82	39,70	17,2	22,5	11,1	161	211
PREVEZA	20,76	38,91	19,7	23	15,3	42	
TRIKALA_THESSALIAS	21,77	39,52					
LARISA	22,45	39,65	20,1	26,1	12,4	87	265
LIMNOS	25,23	39,92	19,6	23,8	14,4	134	299
ARTA	21,00	39,17					
AGHIALOS	22,78	39,21	20,4	24,9	14,1	87	268
MYTILINI	26,60	39,05	21,1	25	16,5	81	318
VELO	22,77	37,97					
AGRINIO	21,35	38,60	20,3	25,9	12,3	54	269
LAMIA	22,43	38,87					
ANDRAVIDA	21,28	37,92	20,2	24	13,4	34	291
SKYROS	24,48	38,96	20	22,8	15,7	47	267
ARGOSTOLI	20,50	38,12	20	23,1	15,6	22	320
ARAXOS	21,42	38,15	20,3	23,9	14	35	288
TANAGRA	23,57	38,33	20,3	24,7	12,9	61	267
HIOS	26,13	38,35	20,5	23,2	14,6	118	310
PYRGOS	21,42	37,67	20,9	25	13,3	16	243
TRIPOLI	22,40	37,52					
TATOI	23,78	38,10	20,5	24,7	13,3	24	
HELLINIKO	23,73	37,90	21,8	25,3	16,6	22	298
ELEYSINA	23,55	38,07	22,1	26,4	16,3	14	
ZAKYNTHOS	20,88	37,75	21	24,9	16,5	27	321
SAMOS	26,92	37,68	21,2	24,7	16,1	23	
ARGOS	22,75	37,63					
KALAMATA	22,02	37,07	20,1	25,1	12,5	14	299
NAXOS	25,37	37,10	20,6	23,1	17,3	16	343
METHONI	21,70	36,82	19,2	22,9	15,1	4	331
MHLOS	24,43	36,73					
SPATA	23,95	37,95	20	24,8	14,3	34	
KOS	27,08	36,80	20,1	23,1	16,9	5	
KYTHIRA	22,98	36,15					
SANTORINI	25,41	36,41	20,9	24	17,4	10	335
SOUDA	24,12	35,55	20,9	25	16	0	349
RODOS	28,08	36,40	21	23,4	17,8	19	337
MYKONOS	25,35	37,43	20	22,5	17,9	14	
HERAKLEIO	25,18	35,33	20,9	23,9	15,5	4	348
IERAPETRA	25,73	35,02					
SITEIA	26,10	35,21	20,4	23,9	16,7	22	336
RETHYMNO	24,50	35,36					
TYMPAKI	24,76	35,06	20,8	24,1	14	0	358
KASTELI	25,33	35,18	19,3	24	12,9	1	306
KARPATOS	27,15	35,42	20,7	23,6	18,5	8	
PAROS	25,13	37,02	20,7	23,9	16,7	2	325
SYROS	24,95	37,42	20,8	24,5	16,9	0	332
IKARIA	26,35	37,68	21	20,7	19,2	86	

**TABLE OF DEVIATIONS  
FROM NORMAL VALUES**

STATION	TMEAN ( deviation ) (I)	PRECI ( deviation % ) (II)
SERRES	0.3	213
FLORINA	-0.7	157
THESSALONIKI	1.3	120
ALEXANDROUPOLI	1.6	253
KOZANI	-0.1	134
KERKYRA	1.1	168
IOANNINA	-0.2	241
LARISA	0.5	234
LIMNOS	10.2	575
AGHIALOS	0.9	232
MYTILINI	0.9	382
AGRINIO	0	115
SKYROS	0.7	265
ARGOSTOLI	0.5	116
ARAXOS	0.5	187
HIOS	1	771
HELLINIKO	1.2	153
ZAKYNTHOS	1.2	159
SAMOS	0.7	148
KALAMATA	0.3	61
NAXOS	1.2	163
METHONI	0.1	29
SANTORINI	1.7	17
SOUDA	0.9	7
RODOS	0.5	136
HERAKLIO	0.6	26
SITIA	0	169

(I) deviation of mean temperature from normal values  
 (II) deviation of monthly precipitation height from normal values %.

# Climatic Bulletin

## General Description

Precipitation amounts were higher than normal values over central and northern Greece, while they were very higher over eastern Aegean islands. In contrast they were lower over island of Creta, Cyclades and southern Ionian area. The mean temperature varied slightly higher than normal values with exception of Northwestern mainland.

### Climatic Parameters :

- ❖ **Normal Values** : normal values for various parameters (temperature, precipitation, etc) are defined as mean values calculated for 30 years. These normal values are used as basis and represent the mean situation. They can be specified in 10 daily, monthly, seasonally and yearly level and are used for the trend comparison of 10 days, month, season or year as: rainy decameron, mild winter, cool August etc.

### Measurement :

- ❖ **Precipitation**  
1 mm = 1 litre/m<sup>2</sup>

### Table Legend :

Tmean : Mean Temperature  
 TN : Minimum Temperature  
 TX : Maximum Temperature  
 RR : Precipitation height(mm)  
 INST : Sun Duration (hours)

### UTC hours (Universal Time Coordinates) in Greece :

- ❖ Winter : UTC hour = local hour - 2
- ❖ Summer : UTC hour = local hour - 3

© Hellenic National Meteorological Service  
 Reproduction is prohibited without written authorization  
 14 El.Venizelou 16777  
 Helliniko, Athens  
 Greece