



Climatic Bulletin

October 2012

 **Max
temperature**

 **Min
temperature**

 **Mean
temperature**

 **Precipitation**

 **Sunshine
duration**



October started with very high values of temperature which declined soon. Locally strong rainfalls and thunderstorms recorded, from the middle of month till the end, which caused significant floods over Greek mainland and over most parts of Aegean.



ΕΘΝΙΚΗ
ΜΕΤΕΩΡΟΛΟΓΙΚΗ
ΥΠΗΡΕΣΙΑ

HELLENIC NATIONAL METEOROLOGICAL SERVICE



Temperature

First Decameron

Minimum: high values at the beginning.

More specific (varied) :

from 12°C to 15°C over NW mainland,

from 10°C to 22°C over rest mainland,

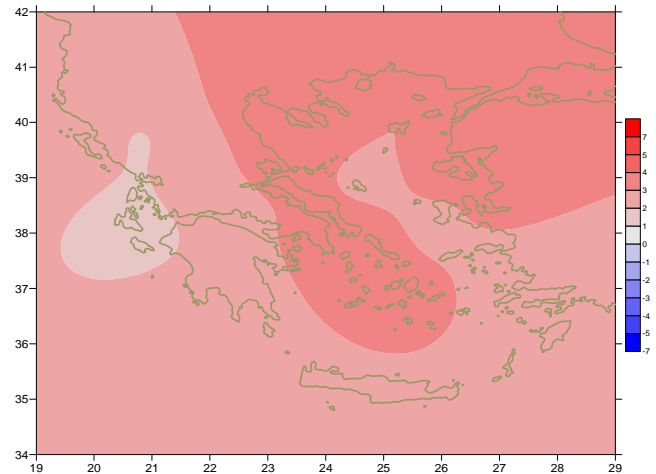
from 15°C to 23°C over islands.

Maximum: high values which declined gradually.

More specific:

34.6°C in Leonidio, 34.5°C in Serres,

35.2°C in Hellinikon (extreme value) at 1/10.



Deviation of mean temperature from normal values

Second Decameron

Minimum:

More specific (varied) :

from 6°C to 17°C over NW mainland,

from 10°C to 20°C over rest mainland,

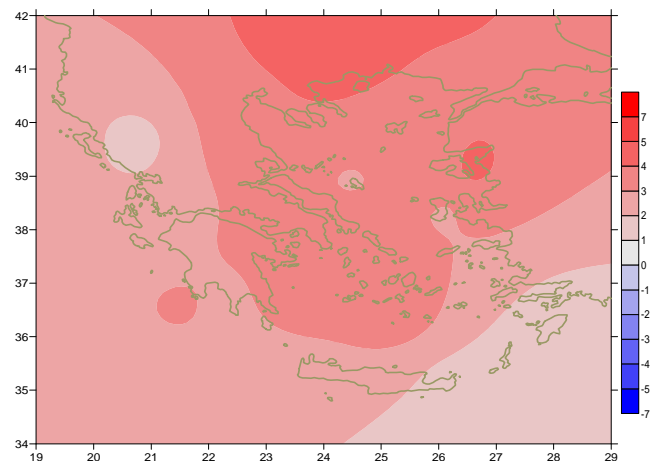
from 16°C to 23°C over islands.

Maximum: very high values in the middle of period.

More specific:

32°C in Iraklion (15/10),

32.9°C in Kasteli, 31.4°C in Syros (16/10).



Deviation of maximum temperature from normal values

Third Decameron

Minimum: relatively low values at the beginning and the end.

More specific (the lowest) :

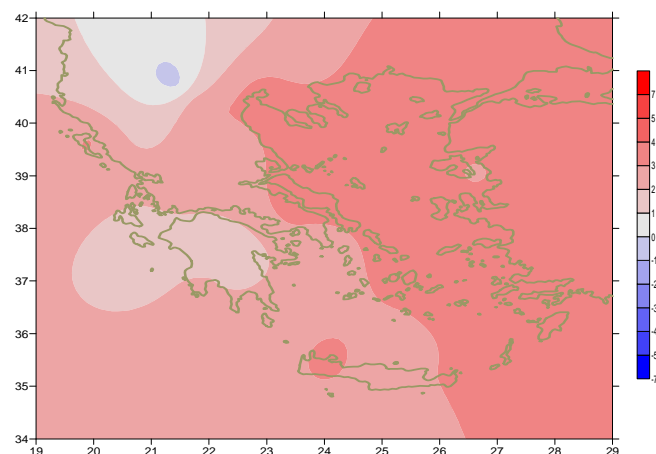
6°C in Florina at 22/10 and 31/10.

Maximum: high values which declined till the end.

For example (varied):

from 20°C to 26°C between 21-26/10 and

from 15°C to 24°C afterwards.



Deviation of minimum temperature from normal values



P r e c i p i t a t i o n

First Decameron

Local rainfalls and thunderstorms over west, central and southern parts during last day.

More specific:

*11m in Leonidio and Aghialos ,
7mm in Elefsina, 8mm in Karpathos at 10/10.*

Second Decameron

Strong rainfalls and thunderstorms temporarily over Ionian sea and over west, central and southern mainland.

More specific:

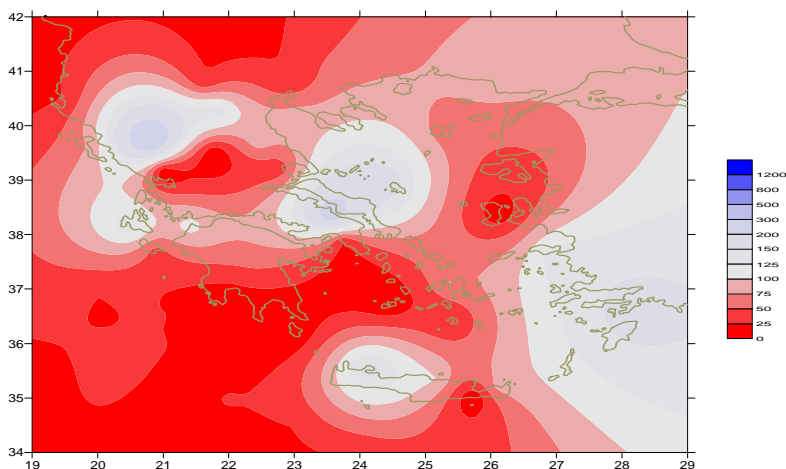
*59mm in Argostoli at 13/10 and 54mm at 15/10,
27mm in Ioannina at 13/10 and 44mm at 16/10,
49mm in Konitsa at 14/10 and 25mm at 16/10,
19mm in Araxos at 13/10 and 36mm at 14/10.*

Third Decameron

Strong rainfalls and thunderstorms over East and South parts at 22,23,24,29/10. Also over Northwest parts at 27,28/10.

More specific:

*96mm in Karistos, 26mm in Rodos at 22/10,
29mm in Syros at 23/10 , 42mm in Kerkira at 27/10,
68mm in Konitsa at 27/10 and 127mm in Ioannina at 28/10,
34mm in Alexandroupoli and 37mm in Skyros at 29/10.*



*Deviation of monthly precipitation
height from normal values (%)*

TABLE OF MEAN VALUES

STATION	Longitude	Latitude	Tmean	TX	TN	RR	INST
SERRES	23,53	41,07	18,7	26	11,7	25	151
FLORINA	21,40	40,78	14,3	22,1	6,3	89	131
KASTORIA	21,27	40,45	15,6	21,8	8,5	106	182
TRIKALA_IMATHIAS	22,55	40,60					
THESSALONIKI	22,97	40,52	19,7	24,4	14,3	27	215
CHRYSOUPOLI	24,62	40,92	18,9	24,1	13,8	21	223
ALEXANDROUPOLI	25,95	40,85	19,1	24	14,1	45	224
KOZANI	21,83	40,28	16,3	22,1	10,9	73	
KERKYRA	19,92	39,62	20,8	25,4	16,5	120	200
IOANNINA	20,82	39,70	16,8	22,9	10,3	279	161
PREVEZA	20,76	38,91	21,4	25,7	17,2	49	
TRIKALA_THESSALIAS	21,77	39,52					
LARISA	22,45	39,65	19,2	25,8	12,3	40	174
LIMNOS	25,23	39,92	19,6	23,6	15,8	23	209
ARTA	21,00	39,17					
AGHIALOS	22,78	39,21	19,9	25,2	14,9	20	201
MYTILINI	26,60	39,05	21,8	25,7	17,5	13	241
VELO	22,77	37,97					
AGRINIO	21,35	38,60	19,9	26,7	13,7	77	227
LAMIA	22,43	38,87					
ANDRAVIDA	21,28	37,92	20,6	25,7	15,4	68	215
SKYROS	24,48	38,96	21	23,4	18,6	66	198
ARGOSTOLI	20,50	38,12	21,5	25,2	17,8	156	232
ARAXOS	21,42	38,15	20,9	25,7	15,8	96	237
TANAGRA	23,57	38,33	20,2	25,2	15	129	194
HIOS	26,13	38,35	20,9	24,4	16,8	3	237
PYRGOS	21,42	37,67	21,7	27,1	15,7	61	200
TRIPOLI	22,40	37,52	16,8	23,7	9,4	48	190
TATOI	23,78	38,10	20,3	25,6	15,2	30	
HELLINIKO	23,73	37,90	22,7	26,9	18	12	199
ELEYSINA	23,55	38,07	22,3	26,5	18,1	26	
ZAKYNTHOS	20,88	37,75	21,3	25,7	17	63	224
SAMOS	26,92	37,68	22,1	25,9	18,3	39	
ARGOS	22,75	37,63					
KALAMATA	22,02	37,07	20,8	26,6	15,1	22	233
NAXOS	25,37	37,10	22,4	24,9	19,9	30	224
METHONI	21,70	36,82	22,4	26,6	17,5	11	237
MHLOS	24,43	36,73					
SPATA	23,95	37,95	21,7	25,2	16	27	
KOS	27,08	36,80	21,7	24,8	19,1	33	
KYTHIRA	22,98	36,15					
SANTORINI	25,41	36,41	22,6	25,4	19,4	6	268
SOUDA	24,12	35,55	21,7	25,8	18,2	135	232
RODOS	28,08	36,40	22,9	25,7	20	103	250
MYKONOS	25,35	37,43	21,4	23,8	19,7	21	
HERAKLEIO	25,18	35,33	22,4	25,6	18,9	69	227
IERAPETRA	25,73	35,02					
SITEIA	26,10	35,21	22,3	25	19,7	48	233
RETHYMNO	24,50	35,36					
TYMPAKI	24,76	35,06					
KASTEI	25,33	35,18	20,2	24,8	15,6	50	230
KARPATOS	27,15	35,42	23	25,6	20,8	25	
PAROS	25,13	37,02	22,2	25,5	19,7	36	245
SYROS	24,95	37,42	22	25,4	19,6	33	241
IKARIA	26,35	37,68	20,8	22,8	19,3	17	

TABLE OF DEVIATIONS
FROM NORMAL VALUES

STATION	TMEAN (deviation) (I)	PRECI (deviation %) (II)
SERRES	3.3	57
FLORINA	2.9	130
THESSALONIKI	3.6	67
ALEXANDROUPOLI	3.6	89
KOZANI	2.9	144
KERKYRA	2.4	81
IOANNINA	1.9	292
LARISA	3.1	85
LIMNOS	3	64
AGHIALOS	3.2	31
MYTILINI	3.5	34
AGRINIO	2.1	68
SKYROS	2.9	171
ARGOSTOLI	1.8	146
ARAXOS	2	112
HIOS	2.9	27
HELLINIKO	3.4	25
ZAKYNTHOS	1.7	43
SAMOS	2.9	135
KALAMATA	2	22
NAXOS	3.1	76
METHONI	2.8	11
SANTORINI	3.7	21
SOUDA	2.7	169
RODOS	2.3	160
HERAKLIO	2.5	100
SITIA	2.2	84

(I) deviation of mean temperature from normal values
(II) deviation of monthly precipitation height from normal values %.

Climatic Bulletin

General Description

Precipitation amounts were higher than normal values over Northwest Greece (both mainland and islands) and locally over Central, South Aegean, Crete, Dodecanese, while over rest parts were lower in general. The mean temperature varied higher than normal values everywhere.

Climatic Parameters :

- ❖ **Normal Values** : normal values for various parameters (temperature, precipitation, etc) are defined as mean values calculated for 30 years. These normal values are used as basis and represent the mean situation. They can be specified in 10 daily, monthly, seasonally and yearly level and are used for the trend comparison of 10 days, month, season or year as: rainy decameron, mild winter, cool August etc.

Measurement :

- ❖ **Precipitation**
1 mm = 1 litre/m²

Table Legend :

Tmean : Mean Temperature
 TN : Minimum Temperature
 TX : Maximum Temperature
 RR : Precipitation height(mm)
 INST : Sun Duration (hours)

UTC hours (Universal Time Coordinates) in Greece :

- ❖ Winter : UTC hour = local hour - 2
- ❖ Summer : UTC hour = local hour - 3

© Hellenic National Meteorological Service
 Reproduction is prohibited without written authorization
 14 El.Venizelou 16777
 Helliniko, Athens
 Greece