



Climatic Bulletin

August 2013

 **Max
temperature**

 **Min
temperature**

 **Mean
temperature**

 **Precipitation**

 **Sunshine
duration**



August was a hot month in general with a peak of high maximum values of temperature on the 28th. Meanwhile thunderstorms recorded over mainland and gale force northern winds affected Aegean area.

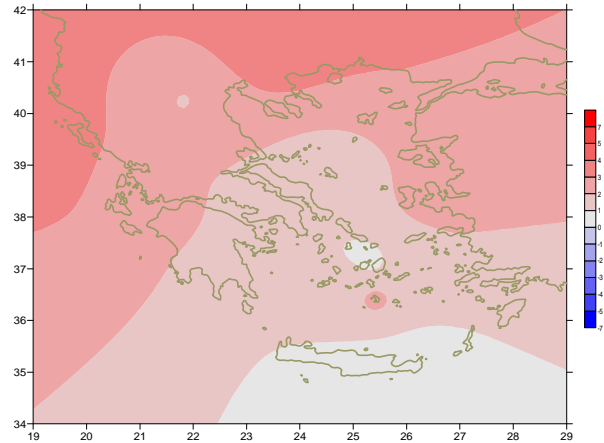


Temperature

First Decameron

Minimum: More specific (varied) :
 from 12°C to 23°C over North mainland,
 from 16°C to 26°C over central mainland,
 from 19°C to 27°C over rest parts.

Maximum: More specific (varied) :
 from 26°C to 36°C over North mainland,
 from 28°C to 37°C over central mainland,
 from 25°C to 34°C over rest parts.

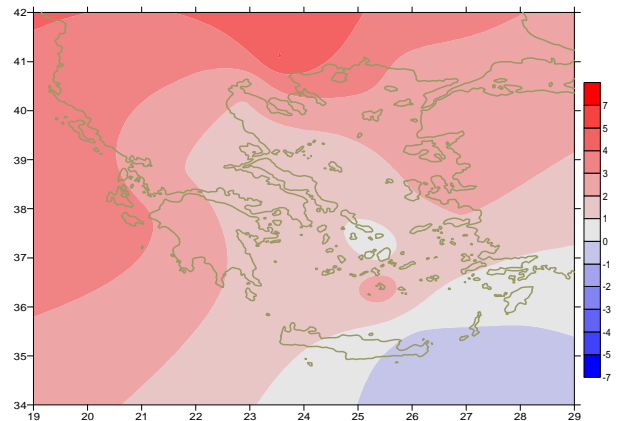


Deviation of mean temperature from normal values

Second Decameron

Minimum:
 More specific (varied) :
 from 14°C to 23°C over North mainland,
 from 17°C to 26°C over central mainland,
 from 20°C to 25°C over rest parts.

Maximum: More specific (varied) :
 from 29°C to 38°C over North mainland,
 from 31°C to 38°C over central mainland,
 from 26°C to 35°C over rest parts.



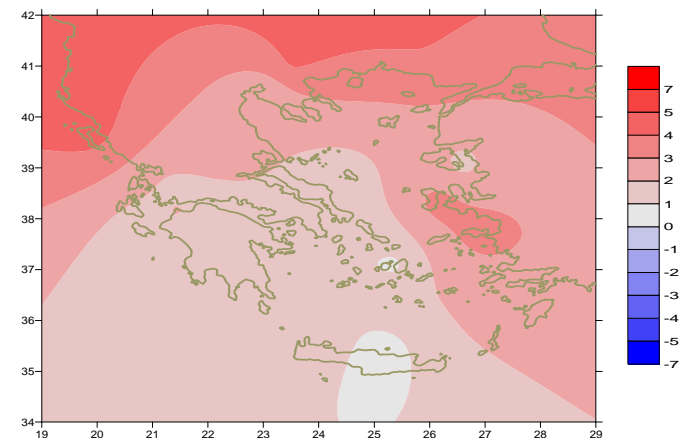
Deviation of maximum temperature from normal values

Third Decameron

Minimum: More specific (varied) :
 from 10°C to 22°C over North mainland,
 from 16°C to 24°C over central mainland,
 from 19°C to 26°C over rest parts.

Maximum: More specific (varied) :
 from 27°C to 36°C over North mainland,
 from 31°C to 40°C over central mainland,
 from 27°C to 40°C over rest parts.

*e.g: 40°C in Astros (28/8),
 39.8°C in Elefsina (28/8).*



Deviation of minimum temperature from normal values



P r e c i p i t a t i o n

First Decameron

Local thunderstorms recorded mainly over mountainous regions of Macedonia and Thrace.

More specific:

3mm in Konitsa (10/8).

Second Decameron

Isolated thunderstorms recorded over most parts of Northern mainland.

More specific:

7mm in Kastoria, 4mm in Edessa,

4mm in Kozani (17/8).

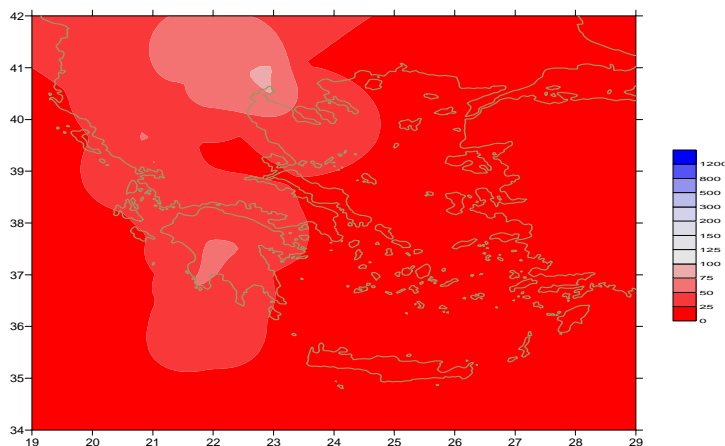
Third Decameron

Local thunderstorms recorded over mainland and central Aegean.

More specific:

8mm in Ioannina, 7mm in Thessaloniki at 24/8,

20mm in Skiathos, 6mm in Leonidio at 31/8.



*Deviation of monthly precipitation
height from normal values (%)*

TABLE OF MEAN VALUES

STATION	Longitude	Latitude	Tmean	TX	TN	RR	INST
SERRES	23,53	41,07	28,8	36,2	21,6	0	330
FLORINA	21,40	40,78					
KASTORIA	21,27	40,45	24,7	31,4	14,8	10	311
TRIKALA_IMATHIAS	22,55	40,60					
THESSALONIKI	22,97	40,52	28,7	33	20,3	14	335
CHRYSOUPOLI	24,62	40,92	26,9	32	19,9	0	355
ALEXANDROUPOLI	25,95	40,85	28,2	32,9	21	0	370
KOZANI	21,83	40,28	25,3	31,7	18,2	12	
KERKYRA	19,92	39,62	29,5	34,5	23	0	336
IOANNINA	20,82	39,70					
PREVEZA	20,76	38,91	28,3	33,3	22,4	0	
TRIKALA_THESSALIAS	21,77	39,52					
LARISA	22,45	39,65	28,5	34,3	19,3	0	341
LIMNOS	25,23	39,92	26,9	30,9	22,4	0	364
ARTA	21,00	39,17					
AGHIALOS	22,78	39,21	28	32,2	20,6	0	348
MYTILINI	26,60	39,05	28,1	32,6	22,8	0	365
VELO	22,77	37,97					
AGRINIO	21,35	38,60	28,6	35,4	19,1	0	365
LAMIA	22,43	38,87					
ANDRAVIDA	21,28	37,92	28,1	32,9	19,6	0	360
SKYROS	24,48	38,96	25,9	28,3	23	0	340
ARGOSTOLI	20,50	38,12	28,5	32,4	22,9	0	366
ARAXOS	21,42	38,15	29,5	34,1	21,4	2	360
TANAGRA	23,57	38,33					
HIOS	26,13	38,35	28	31,3	23,8	0	349
PYRGOS	21,42	37,67					
TRIPOLI	22,40	37,52					
TATOI	23,78	38,10					
HELLINIKO	23,73	37,90					
ELEVSINA	23,55	38,07	29,9	34	24,7	0	
ZAKYNTHOS	20,88	37,75	29,6	33,9	22,1	0	372
SAMOS	26,92	37,68	29,7	33,9	25,2	0	
ARGOS	22,75	37,63					
KALAMATA	22,02	37,07	27,7	33,6	19,6	5	347
NAXOS	25,37	37,10	25,1	26,7	22,5	0	379
METHONI	21,70	36,82					
MHLOS	24,43	36,73					
SPATA	23,95	37,95	28,5	31,6	23,2	0	
KOS	27,08	36,80	26,8	30,9	23,9	0	
KYTHIRA	22,98	36,15					
SANTORINI	25,41	36,41	27,2	30,6	23,4	0	366
SOUDA	24,12	35,55	26,8	31,1	22,1	0	380
RODOS	28,08	36,40	28,4	31	25,1	0	357
MYKONOS	25,35	37,43	25,7	27,8	23,2	0	
HERAKLEIO	25,18	35,33	26,5	28,9	22	0	353
IERAPETRA	25,73	35,02					
SITEIA	26,10	35,21	25,9	27,9	23,8	0	360
RETHYMNO	24,50	35,36					
TYMPAKI	24,76	35,06					
KASTELI	25,33	35,18	25	29,1	21	0	354
KARPATHOS	27,15	35,42	26,2	28,9	24,2	0	
PAROS	25,13	37,02					
SYROS	24,95	37,42	26,5	29,2	23,7	0	365
IKARIA	26,35	37,68	24,7	27,3	23,9	0	

**TABLE OF DEVIATIONS
FROM NORMAL VALUES**

STATION	TMEAN (deviation) (I)	PRECI (deviation %) (II)
SERRES	3.9	-
FLORINA		
THESSALONIKI	2.9	67
ALEXANDROUPOLI	3	-
KOZANI	1.9	39
KERKYRA	3.4	-
IOANNINA		
LARISA	3.5	-
LIMNOS	2.3	-
AGHIALOS	2.1	-
MYTILINI	2.2	-
AGRINIO	2	-
SKYROS	1.1	-
ARGOSTOLI	2.8	-
ARAXOS	2.9	33
HIOS	2.4	-
HELLINIKO		
ZAKYNTHOS	3	-
SAMOS	2	-
KALAMATA	1.5	48
NAXOS	0.7	-
METHONI		
SANTORINI	2.4	-
SOUDA	1	-
RODOS	1.5	-
HERAKLIO	0.6	-
SITIA	0.1	-

(I) deviation of mean temperature from normal values

(II) deviation of monthly precipitation height from normal values %.

Climatic Bulletin

General Description

Precipitation amounts were lower than normal values over most regions. The mean temperature varied quite higher than normal values mainly over western, northern parts of Greece but slightly lower over south Aegean area.

Climatic Parameters :

- ❖ **Normal Values** : normal values for various parameters (temperature, precipitation, etc) are defined as mean values calculated for 30 years. These normal values are used as basis and represent the mean situation. They can be specified in 10 daily, monthly, seasonally and yearly level and are used for the trend comparison of 10 days, month, season or year as: rainy decameron, mild winter, cool August etc.

Measurement :

- ❖ **Precipitation**
1 mm = 1 litre/m²

Table Legend :

Tmean : Mean Temperature
 TN : Minimum Temperature
 TX : Maximum Temperature
 RR : Precipitation height(mm)
 INST : Sun Duration (hours)

UTC hours (Universal Time Coordinates) in Greece :

- ❖ Winter : UTC hour = local hour - 2
- ❖ Summer : UTC hour = local hour - 3

© Hellenic National Meteorological Service
 Reproduction is prohibited without written authorization
 14 El.Venizelou 16777
 Helliniko, Athens
 Greece