



# Climatic Bulletin

February 2016

- Max temperature
- Min temperature
- Mean temperature
- Precipitation
- Sunshine duration

February was the warmest month of the last fifty years for every part of Greece.

Also this specific month was a dry one in general with the exception of few parts-Hepirus, central mainland, northeastern Aegean- where remarkable precipitation recorded in the middle of the period.



# Temperature

### First Decameron

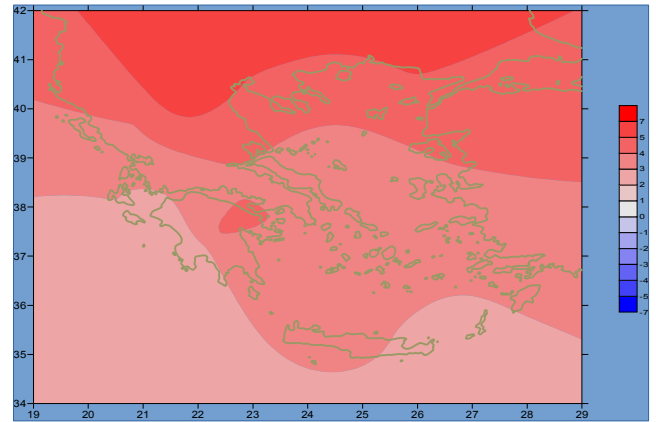
More specific (varied) :

**Minimum:**

from  $-6.6^{\circ}\text{C}$  to  $10^{\circ}\text{C}$  over north mainland,  
 from  $-5^{\circ}\text{C}$  to  $12^{\circ}\text{C}$  over central mainland,  
 from  $-3^{\circ}\text{C}$  to  $15^{\circ}\text{C}$  over rest parts.

**Maximum:**

from  $8^{\circ}\text{C}$  to  $22^{\circ}\text{C}$  over north mainland,  
 from  $9^{\circ}\text{C}$  to  $22^{\circ}\text{C}$  over central mainland,  
 from  $9^{\circ}\text{C}$  to  $21^{\circ}\text{C}$  over rest parts.



*Deviation of mean temperature from normal values*

### Second Decameron

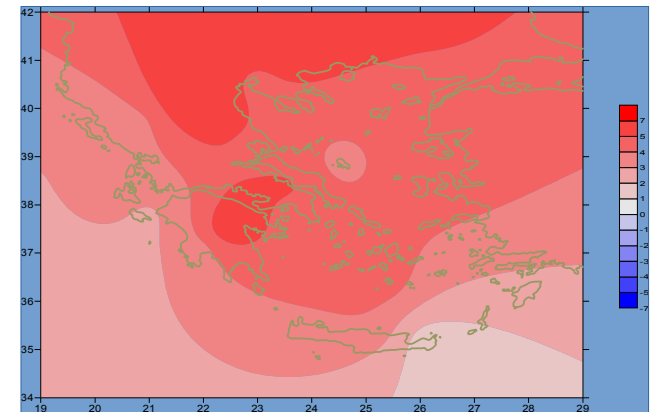
More specific (varied) :

**Minimum:**

from  $-1^{\circ}\text{C}$  to  $15^{\circ}\text{C}$  over north mainland,  
 from  $0^{\circ}\text{C}$  to  $16^{\circ}\text{C}$  over central mainland,  
 from  $3^{\circ}\text{C}$  to  $19^{\circ}\text{C}$  over rest parts.

**Maximum:**

from  $11^{\circ}\text{C}$  to  $23^{\circ}\text{C}$  over north mainland,  
 from  $16^{\circ}\text{C}$  to  $26^{\circ}\text{C}$  over central mainland,  
 from  $16^{\circ}\text{C}$  to  $28^{\circ}\text{C}$  over rest parts.



*Deviation of maximum temperature from normal values*

### Third Decameron

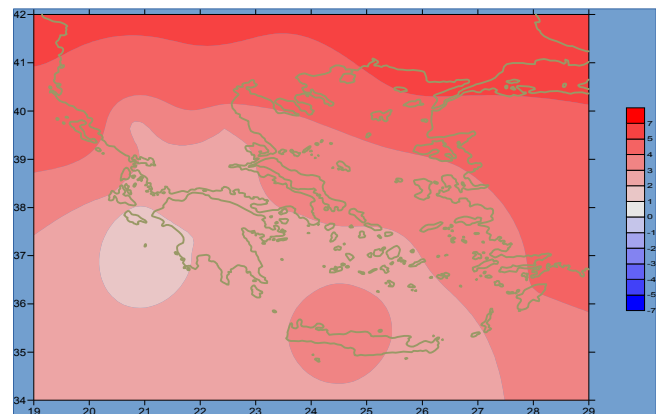
More specific (varied) :

**Minimum:**

from  $-1^{\circ}\text{C}$  to  $11^{\circ}\text{C}$  over north mainland,  
 from  $2^{\circ}\text{C}$  to  $12^{\circ}\text{C}$  over central mainland,  
 from  $6^{\circ}\text{C}$  to  $14^{\circ}\text{C}$  over rest parts.

**Maximum:**

from  $12^{\circ}\text{C}$  to  $25^{\circ}\text{C}$  over north mainland,  
 from  $14^{\circ}\text{C}$  to  $24^{\circ}\text{C}$  over central mainland,  
 from  $12^{\circ}\text{C}$  to  $22^{\circ}\text{C}$  over rest parts.



*Deviation of minimum temperature from normal values*



## P r e c i p i t a t i o n

### First Decameron

Remarkable precipitation over most parts mainly between 5-6/2.

More specific:

18mm in *Chrissoupoli*, 81mm in *Alexandroupoli*,  
 29mm in *Limnos*, 38mm in *Mitilini*, 27mm in *Skiros*,  
 21mm in *Karistos*, 35mm in *Chios*, 25mm in *Hellinikon*, 21mm in *Kithira*,  
 28mm in *Mikonos*, 38mm in *Paros*, 38mm in *Siros* at 5/2,  
 90mm in *Astros*, 17mm in *Elefsina*, 20mm in *Iraklion*, 23mm in *Kasteli*,  
 18mm in *Ikaria* at 6/2,  
 12mm in *Kerkira* at 9/2,  
 12mm in *Kos* at 10/2.

### Second Decameron

Remarkable precipitation in the middle of the period.

More specific:

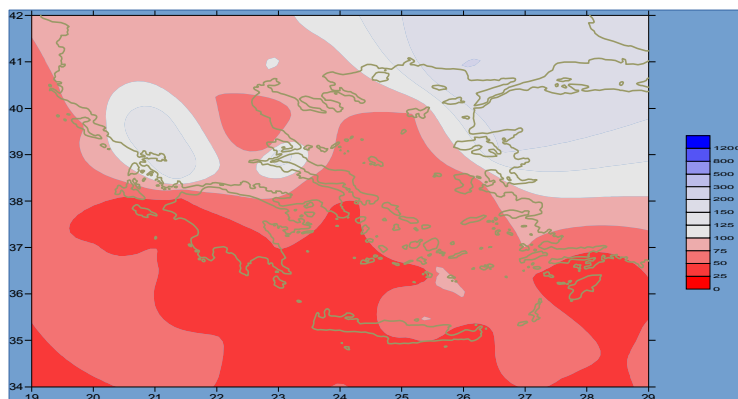
14mm in *Ioannina* at 11/2,  
 18mm in *Preveza*, 11mm in *Larisa*, 15mm in *Lamia* at 12/2,  
 16mm in *Konitsa*, 12mm in *Kastoria* at 13/2,  
 19mm in *Kerkira*, 22mm in *Alexandroupoli* at 14/2,  
 12mm in *Thessaloniki* at 20/2.

### Third Decameron

Local rainfalls over most parts.

More specific:

18mm in *Mikonos*, 36mm in *Siros*, 12mm in *Rodos*,  
 9mm in *Tanagra* at 21/2,  
 41mm in *Mitilini*, 7mm in *Alexandroupoli* at 25/2,  
 17mm in *Konitsa*, 13mm in *Ioannina* at 26/2,  
 12mm in *Edessa* at 29/2.



**Deviation of monthly precipitation  
 height from normal values (%)**

TABLE OF MEAN VALUES

STATION	Longitude	Latitude	Tmean	TX	TN	RR	INST
SERRES	23,53	41,07	11.4	16.4	6.2	36	110
FLORINA	21,40	40,78					
KASTORIA	21,27	40,45	8.8	15	2.1	27	128
TRIKALA_IMATHIAS	22,55	40,60					
THESSALONIKI	22,97	40,52	11.6	15.5	6.9	32	130
CHRYSOUPOLI	24,62	40,92	10.7	14.4	7	43	127
ALEXANDROUPOLI	25,95	40,85	10.9	14.5	7.3	132	127
KOZANI	21,83	40,28	9.5	14.5	4.1	20	
KERKYRA	19,92	39,62	14.1	17.3	10.5	91	119
IOANNINA	20,82	39,70	10.1	15.4	4	77	90
PREVEZA	20,76	38,91	13.9	17.4	9.7	68	
TRIKALA_THESSALIAS	21,77	39,52					
LARISA	22,45	39,65	11.2	17.3	4.5	12	136
LIMNOS	25,23	39,92	12.2	15.3	9.3	32	140
ARTA	21,00	39,17					
AGHIALOS	22,78	39,21	11.7	16.8	6.4	18	166
MYTILINI	26,60	39,05	13.9	17.4	11.1	103	160
VELO	22,77	37,97					
AGRINIO	21,35	38,60					
LAMIA	22,43	38,87					
ANDRAVIDA	21,28	37,92	13.3	17.8	8.5	38	161
SKYROS	24,48	38,96	13.6	16.3	11.2	31	145
ARGOSTOLI	20,50	38,12	14.7	17.9	11.6	39	148
ARAXOS	21,42	38,15	13.4	17.5	9.3	46	151
TANAGRA	23,57	38,33	12.1	17.8	6.9	31	159
HIOS	26,13	38,35	13.4	17.2	9.9	48	177
PYRGOS	21,42	37,67					
TRIPOLI	22,40	37,52	9.8	16.1	3.4	29	189
TATOI	23,78	38,10	11.6	17.2	6.6	37	
HELLINIKO	23,73	37,90	14.5	18.2	10.3	19	171
ELEYSINA	23,55	38,07	13.1	18.4	8	30	
ZAKYNTHOS	20,88	37,75	13.5	17.2	9.3	8	148
SAMOS	26,92	37,68					
ARGOS	22,75	37,63					
KALAMATA	22,02	37,07	13.3	19.3	7.9	21	181
NAXOS	25,37	37,10	15.3	18.6	12.1	37	177
METHONI	21,70	36,82					
MHLOS	24,43	36,73					
SPATA	23,95	37,95					
KOS	27,08	36,80	14.2	17	11.7	16	
KYTHIRA	22,98	36,15					
SANTORINI	25,41	36,41	15	18	12.1	4	186
SOUDA	24,12	35,55	14.5	18.7	11	27	191
RODOS	28,08	36,40	15.3	18	12.8	24	190
MYKONOS	25,35	37,43	14	16.6	12.2	46	
HRAKLEIO	25,18	35,33	15.6	19.1	12.3	36	190
IERAPETRA	25,73	35,02					
SITEIA	26,10	35,21	14.6	17	11.6	15	142
RETHYMNO	24,50	35,36					
TYMPAKI	24,76	35,06					
KASTEI	25,33	35,18	12.6	17.4	7.9	59	198
KARPATOS	27,15	35,42	15.4	17.6	13.4	16	
PAROS	25,13	37,02	14.6	17.6	11.8	53	190
SYROS	24,95	37,42	14.3	17.5	11.8	70	197
IKARIA	26,35	37,68					

**TABLE OF DEVIATIONS  
FROM NORMAL VALUES**

STATION	TMEAN ( deviation ) (I)	PRECI ( deviation % ) (II)
SERRES	5.1	85
FLORINA		
THESSALONIKI	4.9	80
ALEXANDROUPOLI	5.1	216
KOZANI	5.9	63
KERKYRA	3.8	67
IOANNINA	4	67
LARISA	4.4	35
LIMNOS	4.3	73
AGHIALOS	4.1	35
MYTILINI	4.1	106
AGRINIO		
SKYROS	3.4	49
ARGOSTOLI	3	35
ARAXOS	2.9	54
HIOS	3.6	58
HELLINIKO	4	40
ZAKYNTHOS	2	7
SAMOS		
KALAMATA	2.6	21
NAXOS	3.2	63
METHONI		
SANTORINI	3.8	7
SOUDA	3.4	24
RODOS	3.3	21
HERAKLIO	3.4	47
SITIA	2.2	20

(I) deviation of mean temperature from normal values

(II) deviation of monthly precipitation height from normal values %.

# Climatic Bulletin

## General Description

Precipitation amounts varied lower than normals over most parts, with the exception of Epirus and northeastern Aegean area.  
The mean temperature was very higher than normal values everywhere.

### Measurement :

### Climatic Parameters :

**Normal Values :** normal values for various parameters (temperature, precipitation, etc) are defined as mean values calculated for 30 years. These normal values are used as basis and represent the mean situation. They can be specified in 10 daily, monthly, seasonally and yearly level and are used for the trend comparison of 10 days, month, season or year as: rainy decameron, mild winter, cool August etc.

### Precipitation

1 mm = 1 litre/m<sup>2</sup>

### Table Legend :

Tmean : Mean Temperature  
TN : Minimum Temperature  
TX : Maximum Temperature  
RR : Precipitation height(mm)  
INST : Sun Duration (hours)

### UTC hours (Universal Time Coordinates) in Greece :

Winter : UTC hour = local hour - 2  
Summer : UTC hour = local hour - 3

© Hellenic National Meteorological Service  
Reproduction is prohibited without written authorization  
14 El.Venizelou 16777  
Helliniko, Athens  
Greece



Climatological Division  
M. Michelaraki  
meteorologist

Website : [www.hnms.gr](http://www.hnms.gr)

