




# Climatic Bulletin

June 2016

 **Max  
temperature**

 **Min  
temperature**

 **Mean  
temperature**

 **Precipitation**

 **Sunshine  
duration**

In June the short periods of bad weather alternated with long sunny ones.

Specifically strong rainfalls and thunderstorms temporarily affected the Greek mainland and the Ionian area. Because of the heavy precipitation local floods occurred, while a couple of days(25-26/6) severe flood episode recorded in Arcadia area (namely Tripoli and Megalopoli).



ΕΘΝΙΚΗ  
**ΜΕΤΕΩΡΟΛΟΓΙΚΗ**  
ΥΠΗΡΕΣΙΑ

HELLENIC NATIONAL METEOROLOGICAL SERVICE



# Temperature

### First Decameron

More specific (varied) :

**Minimum:**

from 7°C to 19°C over north mainland,  
from 10°C to 20°C over central mainland,  
from 10°C to 23°C over rest parts.

**Maximum:**

from 23°C to 33°C over north mainland,  
from 20°C to 34°C over central mainland,  
from 19°C to 35°C over rest parts.

### Second Decameron

More specific (varied) :

**Minimum:**

from 8°C to 23°C over north mainland,  
from 11°C to 21°C over central mainland,  
from 12°C to 23°C over rest parts.

**Maximum:**

from 21°C to 38°C over north mainland,  
from 22°C to 41°C over central mainland,  
from 20°C to 40°C over rest parts.

### Third Decameron

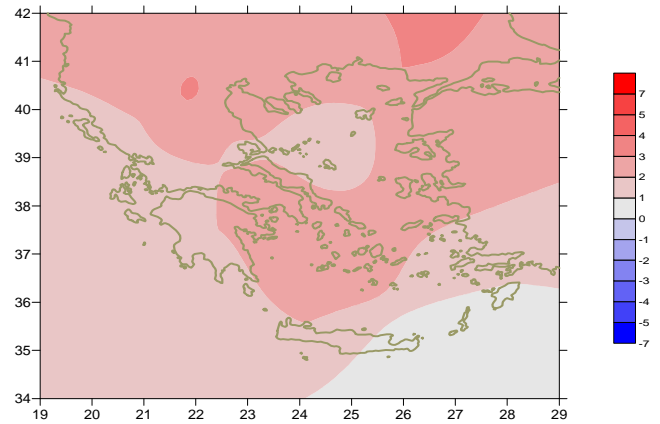
More specific (varied) :

**Minimum:**

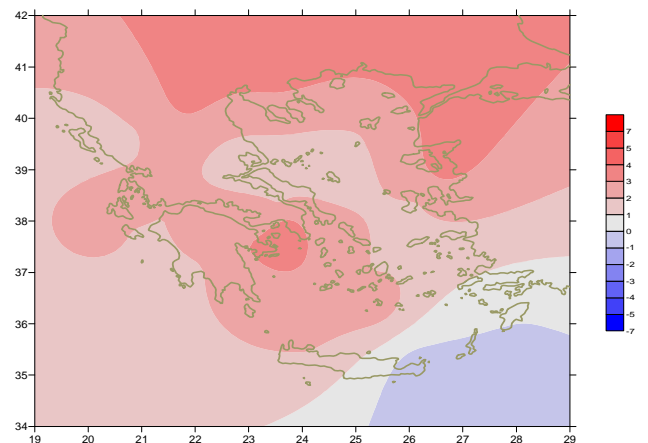
from 13°C to 27°C over north mainland,  
from 15°C to 27°C over central mainland,  
from 18°C to 25°C over rest parts.

**Maximum:**

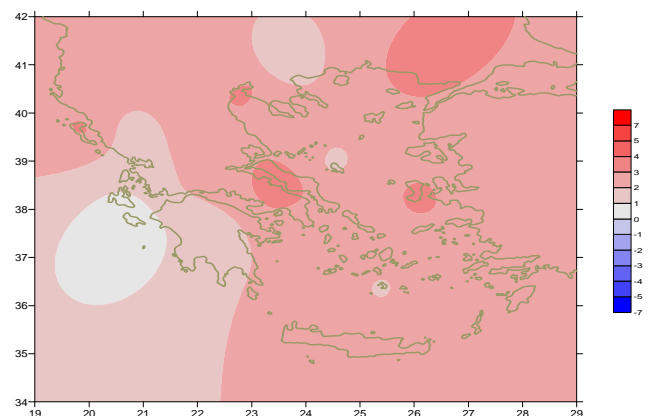
from 25°C to 39°C over north mainland,  
from 20°C to 40°C over central mainland,  
from 24°C to 39°C over rest parts.



*Deviation of mean temperature from normal values*



*Deviation of maximum temperature from normal values*



*Deviation of minimum temperature from normal values*



## P r e c i p i t a t i o n

### First Decameron

Remarkable rainfalls , thunderstorms mainly over mainland.

More specific:

*9mm in Kastoria (5/6),*

*6mm in Serres (6/6), 20mm in Alexandroupoli (6/6),*

*10mm in Tatoi(7/6), 20mm in Elefsina (7/6),*

*9mm in Aghialos (8/6), 22mm in Lamia (8/6), 10mm in Kalamata (8/6),*

*5mm in Methoni (10/6).*

### Second Decameron

Local heavy precipitation in the middle of the period.

More specific:

*14mm in Kastoria, 20mm in Kerkyra ,*

*17mm in Ioannina, 14mm in Preveza at 13/6,*

*20mm in Kerkyra, 13mm in Mitilini, 5mm in Chios at 14/6.*

### Third Decameron

Locally strong rainfalls and thunderstorms over Peloponese,  
south Ionion between 25-26/6 and over eastern Thessaly-Sterea at 28/6.

More specific:

*80mm in Tripoli, 64mm in Kalamata, 18mm in Argostoli,*

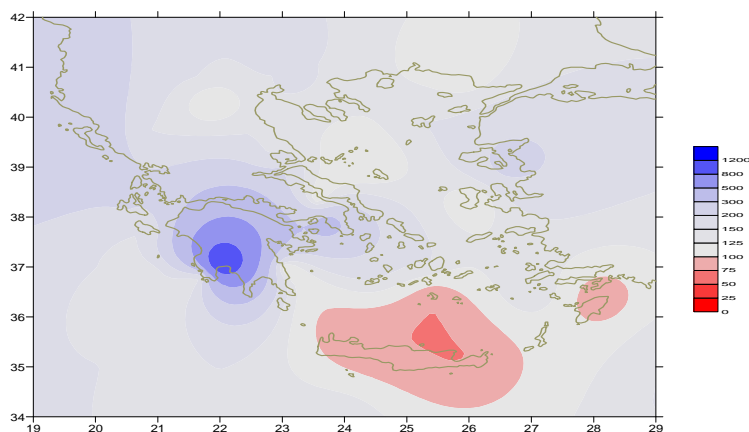
*41mm in Kilini, 38mm in Andravida at 25/6,*

*68mm in Tripoli, 15mm in Araxos, 13mm in Argostoli at 26/6,*

*12mm in Serres, 31mm in Lamia, 14mm in Tatoi,*

*18mm in Hellinikon, 21mm in Spata, 15mm in Kotroni, 10mm in Rafina,*

*12mm in OAKA at 28/6.*



*Deviation of monthly precipitation  
height from normal values (%)*

TABLE OF MEAN VALUES

STATION	Longitude	Latitude	Tmean	TX	TN	RR	INST
SERRES	23,53	41,07	26,5	33,3	17,6	36	318
FLORINA	21,40	40,78					
KASTORIA	21,27	40,45	22,3	28,7	12,5	35	274
TRIKALA_IMATHIAS	22,55	40,60					
THESSALONIKI	22,97	40,52	26,8	31,2	19,1	10	331
CHRYSOUPOLI	24,62	40,92	25,5	29,4	19,1	16	318
ALEXANDROUPOLI	25,95	40,85	26	30,4	18,3	14	322
KOZANI	21,83	40,28	24,4	29,5	15,7	17	
KERKYRA	19,92	39,62	25,5	29,4	19,5	40	322
IOANNINA	20,82	39,70	23,6	29,5	14,2	40	273
PREVEZA	20,76	38,91	24,7	28,5	19,1	28	
TRIKALA_THESSALIAS	21,77	39,52					
LARISA	22,45	39,65	27,3	33,1	17,8	10	305
LIMNOS	25,23	39,92	25,2	28,9	19,2	4	360
ARTA	21,00	39,17					
AGHIALOS	22,78	39,21	26,3	30,4	18,9	22	313
MYTILINI	26,60	39,05	27,3	31,8	21,3	14	375
VELO	22,77	37,97					
AGRINIO	21,35	38,60					
LAMIA	22,43	38,87					
ANDRAVIDA	21,28	37,92	25	29,5	17,8	52	323
SKYROS	24,48	38,96	25,1	27,5	21,1	2	234
ARGOSTOLI	20,50	38,12	25	28,9	19,1	31	331
ARAXOS	21,42	38,15	25,6	30,2	18,2	24	283
TANAGRA	23,57	38,33	27,5	32	19,3	3	319
HIOS	26,13	38,35	26,2	29,6	20,5	5	354
PYRGOS	21,42	37,67					
TRIPOLI	22,40	37,52	23,9	30,6	13,3	163	323
TATOI	23,78	38,10	26,7	31,2	18,6	25	
HELLINIKO	23,73	37,90	27,7	31,9	22,6	22	304
ELEYSINA	23,55	38,07	28,4	33	21,7	26	
ZAKYNTHOS	20,88	37,75	25,7	29,7	18,3	5	330
SAMOS	26,92	37,68					
ARGOS	22,75	37,63					
KALAMATA	22,02	37,07	25,4	30,6	17,5	80	319
NAXOS	25,37	37,10	25,5	27,6	21,6	0	376
METHONI	21,70	36,82					
MHLOS	24,43	36,73					
SPATA	23,95	37,95	25	30,6	19,3	78	
KOS	27,08	36,80	25,1	29,2	21,2	0	
KYTHIRA	22,98	36,15					
SANTORINI	25,41	36,41	25,9	29,5	21,5	0	323
SOUDA	24,12	35,55	26,4	30,8	21,3	0	348
RODOS	28,08	36,40	25,7	28,6	22,2	0	369
MYKONOS	25,35	37,43	25,4	28,4	21,9	0	0
HRAKLEIO	25,18	35,33	25,6	28,2	21,1	4	353
IERAPETRA	25,73	35,02					
SITEIA	26,10	35,21	24,5	26,9	22	0	290
RETHYMNO	24,50	35,36					
TYMPAKI	24,76	35,06					
KASTELI	25,33	35,18	25,2	30	18,9	0	324
KARPATOS	27,15	35,42	25,1	28,4	21,8	0	
PAROS	25,13	37,02	25,9	30,2	21,4	0	344
SYROS	24,95	37,42	25,9	29,5	21,7	0	361
IKARIA	26,35	37,68					

**TABLE OF DEVIATIONS  
FROM NORMAL VALUES**

STATION	TMEAN ( deviation ) (I)	PRECI ( deviation % ) (II)
SERRES	2.6	82
FLORINA		
THESSALONIKI	2.6	32
ALEXANDROUPOLI	3	51
KOZANI	3.1	44
KERKYRA	1.7	280
IOANNINA	1.9	86
LARISA	2.4	43
LIMNOS	1.9	18
AGHIALOS	1.9	104
MYTILINI	2.7	233
AGRINIO		
SKYROS	1.4	39
ARGOSTOLI	1.8	148
ARAXOS	1.6	267
HIOS	2.3	33
HELLINIKO	2.7	367
ZAKYNTHOS	1.6	69
SAMOS		
KALAMATA	1.3	1,230
NAXOS	2.3	0.5
METHONI		
SANTORINI	2.5	0.3
SOUDA	2	0.2
RODOS	1	0.3
HERAKLIO	1.3	125
SITIA	0.1	0

(I) deviation of mean temperature from normal values  
(II) deviation of monthly precipitation height from normal values %.

# Climatic Bulletin

## General Description

Precipitation amounts varied higher than normals over mainland and Ionian area.  
The mean temperature was higher enough than normal values almost everywhere.

### Climatic Parameters :

- ❖ **Normal Values** : normal values for various parameters (temperature, precipitation, etc) are defined as mean values calculated for 30 years. These normal values are used as basis and represent the mean situation. They can be specified in 10 daily, monthly, seasonally and yearly level and are used for the trend comparison of 10 days, month, season or year as: rainy decameron, mild winter, cool August etc.

### Measurement :

- ❖ **Precipitation**  
1 mm = 1 litre/m<sup>2</sup>

### Table Legend :

Tmean : Mean Temperature  
TN : Minimum Temperature  
TX : Maximum Temperature  
RR : Precipitation height(mm)  
INST : Sun Duration (hours)

### UTC hours (Universal Time Coordinates) in Greece :

- ❖ Winter : UTC hour = local hour - 2
- ❖ Summer : UTC hour = local hour - 3

© Hellenic National Meteorological Service  
Reproduction is prohibited without written authorization  
14 El.Venizelou 16777  
Helliniko, Athens  
Greece