




# Climatic Bulletin

May 2017

 **Max  
temperature**

 **Min  
temperature**

 **Mean  
temperature**

 **Precipitation**

 **Sunshine  
duration**

May started with warm weather while significant rainfalls, thunderstorms recorded mainly over east-southern parts from the middle of the month till the end. Also remarkable snowfalls marked over mountainous areas of central mainland.



ΕΘΝΙΚΗ  
**ΜΕΤΕΩΡΟΛΟΓΙΚΗ**  
ΥΠΗΡΕΣΙΑ  
HELLENIC NATIONAL METEOROLOGICAL SERVICE



# Temperature

### First 10-day period

More specific (varied) :

**Minimum:**

from 4°C to 16°C over north mainland,  
 from 7°C to 18°C over central mainland,  
 from 7°C to 20°C over rest parts.

**Maximum:**

from 18°C to 31°C over north mainland,  
 from 18°C to 32°C over central mainland,  
 from 21°C to 32°C over rest parts.

### Second 10-day period

More specific (varied) :

**Minimum:**

from 2°C to 17°C over north mainland,  
 from 5°C to 23°C over central mainland,  
 from 10°C to 22°C over rest parts.

**Maximum:**

from 14°C to 32°C over north mainland,  
 from 15°C to 39°C over central mainland,  
 from 17°C to 33°C over rest parts.

### Third 10-day period

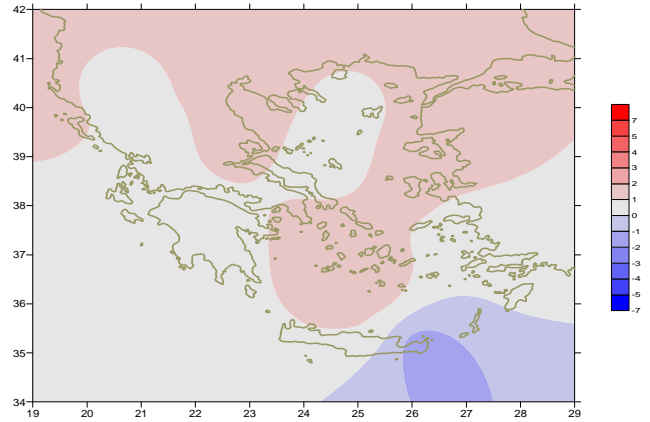
More specific (varied) :

**Minimum:**

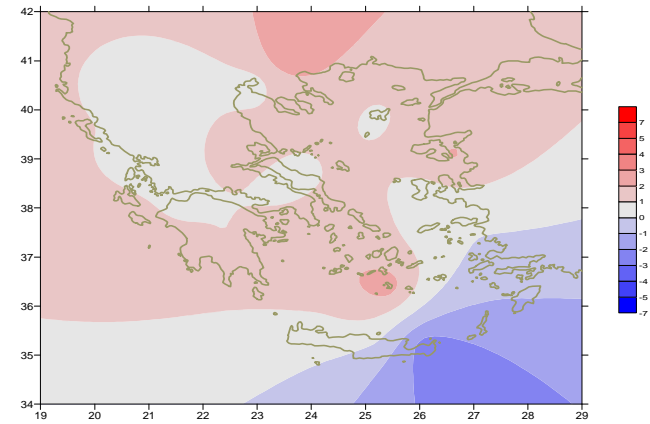
from 6°C to 16°C over north mainland,  
 From 9°C to 18°C over central mainland,  
 from 13°C to 20°C over rest parts.

**Maximum:**

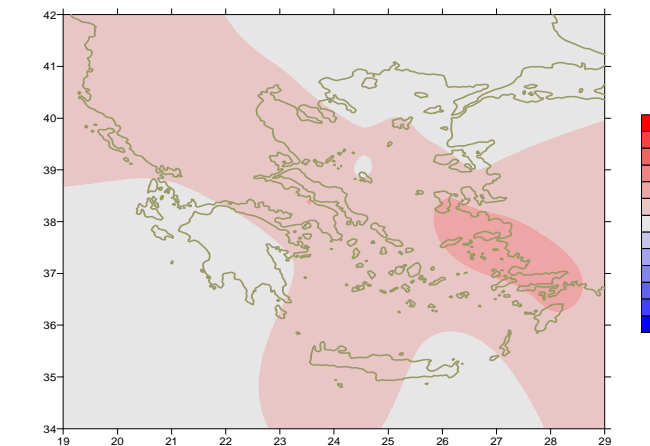
from 17°C to 30°C over north mainland,  
 from 19°C to 30°C over central mainland,  
 From 19°C to 31°C over rest parts.



*Deviation of mean temperature from normal values*



*Deviation of maximum temperature from normal values*



*Deviation of minimum temperature from normal values*



## P r e c i p i t a t i o n

### First 10-day period

Remarkable precipitation temporarily over central and north mainland.

More specific:

3mm in Konitsa (1/5),  
6mm in Alexandroupoli, 5mm in Chrisoupoli (6/5),  
7mm in Serres, 4mm in Kastoria, 8mm in Larisa,  
4mm in Aghialos (9/5),  
3mm in Alexandroupoli, 3mm in Thessaloniki,  
3mm in Mitilini (10/5).

### Second 10-day period

Significant local precipitation.

More specific:

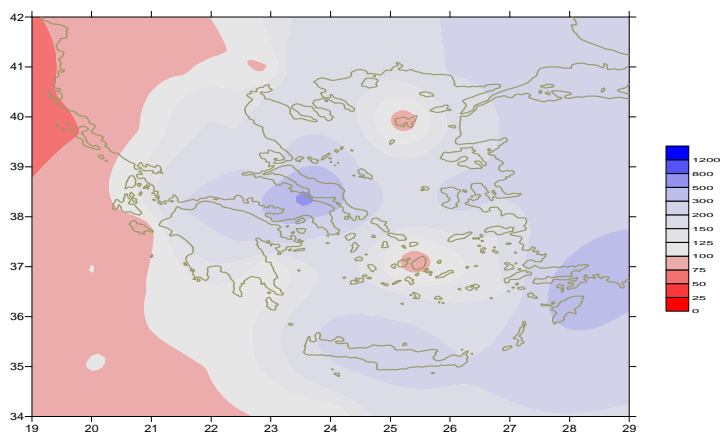
14mm in Kastoria, 18mm in Edessa, 25mm in Kozani,  
28mm in Araxos (16/5),  
15mm in Skyros, 10mm in Tripoli, 7mm in Karistos,  
24mm in Tanagra, 8mm in Zakynthos, 8mm in Kalamata,  
11mm in Souda (17/5),  
27mm in Tatoi, 29mm in Spata, 12mm in Helliniko (18/5),  
39mm in Rodos, 36mm in Kasteli, 7mm in Iraklion (19/5).

### Third 10-day period

Significant local precipitation.

More specific:

14mm in Konitsa, 16mm in Ioannina (21/5),  
20mm in Tanagra, 16mm in Mikonos (22/5),  
21mm in Tripoli (24/5),  
28mm in Serres, 20mm in Larisa (25/5),  
20mm in Thessaloniki, 24mm in Chrissoupoli (26/5),  
26mm in Alexandroupoli, 44mm in Karistos,  
17mm in Chios, 16mm in Samos (27/5),  
61mm in Karistos, 30mm in Tanagra, 17mm in Aghialos,  
14mm in Elefsina (28/5), 11mm in Iraklion (29/5).  
16mm in Karpathos (30/5).



*Deviation of monthly precipitation  
height from normal values (%)*

TABLE OF MEAN VALUES

STATION	Longitude	Latitude	Tmean	TX	TN	RR	INST
SERRES	23,53	41,07	20,6	27,8	12,9	74	237
FLORINA	21,40	40,78					
KASTORIA	21,27	40,45	16,8	23,2	8,5	72	235
TRIKALA_IMATHIAS	22,55	40,60					
THESSALONIKI	22,97	40,52	20,7	25,1	13,3	52	263
CHRYSOUPOLI	24,62	40,92	19,5	23,4	13,3	35	250
ALEXANDROUPOLI	25,95	40,85	19,4	23,9	11,2	51	276
KOZANI	21,83	40,28	17,9	22,2	10,5	82	
KERKYRA	19,92	39,62	20,7	24,9	14,7	9	283
IOANNINA	20,82	39,70	17,8	23,4	11,3	61	230
PREVEZA	20,76	38,91	20	23,6	14,6	13	
TRIKALA_THESSALIAS	21,77	39,52					
LARISA	22,45	39,65	20,8	27	12	49	248
LIMNOS	25,23	39,92	19,3	22,7	13,9	7	289
ARTA	21,00	39,17					
AGHIALOS	22,78	39,21	20,8	25,8	13,5	66	270
MYTILINI	26,60	39,05	21,7	26	16,1	31	306
VELO	22,77	37,97					
AGRINIO	21,35	38,60					
LAMIA	22,43	38,87					
ANDRAVIDA	21,28	37,92	20,5	24,7	13,8	6	303
SKYROS	24,48	38,96					
ARGOSTOLI	20,50	38,12	20,3	23,7	15	18	314
ARAXOS	21,42	38,15	20,6	24,8	13,8	33	308
TANAGRA	23,57	38,33	20,9	25,3	13,2	122	261
HIOS	26,13	38,35	20,8	23,6	15,5	27	286
PYRGOS	21,42	37,67					
TRIPOLI	22,40	37,52	17,7	23,7	8,8	65	265
TATOI	23,78	38,10	20,4	24,6	12,8	60	
HELLINIKO	23,73	37,90	21,7	25,8	16,9	35	260
ELEYSINA	23,55	38,07	22,2	26,3	15,9	33	
ZAKYNTHOS	20,88	37,75	20,7	24,8	14,8	12	
SAMOS	26,92	37,68	21,1	24,6	16,4	23	
ARGOS	22,75	37,63					
KALAMATA	22,02	37,07	20,3	25,7	12,6	26	293
NAXOS	25,37	37,10	20,5	23,2	17	7	316
METHONI	21,70	36,82					
MHLOS	24,43	36,73					
SPATA	23,95	37,95	19,6	24,6	14,2	49	
KOS	27,08	36,80					
KYTHIRA	22,98	36,15					
SANTORINI	25,41	36,41	21,2	24,7	17,2	7	288
SOUDA	24,12	35,55	21	25	16,4	31	315
RODOS	28,08	36,40	21	23,5	17,9	58	307
MYKONOS	25,35	37,43	20,2	23,1	17,1	22	
HRAKLEIO	25,18	35,33	21	23,7	16,2	37	297
IERAPETRA	25,73	35,02					
SITEIA	26,10	35,21	18,8	21,3	15,6	24	310
RETHYMNO	24,50	35,36					
TYMPAKI	24,76	35,06					
KASTELI	25,33	35,18	19,7	24,3	14,1	66	264
KARPATIOS	27,15	35,42	21	24	18,8	24	
PAROS	25,13	37,02					
SYROS	24,95	37,42					
IKARIA	26,35	37,68					

**TABLE OF DEVIATIONS  
FROM NORMAL VALUES**

STATION	TMEAN	PRECI
	( deviation)	(deviation % )
	(I)	(II)
SERRES	1.1	152
FLORINA		
THESSALONIKI	1.2	118
ALEXANDROUPOLI	1.1	141
KOZANI	1.1	143
KERKYRA	1.1	25
IOANNINA	0.4	91
LARISA	1.2	132
LIMNOS	0.9	30
AGHIALOS	1.3	177
MYTILINI	1.5	146
AGRINIO		
SKYROS	0.7	198
ARGOSTOLI	0.8	95
ARAXOS	0.8	177
HIOS	1.3	231
HELLINIKO	1.1	243
ZAKYNTHOS	0.9	71
SAMOS	0.6	148
KALAMATA	0.5	114
NAXOS	1.1	71
METHONI		
SANTORINI	2	117
SOUDA	1	239
RODOS	0.5	414
HERAKLIO	0.7	243
SITIA	-1.6	185

(I) deviation of mean temperature from normal values

(II) deviation of monthly precipitation height from normal values %.

# Climatic Bulletin

## General Description

Precipitation amounts were higher enough than normals over most parts with exception of northwest parts. The mean temperature varied higher than normal values almost everywhere.

### Climatic Parameters :

- ❖ **Normal Values** : normal values for various parameters (temperature, precipitation, etc) are defined as mean values calculated for 30 years. These normal values are used as basis and represent the mean situation. They can be specified in 10 daily, monthly, seasonally and yearly level and are used for the trend comparison of 10 days, month, season or year as: rainy decameron, mild winter, cool August etc.

### Measurement :

- ❖ **Precipitation**  
1 mm = 1 litre/m<sup>2</sup>

### Table Legend :

Tmean : Mean Temperature  
 TN : Minimum Temperature  
 TX : Maximum Temperature  
 RR : Precipitation height(mm)  
 INST : Sun Duration (hours)

### UTC hours (Universal Time Coordinates) in Greece :

- ❖ Winter : UTC hour = local hour - 2
- ❖ Summer : UTC hour = local hour - 3

© Hellenic National Meteorological Service  
 Reproduction is prohibited without written authorization  
 14 El.Venizelou 16777  
 Helliniko, Athens  
 Greece