




# Climatic Bulletin

July 2017

 **Max  
temperature**

 **Min  
temperature**

 **Mean  
temperature**

 **Precipitation**

 **Sunshine  
duration**

July started with an episode of very high but not extreme temperatures (1-2 /7).

Afterwards the values of T declined temporarily to rise again between 11-13/7 without exceeding 40 degrees of Celsius.

In the middle of the month very strong rainfalls and thunderstorms recorded while due to the rapid drop in the temperature a few slopes of mountain Olympos covered by snow.



ΕΘΝΙΚΗ  
**ΜΕΤΕΩΡΟΛΟΓΙΚΗ**  
ΥΠΗΡΕΣΙΑ

HELLENIC NATIONAL METEOROLOGICAL SERVICE



# Temperature

### First 10-day period

More specific (varied) :

**Minimum:**

from 14°C to 22°C over north mainland,  
 from 15°C to 31°C over central mainland,  
 from 14°C to 30°C over rest parts.

**Maximum:**

from 27°C to 42°C over north mainland,  
 from 30°C to 44.7°C over central mainland,  
 from 26°C to 41°C over rest parts.

### Second 10-day period

More specific (varied) :

**Minimum:**

from 13°C to 22°C over north mainland,  
 from 14°C to 28°C over central mainland,  
 from 17°C to 26°C over rest parts.

**Maximum:**

from 27°C to 40°C over north mainland,  
 from 27°C to 40°C over central mainland,  
 from 25°C to 38°C over rest parts.

### Third 10-day period

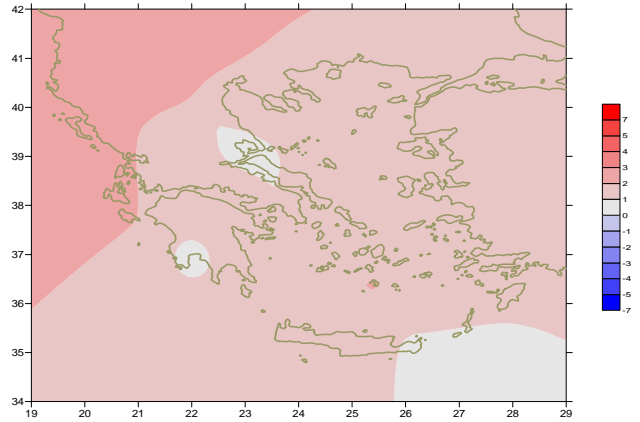
More specific (varied) :

**Minimum:**

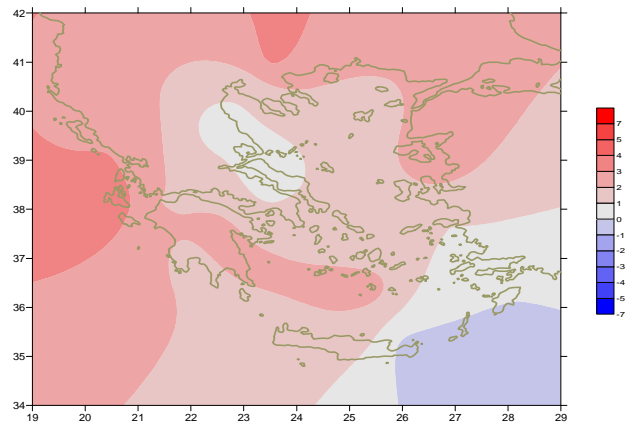
from 12°C to 22°C over north mainland,  
 From 16°C to 23°C over central mainland,  
 from 18°C to 25°C over rest parts.

**Maximum:**

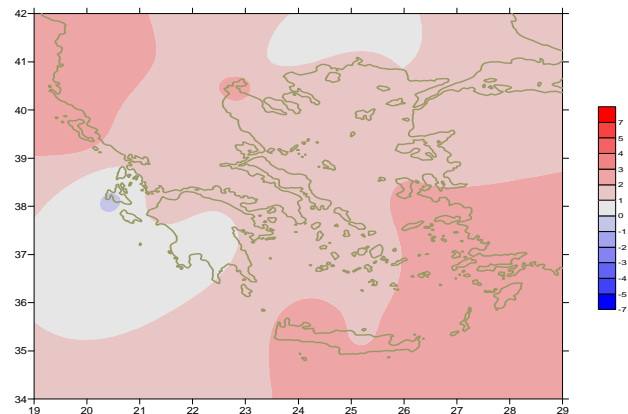
from 29°C to 37°C over north mainland,  
 from 31°C to 38°C over central mainland,  
 From 27°C to 37°C over rest parts.



*Deviation of mean temperature from normal values*



*Deviation of maximum temperature from normal values*



*Deviation of minimum temperature from normal values*



## Precipitation

### First 10-day period

Few local precipitation over mainland.

More specific:

*5mm in Konitsa (6/7),  
3mm in Kastoria, 7mm in Kozani,  
24mm in Larisa (10/7).*

### Second 10-day period

Significant precipitation over most parts from the middle of the period.

More specific:

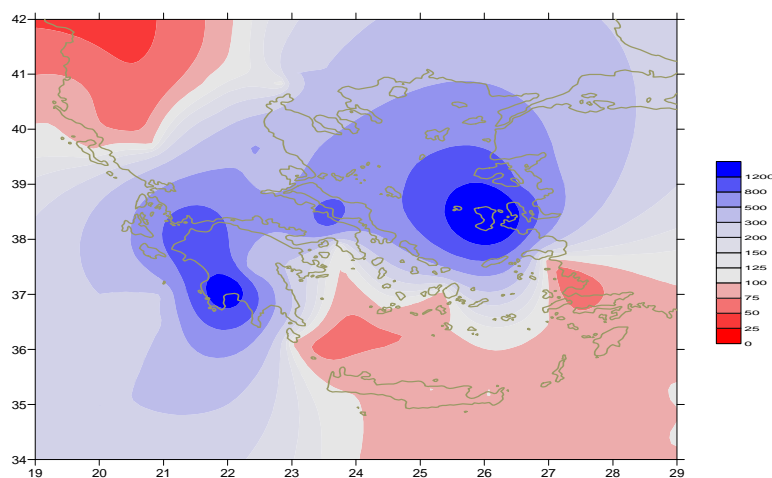
*18mm in Serres, 12mm in Chrisoupoli (15/7),  
27mm in Kozani, 31mm in Edessa, 34mm in Araxos, 50mm in Larisa (16/7),  
52mm in Thessaloniki, 62mm in Limnos, 35mm in Astros, 51mm in Aghialos,  
45mm in Adravida, 36mm in Skyros, 68mm in Tanagra, 37mm in Tripoli,  
14mm in Zakynthos, 53mm in Kalamata (17/7).*

### Third 10-day period

Significant precipitation only on 27/7.

More specific:

*21mm in Chrissoupoli, 30mm in Adravida, 23mm in Alexandroupoli,  
65mm in Argostoli, 12mm in Elefsina, 21mm in Zakynthos (27/7).*



*Deviation of monthly precipitation height from normal values (%)*

TABLE OF MEAN VALUES

STATION	Longitude	Latitude	Tmean	TX	TN	RR	INST
SERRES	23,53	41,07	28	35,2	19,2	65	356
FLORINA	21,40	40,78					
KASTORIA	21,27	40,45	25,4	31,8	15,3	43	331
TRIKALA_IMATHIAS	22,55	40,60					
THESSALONIKI	22,97	40,52	28,3	32,7	20,6	78	354
CHRYSOUPOLI	24,62	40,92	26,5	30,4	19,9	44	336
ALEXANDROUPOLI	25,95	40,85	27,4	32,2	18,4	27	370
KOZANI	21,83	40,28	26,2	30,8	17,3	49	
KERKYRA	19,92	39,62	28,9	33,6	21,3	99999	379
IOANNINA	20,82	39,70	26,9	33,9	16,3	20	355
PREVEZA	20,76	38,91	26,7	31,1	20,2	13	
TRIKALA_THESSALIAS	21,77	39,52					
LARISA	22,45	39,65	28,1	33,6	19,3	107	336
LIMNOS	25,23	39,92	26,6	30,3	21,2	70	361
ARTA	21,00	39,17					
AGHIALOS	22,78	39,21	27,6	31,9	20	56	347
MYTILINI	26,60	39,05	28,4	33	22,8	16	408
VELO	22,77	37,97					
AGRINIO	21,35	38,60					
LAMIA	22,43	38,87					
ANDRAVIDA	21,28	37,92	27,4	31,9	19,4	86	383
SKYROS	24,48	38,96	26,5	28,8	22,8	41	350
ARGOSTOLI	20,50	38,12	27,9	32,3	20,3	74	390
ARAXOS	21,42	38,15	28,2	33,1	20,1	49	360
TANAGRA	23,57	38,33	28,3	32,5	19,5	68	375
HIOS	26,13	38,35	28	31,7	23,1	2	363
PYRGOS	21,42	37,67					
TRIPOLI	22,40	37,52	26	32,6	15	40	360
TATOI	23,78	38,10	28,4	32,5	21,6	2	
HELLINIKO	23,73	37,90	29,5	33,3	24,3	4	378
ELEYSINA	23,55	38,07	30,5	34,4	24	4	
ZAKYNTHOS	20,88	37,75	28,8	33,5	21,2	34	400
SAMOS	26,92	37,68	29,7	33,5	24,7	0	
ARGOS	22,75	37,63					
KALAMATA	22,02	37,07	27,2	32,9	18,8	59	373
NAXOS	25,37	37,10	26	28,1	23,3	0	399
METHONI	21,70	36,82					
MHLOS	24,43	36,73					
SPATA	23,95	37,95	29,1	32,3	21,7		
KOS	27,08	36,80	27,5	31,6	23,6	0	
KYTHIRA	22,98	36,15					
SANTORINI	25,41	36,41	27,5	30,8	23,6	0	365
SOUDA	24,12	35,55	28,1	32,1	23	1	356
RODOS	28,08	36,40	28	30,6	24,9	0	396
MYKONOS	25,35	37,43	26,6	29,5	23,4	0	
HRAKLEIO	25,18	35,33	27,5	30	23,6	9999	376
IERAPETRA	25,73	35,02					
SITEIA	26,10	35,21	26,9	28,2	24,5	0	324
RETHYMNO	24,50	35,36					
TYMPAKI	24,76	35,06					
KASTEELI	25,33	35,18	25,9	29,8	21,4	1	337
KARPATOS	27,15	35,42	26,4	29,4	24,4	0	
PAROS	25,13	37,02	26,8	29,8	25,6	0	381
SYROS	24,95	37,42					
IKARIA	26,35	37,68					

**TABLE OF DEVIATIONS  
FROM NORMAL VALUES**

STATION	TMEAN ( deviation ) (I)	PRECI ( deviation % ) (II)
SERRES	1.9	208
FLORINA		
THESSALONIKI	1.8	305
ALEXANDROUPOLI	1.8	153
KOZANI	2.2	126
KERKYRA	2.5	1
IOANNINA	2.1	70
LARISA	1	527
LIMNOS	1.1	680
AGHIALOS	0.9	315
MYTILINI	2	696
AGRINIO		
SKYROS	1.2	695
ARGOSTOLI	2.4	481
ARAXOS	1.6	1140
HIOS	1.6	2000
HELLINIKO	1.7	71
ZAKYNTHOS	2.1	680
SAMOS	1.3	-
KALAMATA	0.7	1686
NAXOS	1.3	-
METHONI		
SANTORINI	2.1	-
SOUDA	1.7	77
RODOS	1.1	-
HERAKLIO	1.4	1
SITIA	0.9	-

(I) deviation of mean temperature from normal values  
 (II) deviation of monthly precipitation height from normal values %.

# Climatic Bulletin

## General Description

Precipitation amounts were higher enough than normals over most parts of mainland and over north-central Aegean area. On the contrary they were lower over northwest parts.  
The mean temperature varied higher than normal values everywhere.

### Climatic Parameters :

- ❖ **Normal Values** : normal values for various parameters (temperature, precipitation, etc) are defined as mean values calculated for 30 years. These normal values are used as basis and represent the mean situation. They can be specified in 10 daily, monthly, seasonally and yearly level and are used for the trend comparison of 10 days, month, season or year as: rainy decameron, mild winter, cool August etc.

### Measurement :

- ❖ **Precipitation**  
1 mm = 1 litre/m<sup>2</sup>

### Table Legend :

Tmean : Mean Temperature  
TN : Minimum Temperature  
TX : Maximum Temperature  
RR : Precipitation height(mm)  
INST : Sun Duration (hours)

### UTC hours (Universal Time Coordinates) in Greece :

- ❖ Winter : UTC hour = local hour - 2
- ❖ Summer : UTC hour = local hour - 3

© Hellenic National Meteorological Service  
Reproduction is prohibited without written authorization  
14 El.Venizelou 16777  
Helliniko, Athens  
Greece