




Climatic Bulletin

September 2017

 **Max
temperature**

 **Min
temperature**

 **Mean
temperature**

 **Precipitation**

 **Sunshine
duration**

September had fluctuations in temperature values, specifically lower than normal ones during the first and last week but higher values in the intermediate period. Also significant precipitation amounts recorded towards the close of month.



ΕΘΝΙΚΗ
ΜΕΤΕΩΡΟΛΟΓΙΚΗ
ΥΠΗΡΕΣΙΑ
HELLENIC NATIONAL METEOROLOGICAL SERVICE



Temperature

First 10-day period

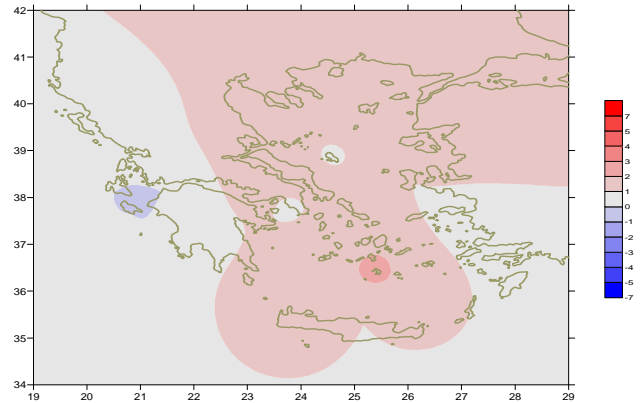
More specific (varied) :

Minimum:

from 5°C to 19°C over north mainland,
from 10°C to 23°C over central mainland,
from 13°C to 24°C over rest parts.

Maximum:

from 24°C to 35°C over north mainland,
from 26°C to 33°C over central mainland,
from 24°C to 35°C over rest parts.



Deviation of mean temperature from normal values

Second 10-day period

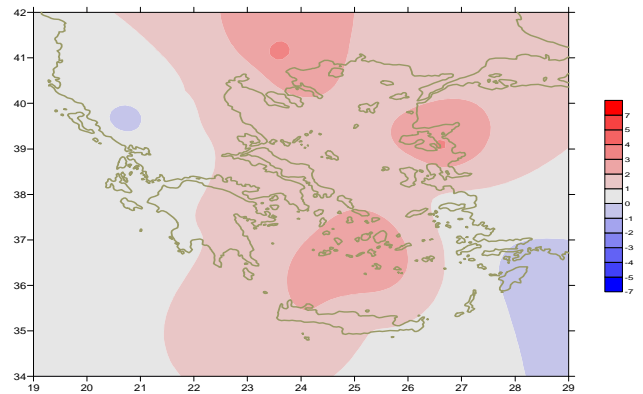
More specific (varied) :

Minimum:

from 7°C to 20°C over north mainland,
from 12°C to 23°C over central mainland,
from 12°C to 24°C over rest parts.

Maximum:

from 23°C to 39.9°C over north mainland,
from 27°C to 41°C over central mainland,
from 27°C to 38°C over rest parts.



Deviation of maximum temperature from normal values

Third 10-day period

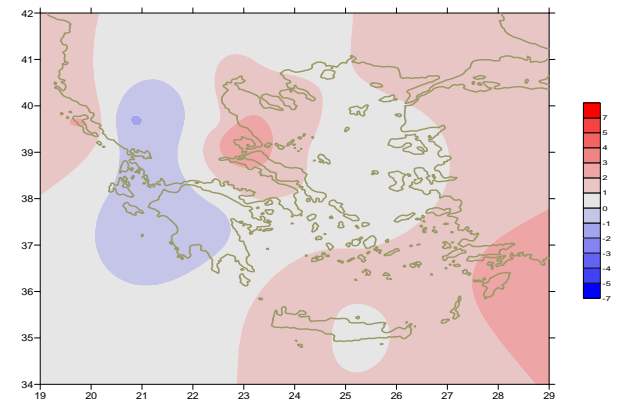
More specific (varied) :

Minimum:

from 1°C to 18°C over north mainland,
From 5°C to 19°C over central mainland,
from 8°C to 21°C over rest parts.

Maximum:

from 14°C to 30°C over north mainland,
from 20°C to 30°C over central mainland,
From 21°C to 28°C over rest parts.



Deviation of minimum temperature from normal values



P r e c i p i t a t i o n

First 10-day period

Significant precipitation over northwest parts at the end.

More specific:

9mm in Kastoria (3/9). 4mm in Ioannina (8/9),

34mm in Konitsa, 19mm in Kerkira, 11mm in Kastoria,

7mm in Edessa, 7mm in Preveza (9/9).

Second 10-day period

Luck of precipitation almost everywhere with the exception of northwest parts.

4mm in Konitsa, 2mm in Kerkira (11/9),

6mm in Ioannina (12/9).

Third 10-day period

Significant precipitation from the middle till the end of period.

More specific:

9mm in Kerkira, 7mm in Argostoli, 5mm in Tripoli,

5mm in Spata, 7mm in Tatoi (25/9),

47mm in Chrisoupoli, 10mm in Alexandroupoli,

18mm in Serres (26/9),

10mm in Larisa, 4mm in Elefsina (27/9),

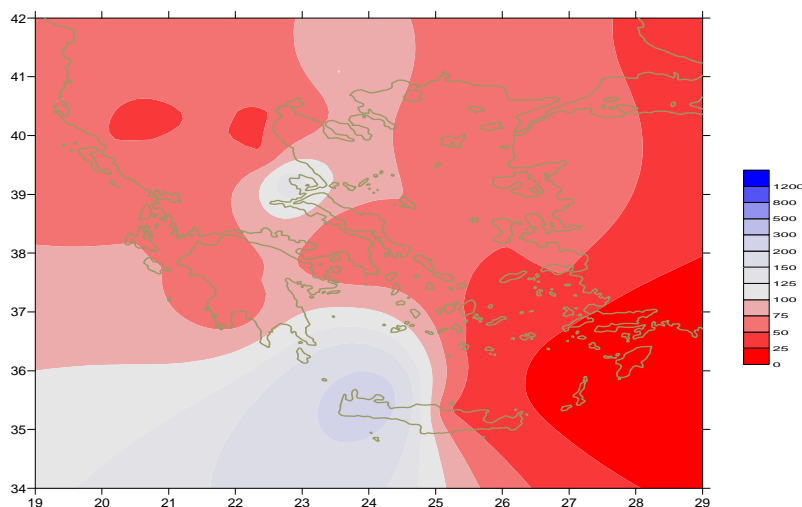
27mm in Aghialos, 18mm in Edessa, 10mm in Kastoria,

9mm in Skiathos (28/9),

22mm in Souda, 9mm in Zakynthos, 10mm in Argostoli,

6mm in Astros(29/9),

8mm in Limnos, 8mm in Souda (30/9).



Deviation of monthly precipitation height from normal values (%)

TABLE OF MEAN VALUES

STATION	Longitude	Latitude	Tmean	TX	TN	RR	INST
SERRES	23,53	41,07	23,6	31,2	14,8	23	250
FLORINA	21,40	40,78					
KASTORIA	21,27	40,45	19	25,8	10,4	28	227
TRIKALA_IMATHIAS	22,55	40,60					
THESSALONIKI	22,97	40,52	23,5	28,5	16,8	3	265
CHRYSOUPOLI	24,62	40,92	22	26,8	15,9	49	259
ALEXANDROUPOLI	25,95	40,85	22,3	27,4	15,3	12	279
KOZANI	21,83	40,28	20,6	26,3	12,6	7	
KERKYRA	19,92	39,62	23,3	28	18,6	31	272
IOANNINA	20,82	39,70	19,9	26,9	11,1	21	221
PREVEZA	20,76	38,91					
TRIKALA_THESSALIAS	21,77	39,52					
LARISA	22,45	39,65	23,6	30	14,8	9	227
LIMNOS	25,23	39,92	22,7	27	17,2	8	278
ARTA	21,00	39,17					
AGHIALOS	22,78	39,21	23,7	28,4	16,8	34	266
MYTILINI	26,60	39,05	24,9	29,9	19,3	0	301
VELO	22,77	37,97					
AGRINIO	21,35	38,60					
LAMIA	22,43	38,87					
ANDRAVIDA	21,28	37,92	23	28	17	6	273
SKYROS	24,48	38,96	23	26,2	19,6	10	243
ARGOSTOLI	20,50	38,12	23,5	27,7	18,9	20	271
ARAXOS	21,42	38,15	23,5	28,5	16,3	2	278
TANAGRA	23,57	38,33	24,4	29,7	16,5	3	281
HIOS	26,13	38,35	23,6	27,3	17,7	0	293
PYRGOS	21,42	37,67					
TRIPOLI	22,40	37,52	20,9	28,1	11,1	17	274
TATOI	23,78	38,10	23,8	29,2	16,3	13	
HELLINIKO	23,73	37,90	25,1	29,4	20,5	0	273
ELEYSINA	23,55	38,07	25,7	30,2	19,2	10	
ZAKYNTHOS	20,88	37,75	23,7	28,1	18	16	274
SAMOS	26,92	37,68	24,8	29,1	20	0	
ARGOS	22,75	37,63					
KALAMATA	22,02	37,07	23,4	29,6	15,9	7	287
NAXOS	25,37	37,10	24,4	27,2	20,6	0	304
METHONI	21,70	36,82					
MHLOS	24,43	36,73					
SPATA	23,95	37,95	24,6	28,9	17,3	10	
KOS	27,08	36,80					
KYTHIRA	22,98	36,15					
SANTORINI	25,41	36,41	24,9	28,6	21	0	293
SOUDA	24,12	35,55	24,4	29,4	20	48	286
RODOS	28,08	36,40	25,4	28	22,9	0	316
MYKONOS	25,35	37,43	24,1	27,1	21,1	0	
HRAKLEIO	25,18	35,33	24,5	27,5	19,8	7	263
IERAPETRA	25,73	35,02					
SITEIA	26,10	35,21					
RETHYMNO	24,50	35,36					
TYMPAKI	24,76	35,06					
KASTELI	25,33	35,18	23,5	28,3	17,5	4	290
KARPATOS	27,15	35,42	25	27,8	22,8	0	
PAROS	25,13	37,02	24,1	27,5	20,4	0	291
SYROS	24,95	37,42					
IKARIA	26,35	37,68					

**TABLE OF DEVIATIONS
FROM NORMAL VALUES**

STATION	TMEAN (deviation) (I)	PRECI (deviation %) (II)
SERRES	2	110
FLORINA		
THESSALONIKI	1.7	12
ALEXANDROUPOLI	1.3	39
KOZANI	1.1	21
KERKYRA	0.6	41
IOANNINA	-0.4	38
LARISA	1.6	31
LIMNOS	1.3	41
AGHIALOS	1.5	109
MYTILINI	1.9	0
AGRINIO		
SKYROS	0.9	56
ARGOSTOLI	0	67
ARAXOS	0	9
HIOS	1	0
HELLINIKO	0.8	0
ZAKYNTHOS	-0.1	63
SAMOS	0.5	0
KALAMATA	0.1	25
NAXOS	1.8	0
METHONI		
SANTORINI	2.3	1
SOUDA	1.4	257
RODOS	0.8	0
HERAKLIO	1	36
SITIA		

(I) deviation of mean temperature from normal values
 (II) deviation of monthly precipitation height from normal values %.

Climatic Bulletin

General Description

Precipitation amounts were lower than normals with the exception of the north Aegean area, eastern Sterea-Evia and the western parts of Creta island.
The mean temperature varied higher enough than normal values almost everywhere.

Climatic Parameters :

- ❖ **Normal Values** : normal values for various parameters (temperature, precipitation, etc) are defined as mean values calculated for 30 years. These normal values are used as basis and represent the mean situation. They can be specified in 10 daily, monthly, seasonally and yearly level and are used for the trend comparison of 10 days, month, season or year as: rainy decameron, mild winter, cool August etc.

Measurement :

- ❖ **Precipitation**
1 mm = 1 litre/m²

Table Legend :

Tmean : Mean Temperature
TN : Minimum Temperature
TX : Maximum Temperature
RR : Precipitation height(mm)
INST : Sun Duration (hours)

UTC hours (Universal Time Coordinates) in Greece :

- ❖ Winter : UTC hour = local hour - 2
- ❖ Summer : UTC hour = local hour - 3

© Hellenic National Meteorological Service
Reproduction is prohibited without written authorization
14 El.Venizelou 16777
Helliniko, Athens
Greece