




Climatic Bulletin

June 2018

 **Max
temperature**

 **Min
temperature**

 **Mean
temperature**

 **Precipitation**

 **Sunshine
duration**

The main characteristic of June was the lack of northerly winds (known as Etesians) and the high amounts of precipitation from the middle of the period till the end. Specifically heavy rainfalls and thunderstorms recorded locally over Ionian area, central and north mainland and central and north Aegean area, causing significant problems.



ΕΘΝΙΚΗ
ΜΕΤΕΩΡΟΛΟΓΙΚΗ
ΥΠΗΡΕΣΙΑ

HELLENIC NATIONAL METEOROLOGICAL SERVICE



Temperature

First 10-day period

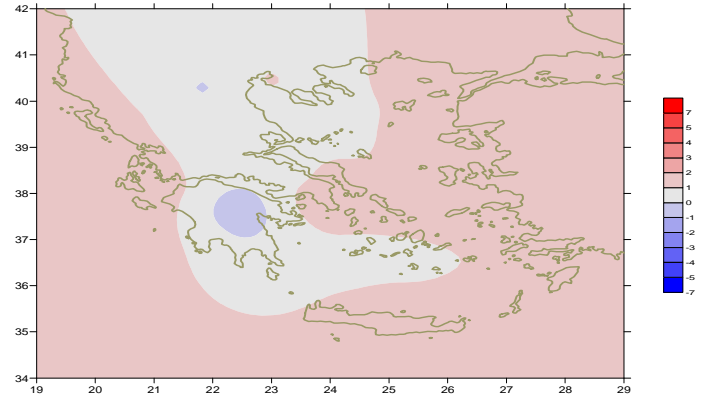
More specific (varied) :

Minimum:

from 9°C to 24°C over north mainland,
 from 14°C to 23°C over central mainland,
 from 14 C to 23°C over rest parts.

Maximum:

from 26°C to 34°C over north mainland,
 from 28°C to 37°C over central mainland,
 from 26°C to 36°C over rest parts.



Deviation of mean temperature from normal values

Second 10-day period

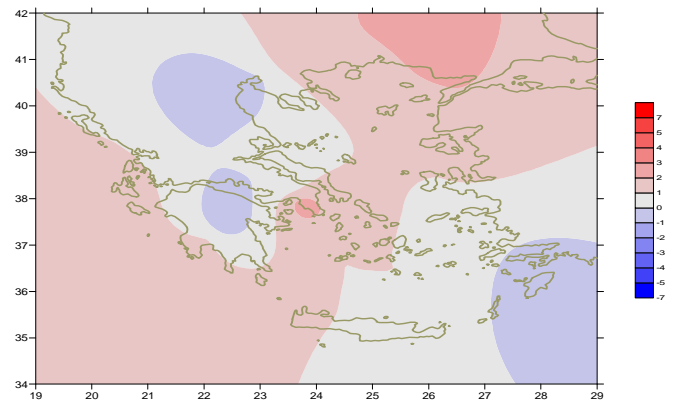
More specific (varied) :

Minimum:

from 10°C to 21°C over north mainland,
 from 16°C to 23°C over central mainland,
 from 13°C to 23°C over rest parts.

Maximum:

from 23°C to 35°C over north mainland,
 from 23°C to 34°C over central mainland,
 from 27°C to 33°C over rest parts.



Deviation of maximum temperature from normal values

Third 10-day period

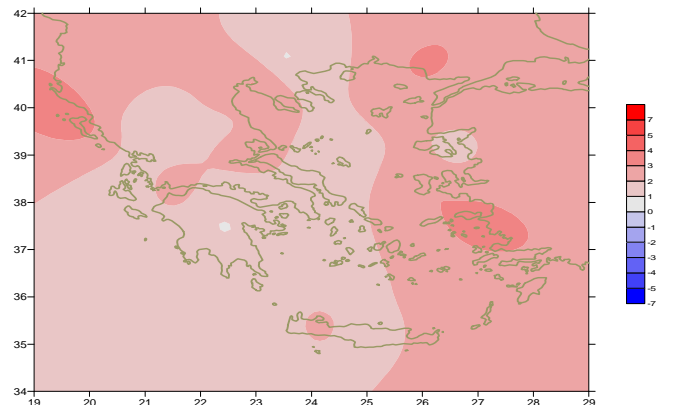
More specific (varied) :

Minimum:

from 12°C to 20°C over north mainland,
 From 16°C to 24°C over central mainland,
 from 16°C to 24°C over rest parts.

Maximum:

from 17°C to 35°C over north mainland,
 from 20°C to 34°C over central mainland,
 from 24°C to 33°C over rest parts.



Deviation of minimum temperature from normal values



Precipitation

First 10-day period

Locally remarkable precipitation.

More specific:

*8mm in Edessa, 7mm in Tripoli, 4mm in Kozani (3/6),
17mm in Ioannina, 10mm in Tatoi, 12mm in Edessa(10/6).*

Second 10-day period

Locally remarkable precipitation between 14-19/6

More specific:

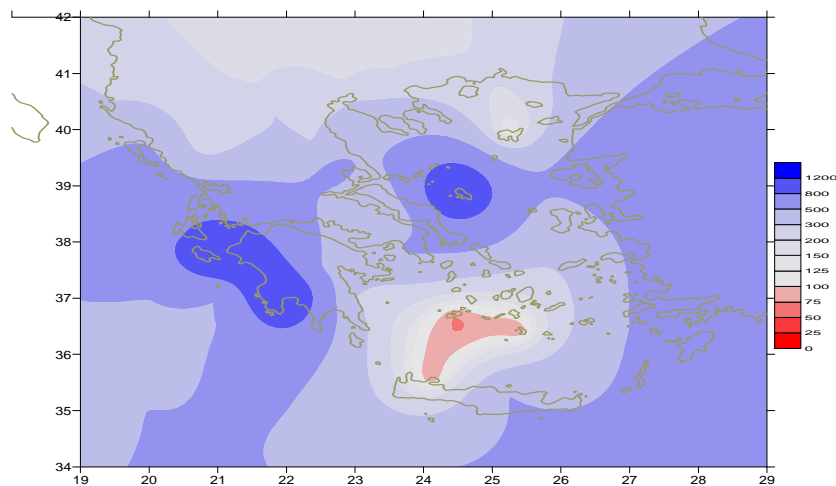
*26mm in Andravida, 46mm in Araxos (15/6),
25mm in Kerkira (16/6),
27mm in Skiros, 17mm in Argostoli, 20mm in Desfina,
21mm in Tripoli, 14mm in Leonidio (17/6),
52mm in Skiathos, 22mm in Rodos, 13mm in Kalamata (19/6)*

Third 10-day period

Locally remarkable precipitation between 25-29/6.

More specific:

*37mm in Andravida, 22mm in Kerkira(25/6),
29mm in Kastoria, 25mm in Thessaloniki, 33mm in Larisa, 72mm in Aghialos,
37mm in Andravida, 54mm in Argostoli, 49mm in Tripoli, 45mm in Zákynthos,
32mm in Kalamata (26/6),
76mm in Chrissoupoli, 22mm in Thessaloniki, 61mm in Alexandroupoli,
29mm in Aghialos, 34mm in Mitilini, 35mm in Lamia, 23mm in Skiros,
29mm in Argostoli, 23mm in Tanagra, 21mm in Chios, 36mm in Elefsina(27/6),
99mm in Chrissoupoli, 34mm in Serres, 37mm in Edessa, 26mm in Kastoria (28/6).*



*Deviation of monthly precipitation
height from normal values (%)*

TABLE OF MEAN VALUES

STATION	Longitude	Latitude	Tmean	TX	TN	RR	INST
SERRES	23,53	41,07	24,3	31,3	17,2	66	230
FLORINA	21,40	40,78					
KASTORIA	21,27	40,45	20,5	26,2	13,8	91	207
TRIKALA_IMATHIAS	22,55	40,60					
THESSALONIKI	22,97	40,52	25,3	28,9	19,1	79	246
CHRYSOUPOLI	24,62	40,92	24,7	28,4	18,6	196	276
ALEXANDROUPOLI	25,95	40,85	24,9	29,2	18	87	280
KOZANI	21,83	40,28	21,2	25,5	14,9	89	
KERKYRA	19,92	39,62	25,3	28,8	19,8	79	276
IOANNINA	20,82	39,70					
PREVEZA	20,76	38,91	25,1	29,2	19,6	35	
TRIKALA_THESSALIAS	21,77	39,52					
LARISA	22,45	39,65	25,4	30,6	16,8	68	232
LIMNOS	25,23	39,92	24,4	28,2	19	14	308
ARTA	21,00	39,17					
AGHIALOS	22,78	39,21	25,3	29,3	18,5	139	261
MYTILINI	26,60	39,05	26,5	30,3	20,9	46	350
VELO	22,77	37,97					
AGRINIO	21,35	38,60					
LAMIA	22,43	38,87					
ANDRAVIDA	21,28	37,92	24,8	28,7	18,1	133	283
SKYROS	24,48	38,96	24,6	27	20,7	63	222
ARGOSTOLI	20,50	38,12	24,7	28,2	19,5	160	326
ARAXOS	21,42	38,15	25,2	28,9	18,8	77	272
TANAGRA	23,57	38,33	26	30,2	17,4	40	290
HIOS	26,13	38,35	25,4	28,5	20,2	41	331
PYRGOS	21,42	37,67					
TRIPOLI	22,40	37,52	20,9	26,6	12,8	135	262
TATOI	23,78	38,10	25	29,3	17,8	34	
HELLINIKO	23,73	37,90	26,7	31	21,5	32	319
ELEYSINA	23,55	38,07	26,8	31,1	20,9	63	
ZAKYNTHOS	20,88	37,75	25,6	29,2	19,3	80	320
SAMOS	26,92	37,68	26,3	29,8	21,5	12	
ARGOS	22,75	37,63					
KALAMATA	22,02	37,07	24,7	30	17,3	80	308
NAXOS	25,37	37,10					
METHONI	21,70	36,82					
MHLOS	24,43	36,73					
SPATA	23,95	37,95	25,6	29,5	19,1	29	
KOS	27,08	36,80	25,1	28,6	21,2	16	
KYTHIRA	22,98	36,15					
SANTORINI	25,41	36,41					
SOUDA	24,12	35,55	25,5	29,8	20,6		329
RODOS	28,08	36,40	25,7	28	22,7	23	353
MYKONOS	25,35	37,43	24,8	27,4	21,5	2	
HRAKLEIO	25,18	35,33	25,6	27,9	20,8	15	346
IERAPETRA	25,73	35,02					
SITEIA	26,10	35,21					
RETHYMNO	24,50	35,36					
TYMPAKI	24,76	35,06					
KASTEI	25,33	35,18	24,2	28,7	17,7	15	308
KARPATOS	27,15	35,42	25,1	28	22,1	0	
PAROS	25,13	37,02	24,9	28,2	21,1	0	342
SYROS	24,95	37,42					
IKARIA	26,35	37,68					

11,314,58,13617810,214,16,45611,314,57,89612510,713,7820210,5165,88616112,715,410,232137

**TABLE OF DEVIATIONS
FROM NORMAL VALUES**

STATION	TMEAN (deviation) (I)	PRECI (deviation %) (II)
SERRES	0.4	150
FLORINA		
THESSALONIKI	1.1	250
ALEXANDROUPOLI	1.9	319
KOZANI	-0.1	229
KERKYRA	1.5	552
IOANNINA	1	230
LARISA	0.5	289
LIMNOS	1.1	64
AGHIALOS	0.9	659
MYTILINI	1.9	767
AGRINIO		
SKYROS	0.9	1211
ARGOSTOLI	1.5	766
ARAXOS	1.2	856
HIOS	1.5	268
HELLINIKO	1.7	533
ZAKYNTHOS	1.5	1100
SAMOS	1.1	444
KALAMATA	0.6	1230
NAXOS		
METHONI		
SANTORINI		
SOUDA	1.1	20
RODOS	1	793
HERAKLIO	1.3	469
SITIA		

(I) deviation of mean temperature from normal values
 (II) deviation of monthly precipitation height from normal values %.

Climatic Bulletin

General Description

Precipitation amounts were higher enough than normal values over mainland and over most parts of Ionian and central-north Aegean area.
The mean temperature varied slightly higher than normals almost everywhere. .

Climatic Parameters :

- ❖ **Normal Values** : normal values for various parameters (temperature, precipitation, etc) are defined as mean values calculated for 30 years. These normal values are used as basis and represent the mean situation. They can be specified in 10 daily, monthly, seasonally and yearly level and are used for the trend comparison of 10 days, month, season or year as: rainy decameron, mild winter, cool August etc.

Measurement :

- ❖ **Precipitation**
1 mm = 1 litre/m²

Table Legend :

Tmean : Mean Temperature
TN : Minimum Temperature
TX : Maximum Temperature
RR : Precipitation height(mm)
INST : Sun Duration (hours)

UTC hours (Universal Time Coordinates) in Greece :

- ❖ Winter : UTC hour = local hour - 2
- ❖ Summer : UTC hour = local hour - 3

© Hellenic National Meteorological Service
Reproduction is prohibited without written authorization
14 El.Venizelou 16777
Helliniko, Athens
Greece