



# Climatic Bulletin

July 2018

 **Max  
temperature**

 **Min  
temperature**

 **Mean  
temperature**

 **Precipitatio  
n**

 **Sunshine  
duration**

The main characteristic of July was the reduced appearance of northerly winds (known as Etesians) and

the high amounts of precipitation.

Specifically heavy rainfalls and thunderstorms (with hail) caused local floods over eastern mainland and over north Aegean area, as well.



## Temperature

### First 10-day period

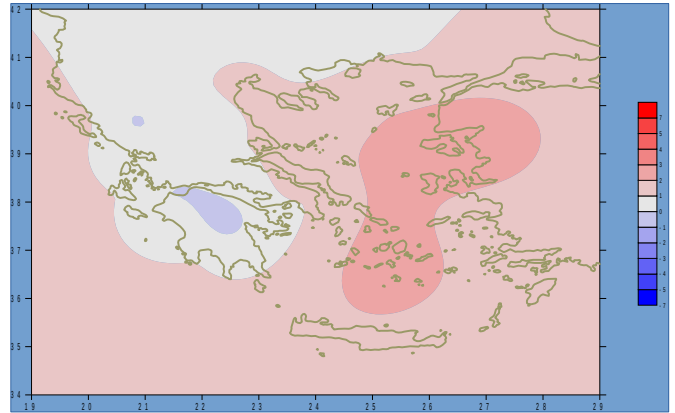
More specific (varied) :

#### Minimum:

from 14°C to 23°C over north mainland,  
from 15°C to 24°C over central mainland,  
from 17°C to 26°C over rest parts.

#### Maximum:

from 26°C to 36°C over north mainland,  
from 27°C to 38°C over central mainland,  
from 27°C to 38°C over rest parts.



**Deviation of mean temperature  
from normal values**

### Second 10-day period

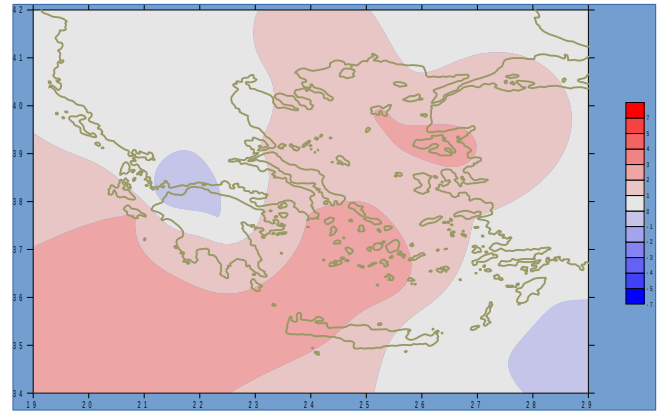
More specific (varied) :

#### Minimum:

from 14°C to 24°C over north mainland,  
from 15°C to 25°C over central mainland,  
from 14°C to 25°C over rest parts.

#### Maximum:

from 29°C to 35°C over north mainland,  
from 30°C to 38°C over central mainland,  
from 28°C to 39°C over rest parts.



**Deviation of maximum  
temperature from normal  
values**

### Third 10-day period

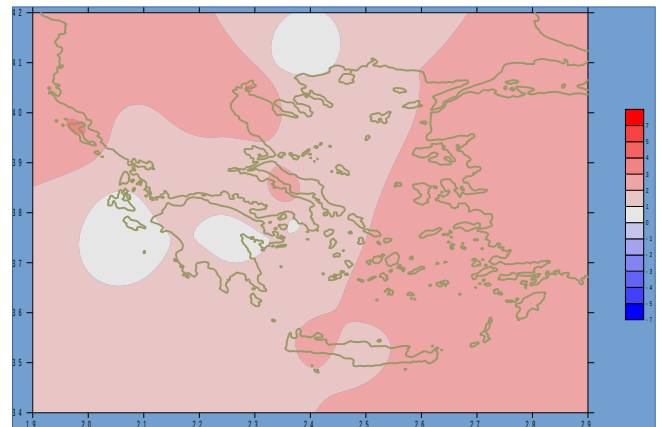
More specific (varied) :

#### Minimum:

from 14°C to 24°C over north mainland,  
From 16°C to 25°C over central mainland,  
from 18°C to 25°C over rest parts.

#### Maximum:

from 27°C to 37°C over north mainland,  
from 28°C to 38°C over central mainland,  
from 26°C to 40.2°C over rest parts.



**Deviation of minimum temperature  
from normal values**



## Precipitation

### First 10-day period

Locally remarkable precipitation.

More specific:

36mm in Serres, 5mm in Limnos, 8mm in Kozani (7/7),  
32mm in Elefsina, 23mm in Tatoi, 26mm in Hellinikon,  
21mm in Tithorea, 29mm in Doxato (8/7),  
9mm in Larisa, 10mm in Kozani, 26mm in Hellinikon (9/7),  
6mm in Elefsina, 13mm in Oreoi, 7mm in Kimi (10/7).

### Second 10-day period

Reduced precipitation locally over northern mainland.

More specific:

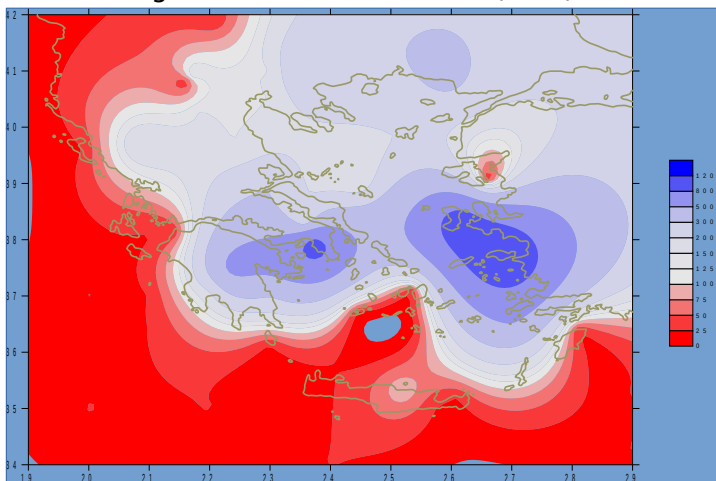
5mm in Doxato (13/7),  
11mm in Chrisoupoli, 8mm in Doxato (17/7).

### Third 10-day period

Locally remarkable precipitation.

More specific:

12mm in Kastoria, 17mm in Kozani (23/7),  
14mm in Astros, 26mm in Leonidio (24/7),  
11mm in Thessaloniki, 37mm in Tripoli(25/7),  
43mm in Alexandroupoli, 17mm in Edessa, 14mm in Tripoli,  
18mm in Aghialos, 20mm in Tatoi (26/7),  
21mm in Ioannina, 17mm in Syros, 20mm in Ormenio, 9mm in Samos  
(27/7),  
42mm in Argos, 29mm in Hellinikon, 16mm in Serres,  
19mm in Oreoi, 23mm in Lavrio, 52mm in N.Filadelfia, 11mm in Kimi  
(29/7),  
10mm in Konitsa, 8mm in Lamia (30/7),  
9mm in Aghialos, 4mm in Skiathos (31/7).



**Deviation of monthly  
precipitation height from normal  
values (%)**

TABLE OF MEAN VALUES

STATION	Longitude	Latitude	Tmean	TX	TN	RR	I NST
SERRES	23,53	41,07	26,4	33,4	18,8	83	320
FLORI NA	21,40	40,78					
KASTORI A	21,27	40,45	24	30,2	15,3	19	310
TRI KALA_ I MATHI AS	22,55	40,60					
THESSALONI KI	22,97	40,52	27,9	32,1	21,5	34	353
CHRYSOUPOLI	24,62	40,92	26,2	29,8	20,6	36	306
ALEXANDROUPOLI	25,95	40,85	26,7	30,9	19,4	60	315
KOZANI	21,83	40,28	24,9	29,6	18,4	51	
KERKYRA	19,92	39,62	27,6	31,5	21,4	0	375
I OANNI NA	20,82	39,70	24,7	31,7	16	48	342
PREVEZA	20,76	38,91	26	29,9	20,5	4	
TRI KALA_ THESSALI AS	21,77	39,52					
LARI SA	22,45	39,65	27,8	33,3	19,7	27	309
LI MNOS	25,23	39,92	27,4	31	21,3	20	365
ARTA	21,00	39,17					
AGHI ALOS	22,78	39,21	27,7	31,9	20,3	42	334
MYTI LI NI	26,60	39,05	29,4	32,7	24,2	0	401
VELO	22,77	37,97					
AGRI NI O	21,35	38,60					
LAMI A	22,43	38,87					
ANDRAVI DA	21,28	37,92	26,3	30,1	19,3	0	374
SKYROS	24,48	38,96	27,2	29,2	22,8	7	324
ARGOSTOLI	20,50	38,12	26,5	30,1	21,3	0	384
ARAXOS	21,42	38,15	26,6	30,4	20,1	0	361
TANAGRA	23,57	38,33	28,7	33,3	20,4	13	352
HI OS	26,13	38,35	28,6	31,5	23,6	1	377
PYRGOS	21,42	37,67					
TRI POLI	22,40	37,52	24,1	30,1	14,8	112	316
TATOI	23,78	38,10	27,3	31,8	20	67	
HELLI NI KO	23,73	37,90	28,7	33,5	23,7	55	363
ELEYSI NA	23,55	38,07	29,3	33,8	23,2	44	
ZAKYNTHOS	20,88	37,75	27,4	31,7	20,9	0	397
SAMOS	26,92	37,68	29,7	33,5	25	8	
ARGOS	22,75	37,63					
KALAMATA	22,02	37,07	27,4	32,7	19,5	6	383
NAXOS	25,37	37,10					
METHONI	21,70	36,82					
MHLOS	24,43	36,73					
SPATA	23,95	37,95	28,2	32,1	21	14	
KOS	27,08	36,80	28	32,1	23,9	0	
KYTHI RA	22,98	36,15					
SANTORI NI	25,41	36,41	28,3	30,9	24,4	0	356
SOUDA	24,12	35,55	28,1	32,7	22,8	0	362
RODOS	28,08	36,40	28,2	30,6	25,1	0	391
MYKONOS	25,35	37,43	27,5	30,5	23,9	4	
HRAKLEI O	25,18	35,33	27,8	30	23,3	1	376
I ERAPETRA	25,73	35,02					
SI TEI A	26,10	35,21	27,1	28,8	25,1	0	328
RETHYMNO	24,50	35,36					
TYMPAKI	24,76	35,06					
KASTELI	25,33	35,18	26,6	30,7	21,4	3	335
KARPATIOS	27,15	35,42	27,2	30,1	24,5	0	
PAROS	25,13	37,02	27,8	30,4	23,7	4	
SYROS	24,95	37,42					
I KARI A	26,35	37,68					

11,314,58,13617810,214,16,45611,314,57,89612510,713,7820210,5165,88616112,715,410,232137

**TABLE OF DEVIATIONS  
FROM NORMAL VALUES**

<b>STATION</b>	<b>TMEAN ( deviation ) ( I )</b>	<b>PREC ( deviation % ) ( II )</b>
SERRES	0.3	265
FLORI NA		
THESSALONI KI	1.4	133
ALEXANDROUPOLI	1.1	341
KOZANI	0.9	131
KERKYRA	1.2	0
I OANNI NA	-0.1	168
LARI SA	0.7	133
LI MNOS	1.9	194
AGHI ALOS	1	236
MYTI LI NI	3	0
AGRI NI O		
SKYROS	1.9	119
ARGOSTOLI	1	0
ARAXOS	0	0
HI OS	2.2	1000
HELLI NI KO	0.9	982
ZAKYNTHOS	0.7	0
SAMOS	1.3	1143
KALAMATA	0.9	171
NAXOS		
METHONI		
SANTORI NI	2.6	0
SOUDA	2.4	0
RODOS	0.1	0
HERAKLI O	1.4	100
SI TIA	0.2	0

(I) deviation of mean temperature from normal values  
 (II) deviation of monthly precipitation height from normal values  
 %.

# Climatic Bulletin

## General Description

Precipitation amounts were higher enough than normal values locally over mainland and over most parts of north Aegean area. Meanwhile lack of precipitation recorded over Ionian, over western Peloponnese, over parts of Creta and over the area of Dodecanese. The mean temperature varied slightly higher than normals almost everywhere.

### Climatic Parameters :

- ❖ **Normal Values :** normal values for various parameters (temperature, precipitation, etc) are defined as mean values calculated for 30 years. These normal values are used as basis and represent the mean situation. They can be specified in 10 daily, monthly, seasonal and yearly level and are used for the trend comparison of 10 days, month, season or year as: rainy decameron, mild winter, cool August etc.

### Measurement :

- ❖ **Precipitation**  
1 mm = 1 litre/m<sup>2</sup>

### Table Legend :

Tmean : Mean Temperature  
 TN : Minimum Temperature  
 TX : Maximum Temperature  
 RR : Precipitation height(mm)  
 INST : Sun Duration (hours)

### UTC hours (Universal Time Coordinates) in Greece :

- ❖ Winter : UTC hour = local hour - 2
- ❖ Summer : UTC hour = local hour - 3

Hellenic National Meteorological Service  
 Reproduction is prohibited without written authorization  
 14 El.Venizelou 16777  
 Helliniko, Athens  
 Greece



Climatological  
 Division  
 M. Michelaraki  
 meteorologist

Website :  
[www.hnms.gr](http://www.hnms.gr)

