




Climatic Bulletin

October 2018

 **Max
temperature**

 **Min
temperature**

 **Mean
temperature**

 **Precipitation**

 **Sunshine
duration**

October started with high temperatures but a cold wave which affected the whole area for two days (25-26/10) had as a result the prevailing of gale force northern winds and the rapid declining of temperature values..
Meanwhile during last ten days strong rainfalls recorded mainly over Iperus, south Ionion and eastern central mainland.



ΕΘΝΙΚΗ
ΜΕΤΕΩΡΟΛΟΓΙΚΗ
ΥΠΗΡΕΣΙΑ

HELLENIC NATIONAL METEOROLOGICAL SERVICE



Temperature

First 10-day period

More specific (varied) :

Minimum:

from 3°C to 18°C over north mainland,
from 8°C to 20°C over central mainland,
from 10°C to 22°C over rest parts.

Maximum:

from 20°C to 28°C over north mainland,
from 17°C to 28°C over central mainland,
from 15°C to 27°C over rest parts.

Second 10-day period

More specific (varied) :

Minimum:

from 1°C to 17°C over north mainland,
from 6°C to 19°C over central mainland,
from 8°C to 21°C over rest parts.

Maximum:

from 15°C to 27°C over north mainland,
from 15°C to 26°C over central mainland,
from 18°C to 29°C over rest parts.

Third 10-day period

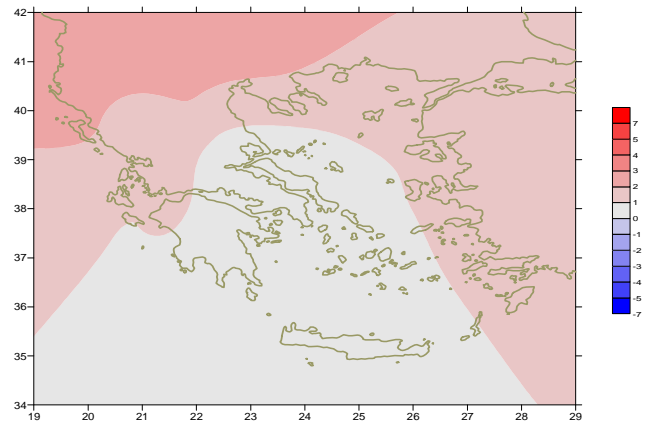
More specific (varied) :

Minimum:

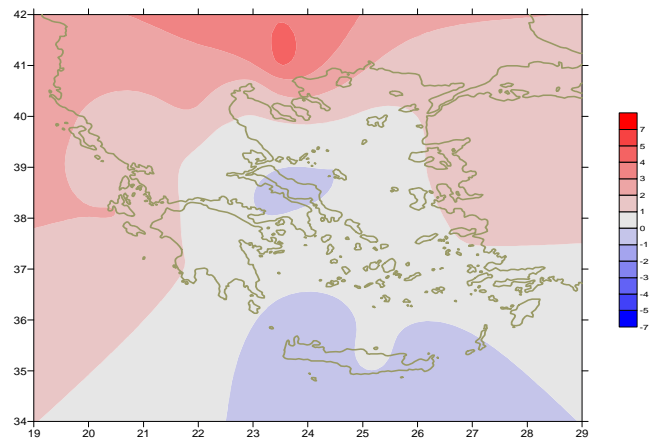
from -5°C to 15°C over north mainland,
from 1°C to 19°C over central mainland,
from 5°C to 22°C over rest parts.

Maximum:

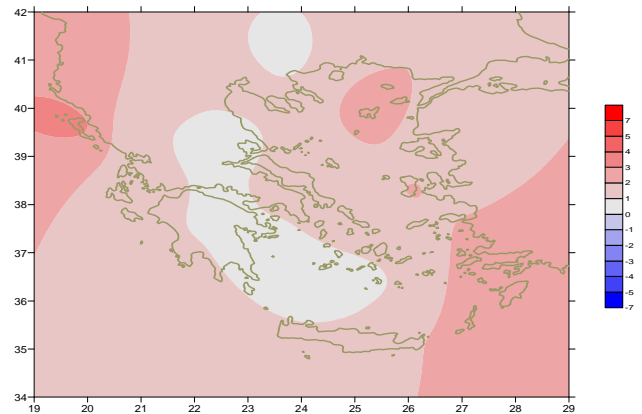
from 12°C to 26°C over north mainland,
from 14°C to 26°C over central mainland,
from 16°C to 27°C over rest parts.



Deviation of mean temperature from normal values



Deviation of maximum temperature from normal values



Deviation of minimum temperature from normal values



P r e c i p i t a t i o n

First 10-day period

Πρώτο δεκαήμερο

Locally remarkable precipitation.

More specific:

33mm in Chrissoupoli, 21mm in Alexandroupoli, 37mm in Limnos, 41mm in Skiathos, 21mm in Skiros, 23mm in Tanagra, 16mm in Tatoi, 10mm in Hellinikon, 10mm in Elefsina, 15mm in Spata, 21mm in Oreoi, 18mm in Kotroni, 29mm in Soufli (1/10), 15mm in Argostoli, 41mm in Zakynthos (3/10), 13mm in Florina, 49mm in Kerkyra, 17mm in Fournoi (7/10), 29mm in Soufli (1/10).

Δεύτερο δεκαήμερο

Light local precipitation.

More specific:

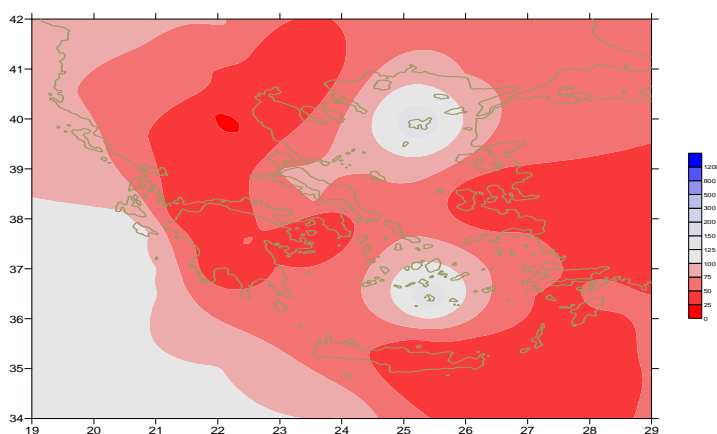
6mm in Tithorea (12/10), 11mm in Oreoi (13/10), 15mm in Oreoi (15/10), 5mm in Ormenio (20/10).

Third 10-day period

Very high amounts of precipitation mainly at the end.

More specific:

11mm in Kastoria, 17mm in Argostoli, 43mm in Zakynthos, 12mm in Souda, 28mm in Palaiochora (22/10), 21mm in Lamia, 21mm in Adravida, 60mm in Argostoli, 29mm in Zakynthos, 58mm in Leonidio, 12mm in Gavdos, 21mm in Tithorea, 15mm in Oreoi, 13mm in Antikithira (23/10), 30mm in Kos, 30mm in Santorini, 26mm in Souda, 33mm in Gavdos, 11mm in Palaiochora, 21mm in Antikithira (24/10), 50mm in Kerkira (28/10).



*Deviation of monthly precipitation height
from normal values (%)*

TABLE OF MEAN VALUES

STATION	Longitude	Latitude	Tmean	TX	TN	RR	INST
SERRES	23,53	41,07	17,7	25,3	9,6	2	190
FLORINA	21,40	40,78					
KASTORIA	21,27	40,45	14,5	21,3	7,5	19	184
TRIKALA_IMATHIAS	22,55	40,60					
THESSALONIKI	22,97	40,52	18	22,5	12,4	0	200
CHRYSOUPOLI	24,62	40,92	16,7	21,6	11,5	41	212
ALEXANDROUPOLI	25,95	40,85	17,1	21,5	12,1	32	186
KOZANI	21,83	40,28	15,5	21,2	9,3	0	
KERKYRA	19,92	39,62	20,6	25,1	16,6	120	175
IOANNINA	20,82	39,70	16,4	22,4	9,8	36	172
PREVEZA	20,76	38,91	20,9	25,5	16,4	18	
TRIKALA_THESSALIAS	21,77	39,52					
LARISA	22,45	39,65	17,2	22,9	10,4	9	150
LIMNOS	25,23	39,92	18	20,8	15	39	200
ARTA	21,00	39,17					
AGHIALOS	22,78	39,21	17,2	22,2	12,6	25	181
MYTILINI	26,60	39,05	19,4	22,8	15,6	9	245
VELO	22,77	37,97					
AGRINIO	21,35	38,60					
LAMIA	22,43	38,87					
ANDRAVIDA	21,28	37,92	19,7	25,5	13,4	35	240
SKYROS	24,48	38,96	18,7	20,5	16,8	22	180
ARGOSTOLI	20,50	38,12	20,8	24,7	17,3	108	205
ARAXOS	21,42	38,15	20,4	24,6	15,4	16	229
TANAGRA	23,57	38,33	17,2	21,6	12,9	30	190
HIOS	26,13	38,35	19,1	22,4	15,5	3	247
PYRGOS	21,42	37,67					
TRIPOLI	22,40	37,52	14,7	20,7	8,5	32	197
TATOI	23,78	38,10	17,2	21,3	13,2	17	
HELLINIKO	23,73	37,90	19,8	23,6	16,6	10	214
ELEYSINA	23,55	38,07	19,4	23,2	15,9	10	
ZAKYNTHOS	20,88	37,75	20,6	24,6	16,9	131	222
SAMOS	26,92	37,68	20,4	24,1	16,8	11	
ARGOS	22,75	37,63					
KALAMATA	22,02	37,07	19,6	25,5	14,4	19	214
NAXOS	25,37	37,10					
METHONI	21,70	36,82					
MHLOS	24,43	36,73					
SPATA	23,95	37,95	18,9	21,9	14,4	188	
KOS	27,08	36,80	20,4	23,9	17,7	50	
KYTHIRA	22,98	36,15					
SANTORINI	25,41	36,41	19,6	21,8	17,2	37	221
SOUDA	24,12	35,55	19,1	22,4	16	39	175
RODOS	28,08	36,40	22,1	25	19,7	18	255
MYKONOS	25,35	37,43	19	21,8	17,2		
HRAKLEIO	25,18	35,33	20,7	23,4	17,7	2	216
IERAPETRA	25,73	35,02					
SITEIA	26,10	35,21	20,6	22,9	18,5		170
RETHYMNO	24,50	35,36					
TYMPAKI	24,76	35,06					
KASTELI	25,33	35,18	18,1	22,5	14,2	8	214
KARPATOS	27,15	35,42	21,6	24,6	19,3		
PAROS	25,13	37,02	19,6	22,1	17,2		208
SYROS	24,95	37,42	19,3	21,7	17,8		232
IKARIA	26,35	37,68					

**TABLE OF DEVIATIONS
FROM NORMAL VALUES**

STATION	TMEAN (deviation) (I)	PRECI (deviation %) (II)
SERRES	2.3	5
FLORINA		
THESSALONIKI	1.9	0
ALEXANDROUPOLI	1.6	63
KOZANI	2.1	0
KERKYRA	2.2	81
IOANNINA	1.5	38
LARISA	1.1	19
LIMNOS	1.4	109
AGHIALOS	0.5	39
MYTILINI	1.1	24
AGRINIO		
SKYROS	0.6	57
ARGOSTOLI	1.1	100
ARAXOS	1.5	19
HIOS	1.1	8
HELLINIKO	0.5	21
ZAKYNTHOS	1	89
SAMOS	1.2	38
KALAMATA	0.8	19
NAXOS		
METHONI		
SANTORINI	0.7	127
SOUDA	0.1	49
RODOS	1.5	28
HERAKLIO	0.8	3
SITIA	0.5	0

(I) deviation of mean temperature from normal values
 (II) deviation of monthly precipitation height from normal values %.

Climatic Bulletin

General Description

Precipitation amounts were lower enough than normal values over most parts. Meanwhile lack of precipitation recorded over Central Macedonia and over Cyclades as well.
The mean temperature varied higher than normals almost everywhere.

Climatic Parameters :

- ❖ **Normal Values** : normal values for various parameters (temperature, precipitation, etc) are defined as mean values calculated for 30 years. These normal values are used as basis and represent the mean situation. They can be specified in 10 daily, monthly, seasonally and yearly level and are used for the trend comparison of 10 days, month, season or year as: rainy decameron, mild winter, cool August etc.

Measurement :

- ❖ **Precipitation**
1 mm = 1 litre/m²

Table Legend :

Tmean : Mean Temperature
TN : Minimum Temperature
TX : Maximum Temperature
RR : Precipitation height(mm)
INST : Sun Duration (hours)

UTC hours (Universal Time Coordinates) in Greece :

- ❖ Winter : UTC hour = local hour - 2
- ❖ Summer : UTC hour = local hour - 3

© Hellenic National Meteorological Service
Reproduction is prohibited without written authorization
14 El.Venizelou 16777
Helliniko, Athens
Greece