




# Climatic Bulletin

January 2019

 **Max  
temperature**

 **Min  
temperature**

 **Mean  
temperature**

 **Precipitation**

 **Sunshine  
duration**

Half of January had very low temperatures and significant snowfalls not only over mountainous areas but also over those of low level over central-northern country. Also at the same period frost conditions prevailed over mainland and strong gale force north winds affected the eastern parts.

In contrast from the middle of the period strong-long lasting rainfalls caused floods mainly over eastern and southern parts.

Meanwhile significant snowfalls covered only mountainous mainland due to the risen temperatures.



ΕΘΝΙΚΗ  
**ΜΕΤΕΩΡΟΛΟΓΙΚΗ**  
ΥΠΗΡΕΣΙΑ

HELLENIC NATIONAL METEOROLOGICAL SERVICE



# Temperature

### First 10-day period

More specific (varied) :

**Minimum:**

from  $-23^{\circ}\text{C}$  to  $6^{\circ}\text{C}$  over north mainland,  
 from  $-10^{\circ}\text{C}$  to  $9^{\circ}\text{C}$  over central mainland,  
 from  $-8^{\circ}\text{C}$  to  $12^{\circ}\text{C}$  over rest parts.

**Maximum:**

from  $-5^{\circ}\text{C}$  to  $11^{\circ}\text{C}$  over north mainland,  
 from  $-1^{\circ}\text{C}$  to  $14^{\circ}\text{C}$  over central mainland,  
 from  $3^{\circ}\text{C}$  to  $16^{\circ}\text{C}$  over rest parts.

### Second 10-day period

More specific (varied) :

**Minimum:**

from  $-18^{\circ}\text{C}$  to  $6^{\circ}\text{C}$  over north mainland,  
 from  $-5^{\circ}\text{C}$  to  $11^{\circ}\text{C}$  over central mainland,  
 from  $-4^{\circ}\text{C}$  to  $13^{\circ}\text{C}$  over rest parts.

**Maximum:**

from  $-7^{\circ}\text{C}$  to  $14^{\circ}\text{C}$  over north mainland,  
 from  $3^{\circ}\text{C}$  to  $17^{\circ}\text{C}$  over central mainland,  
 from  $7^{\circ}\text{C}$  to  $18^{\circ}\text{C}$  over rest parts.

### Third 10-day period

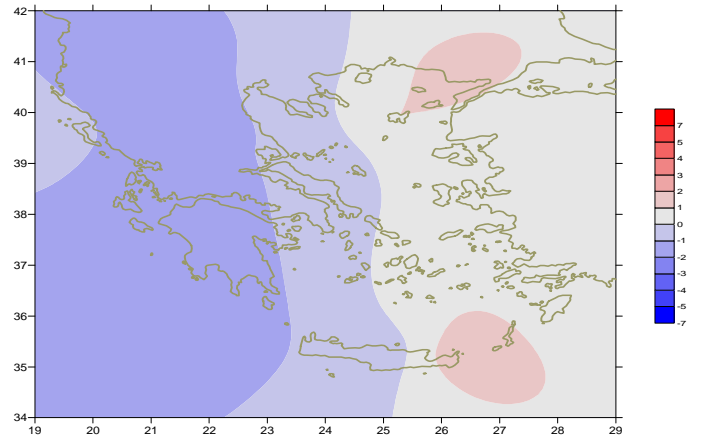
More specific (varied) :

**Minimum:**

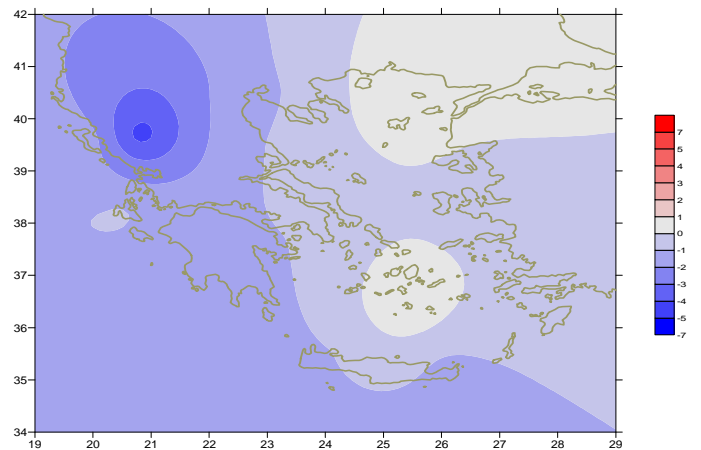
from  $-10^{\circ}\text{C}$  to  $10^{\circ}\text{C}$  over north mainland,  
 from  $0^{\circ}\text{C}$  to  $14^{\circ}\text{C}$  over central mainland,  
 from  $3^{\circ}\text{C}$  to  $14^{\circ}\text{C}$  over rest parts.

**Maximum:**

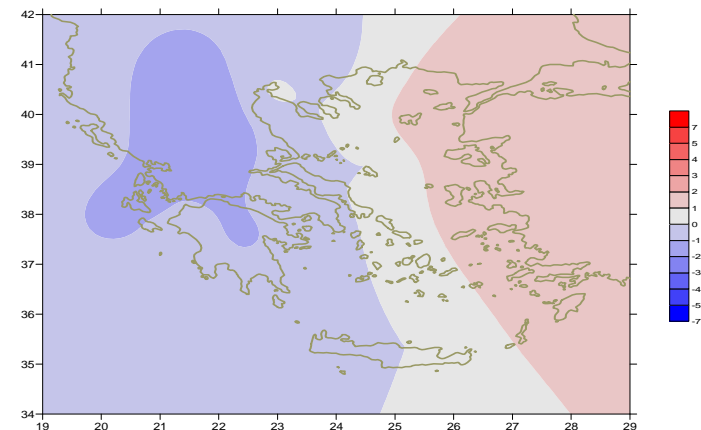
from  $-2^{\circ}\text{C}$  to  $15^{\circ}\text{C}$  over north mainland,  
 from  $-1^{\circ}\text{C}$  to  $16^{\circ}\text{C}$  over central mainland,  
 from  $0^{\circ}\text{C}$  to  $18^{\circ}\text{C}$  over rest parts.



*Deviation of mean temperature from normal values*



*Deviation of maximum temperature from normal values*



*Deviation of minimum temperature from normal values*



## Precipitation

### First 10-day period

Locally large amounts of precipitation.

More specific:

42mm in Astros, 31mm in Tanagra, 35mm in Hellinikon, 43mm in Leonidio, 27mm in Rodos, 28mm in Siros, 31mm in Tinos, 37mm in Tithorea, 41mm in Oreoi, 21mm in Lavrio (1/1), 59mm in Ioannina, 28mm in Andravida, 30mm in Tripoli, 28mm in Antirio (8/1), 32mm in Soufli, 25mm in Paros (10/1).

### Second 10-day period

Locally large amounts of precipitation.

More specific:

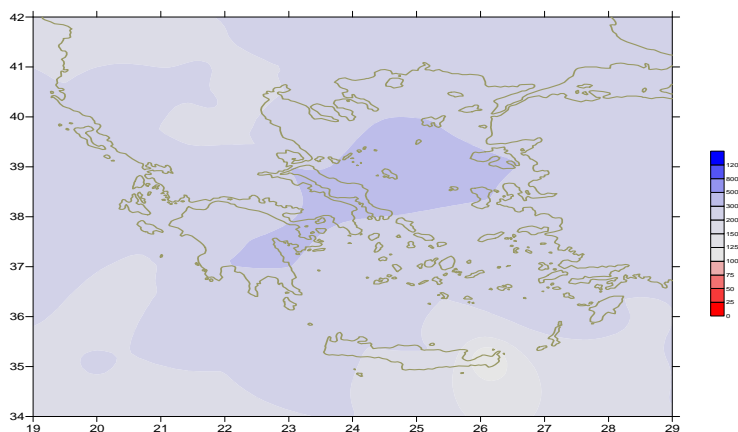
27mm in Kastellorizo (11/1), 25mm in Skiros, 25mm in Karistos, 26mm in Elefsina (12/1), 34mm in Astpalea, 79mm in Souda, 34mm in Kastelli, 37mm in Paros (13/1), 39mm in Samos, 36mm in Leonidio, 48mm in Milos, 31mm in Siros (15/1), 24mm in Argostoli (19/1), 46mm in Kerkira, 30mm in Kalamata (20/1).

### Third 10-day period

Locally large amounts of precipitation.

More specific:

38mm in Kos, 74mm in Rodos, 36mm in Timbaki (21/1), 33mm in Preveza (22/1), 44mm in Konitsa, 37mm in Kerkira, 35mm in Ioannina (23/1), 34mm in Chios, 21mm in Mikonos (24/1), 40mm in Edessa, 142mm in Chrissoupoli, 59mm in Tripoli, 35mm in Tatoi, 46mm in Kalamata, 51mm in Leonidio, 41mm in Nat.Kolimbitirio, 57mm in Fourni, 53mm in Doxato (25/1), 30mm in Mitilini (26/1), 34mm in Preveza, 43mm in Adravida, 51mm in Zakynthos, 36mm in Antirio (29/1).



*Deviation of monthly precipitation height  
from normal values (%)*

TABLE OF MEAN VALUES

STATION	Longitude	Latitude	Tmean	TX	TN	RR	INST
SERRES	23,53	41,07	3	7,1	-1,1	100	92
FLORINA	21,40	40,78					
KASTORIA	21,27	40,45	-0,2	4,1	-4,3	96	75
TRIKALA_IMATHIAS	22,55	40,60					
THESSALONIKI	22,97	40,52	4,7	7,8	1,5	61	110
CHRYSOUPOLI	24,62	40,92	5,6	8,9	2,3	254	67
ALEXANDROUPOLI	25,95	40,85	6	9,1	2,5	122	76
KOZANI	21,83	40,28	0,1	3,5	-3,1	60	
KERKYRA	19,92	39,62	8,8	12,4	5	328	103
IOANNINA	20,82	39,70	2,6	5,9	-1,3	208	77
PREVEZA	20,76	38,91	8,4	11,3	5,6	245	
TRIKALA_THESSALIAS	21,77	39,52					
LARISA	22,45	39,65	3,7	8,3	-0,7	56	92
LIMNOS	25,23	39,92	8,5	11,2	5,5	175	88
ARTA	21,00	39,17					
AGHIALOS	22,78	39,21	5,4	9,7	1,8	60	123
MYTILINI	26,60	39,05	9,7	11,7	7,9	320	72
VELO	22,77	37,97					
AGRINIO	21,35	38,60					
LAMIA	22,43	38,87					
ANDRAVIDA	21,28	37,92	8,7	12,6	5,2	245	109
SKYROS	24,48	38,96	9,6	11,7	7,4	255	79
ARGOSTOLI	20,50	38,12	10,3	13,5	7,1	261	111
ARAXOS	21,42	38,15	8,8	12,5	5,3	140	122
TANAGRA	23,57	38,33	6,8	11	3,2	146	117
HIOS	26,13	38,35	9,9	12,5	7,5	301	77
PYRGOS	21,42	37,67					
TRIPOLI	22,40	37,52	3,6	8,1	0,3	344	101
TATOI	23,78	38,10	6,9	10,7	3,1	134	
HELLINIKO	23,73	37,90	9,7	12,5	6,6	121	148
ELEYSINA	23,55	38,07	8,8	12,3	5,5	107	
ZAKYNTHOS	20,88	37,75	10	12,9	7,3	286	103
SAMOS	26,92	37,68	10,5	13	8,5	290	
ARGOS	22,75	37,63					
KALAMATA	22,02	37,07	8,6	13,2	5,1	300	110
NAXOS	25,37	37,10					
METHONI	21,70	36,82					
MHLOS	24,43	36,73					
SPATA	23,95	37,95	7,8	11,8	3,7	109	
KOS	27,08	36,80	11,3	13,6	9,2	195	
KYTHIRA	22,98	36,15					
SANTORINI	25,41	36,41	11,9	14,1	9,5	120	117
SOUDA	24,12	35,55	10	13,4	7,2	230	115
RODOS	28,08	36,40	12,3	14,5	10,1	242	97
MYKONOS	25,35	37,43	10,6	12,9	9	170	
HRAKLEIO	25,18	35,33	11,5	14,7	9	163	139
IERAPETRA	25,73	35,02					
SITEIA	26,10	35,21	13,7	14,1	10	86	91
RETHYMNO	24,50	35,36					
TYMPAKI	24,76	35,06					
KASTELI	25,33	35,18	9	11,9	5,6	228	113
KARPATHOS	27,15	35,42	13,5	15,6	11,5	88	
PAROS	25,13	37,02	11,5	13,9	9,3	112	112
SYROS	24,95	37,42					
IKARIA	26,35	37,68					

11,314,58,13617810,214,16,45611,314,57,89612510,713,7820210,5165,88616112,715,410,232137

**TABLE OF DEVIATIONS  
FROM NORMAL VALUES**

STATION	TMEAN ( deviation ) (I)	PRECI (deviation % ) (II)
SERRES	-0.8	283
FLORINA		
THESSALONIKI	-0.3	165
ALEXANDROUPOLI	1.2	202
KOZANI	-1.9	152
KERKYRA	-0.8	249
IOANNINA	-2	160
LARISA	-1.4	189
LIMNOS	1	242
AGHIALOS	-1	125
MYTILINI	0.4	246
AGRINIO		
SKYROS	-0.3	326
ARGOSTOLI	-1.3	224
ARAXOS	-1.3	145
HIOS	0.3	258
HELLINIKO	-0.5	268
ZAKYNTHOS	-1.3	190
SAMOS	0.2	195
KALAMATA	-1.6	265
NAXOS		
METHONI		
SANTORINI	0.6	186
SOUDA	-0.8	162
RODOS	0.6	164
HERAKLIO	-0.5	178
SITIA	1.4	93

(I) deviation of mean temperature from normal values  
 (II) deviation of monthly precipitation height from normal values %.

# Climatic Bulletin

## General Description

Precipitation amounts were higher than normal values everywhere while over west, south and eastern parts of Greece they were higher enough.  
The mean temperature varied lightly lower than normals almost everywhere.

### Climatic Parameters :

- ❖ **Normal Values** : normal values for various parameters (temperature, precipitation, etc) are defined as mean values calculated for 30 years. These normal values are used as basis and represent the mean situation. They can be specified in 10 daily, monthly, seasonally and yearly level and are used for the trend comparison of 10 days, month, season or year as: rainy decameron, mild winter, cool August etc.

### Measurement :

- ❖ **Precipitation**  
1 mm = 1 litre/m<sup>2</sup>

### Table Legend :

Tmean : Mean Temperature  
TN : Minimum Temperature  
TX : Maximum Temperature  
RR : Precipitation height(mm)  
INST : Sun Duration (hours)

### UTC hours (Universal Time Coordinates) in Greece :

- ❖ Winter : UTC hour = local hour - 2
- ❖ Summer : UTC hour = local hour - 3

© Hellenic National Meteorological Service  
Reproduction is prohibited without written authorization  
14 El.Venizelou 16777  
Helliniko, Athens  
Greece