




Climatic Bulletin

September 2019

 **Max
temperature**

 **Min
temperature**

 **Mean
temperature**

 **Precipitation**

 **Sunshine
duration**

September had two main characteristics. Firstly the long duration of gale force north winds till the middle of month and secondly the strong rainfalls and thunderstorms which affected locally the mainland from 19th till the end. Specifically significant floods recorded over western parts of Thessaloniki while strong hail caused damages over eastern parts of Trikala prefecture (19-20/9). Also strong thunderstorms caused severe damages over northwest Peloponnese(24/9).



ΕΘΝΙΚΗ
ΜΕΤΕΩΡΟΛΟΓΙΚΗ
ΥΠΗΡΕΣΙΑ

HELLENIC NATIONAL METEOROLOGICAL SERVICE



Temperature

First 10-day period

More specific (varied) :

Minimum:

from 11°C to 23°C over north mainland,
 from 14°C to 25°C over central mainland,
 from 20°C to 25°C over rest parts.

Maximum:

from 27°C to 36°C over north mainland,
 from 27°C to 36°C over central mainland,
 from 25°C to 35°C over rest parts.

Second 10-day period

More specific (varied) :

Minimum:

from 6°C to 22°C over north mainland,
 from 10°C to 24°C over central mainland,
 from 14°C to 25°C over rest parts.

Maximum:

from 25°C to 36°C over north mainland,
 from 25°C to 34°C over central mainland,
 from 24°C to 31°C over rest parts.

Third 10-day period

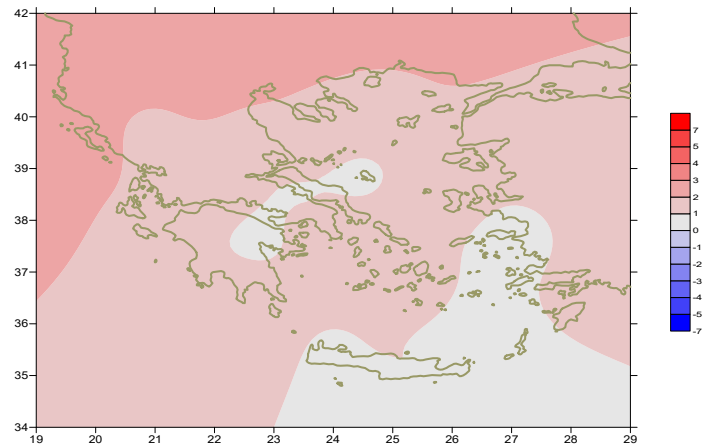
More specific (varied) :

Minimum:

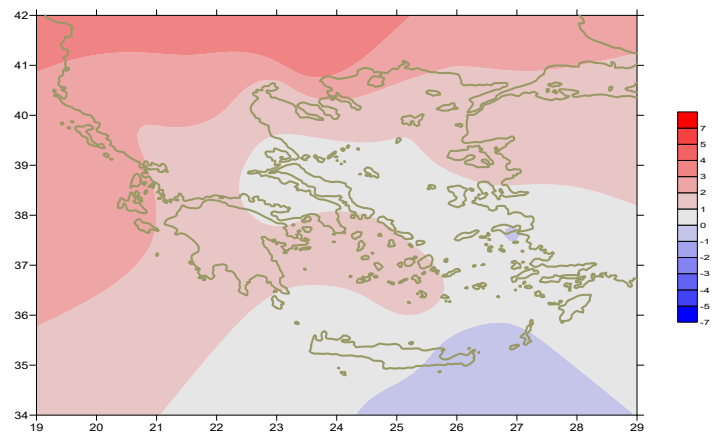
from 1°C to 19°C over north mainland,
 from 7°C to 20°C over central mainland,
 from 14°C to 23°C over rest parts.

Maximum:

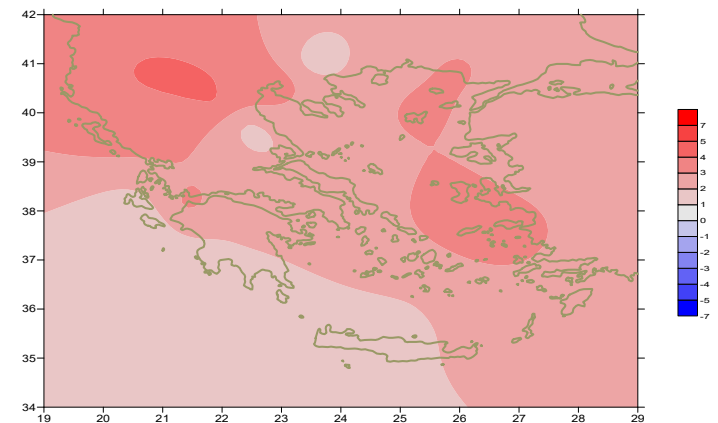
from 21°C to 30°C over north mainland,
 from 20°C to 34°C over central mainland,
 from 25°C to 30°C over rest parts.



Deviation of mean temperature from normal values



Deviation of maximum temperature from normal values



Deviation of minimum temperature from normal values



P r e c i p i t a t i o n

First 10-day period

Locally low amounts of precipitation.

More specific:

6mm in Ioannina (2/9),
9mm in Florina, 3mm in Kozani, 6mm in Kastoria (7/9),
7mm in Zakynthos (9/9),
3mm in Konitsa, 2mm in Kastoria (10/9).

Second 10-day period

Locally significant amounts of precipitation.

More specific:

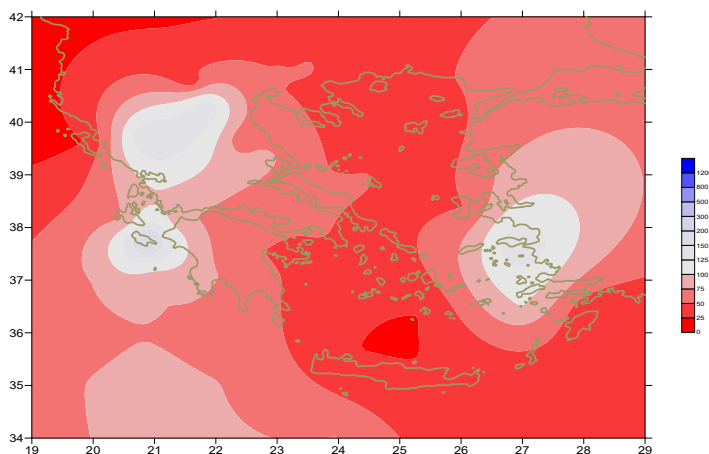
9mm in Ikaria, 12mm in Leros, 19mm in Kos (13/9),
16mm in Kozani (19/9),
7mm in Ormenio, 14mm in Serres, 23mm in Preveza,
14mm in Konitsa, 11mm in Skiathos, 24mm in Leonidio (20/9).

Third 10-day period

Locally significant amounts of precipitation.

More specific:

16mm in Doxato, 31mm in Serres, 9mm in Ikaria, 12mm in Leros,
61mm in Ioannina, 16mm in Argostoli, 37mm in Zakynthos,
39mm in Adravida, 14mm in Araxos, 11mm in Kalamata,
12mm in Antirio, 12mm in Agchialos (24/9),
24mm in Kavala, 10mm in Chios, 20mm in Samos, 8mm in Mitilini (25/9).



**Deviation of monthly precipitation height
from normal values (%)**

TABLE OF MEAN VALUES

STATION	Longitude	Latitude	Tmean	TX	TN	RR	INST
SERRES	23,53	41,07	23,9	31,9	15,3	46	221
FLORINA	21,40	40,78					
KASTORIA	21,27	40,45	20,7	27,9	11,9	17	241
TRIKALA_IMATHIAS	22,55	40,60					
THESSALONIKI	22,97	40,52	24	28,7	17,5	10	268
CHRYSOUPOLI	24,62	40,92	22,8	27,7	16,6	30	292
ALEXANDROUPOLI	25,95	40,85	23,2	28,3	15,8	10	284
KOZANI	21,83	40,28	21,9	27,9	14	34	
KERKYRA	19,92	39,62	25,5	30,3	20,1	5	261
IOANNINA	20,82	39,70	21,8	29	13,3	76	225
PREVEZA	20,76	38,91	25,3	29,4	19,7	28	
TRIKALA_THESSALIAS	21,77	39,52					
LARISA	22,45	39,65	23,5	29,9	15,2	13	236
LIMNOS	25,23	39,92	22,7	26,3	19,1	3	294
ARTA	21,00	39,17					
AGHIALOS	22,78	39,21	23,3	28,1	16,8	25	276
MYTILINI	26,60	39,05	24,2	28,4	19,4	8	318
VELO	22,77	37,97					
AGRINIO	21,35	38,60					
LAMIA	22,43	38,87					
ANDRAVIDA	21,28	37,92	24,6	29,8	17,9	46	284
SKYROS	24,48	38,96	23	25,4	20,2	8	278
ARGOSTOLI	20,50	38,12	25,3	29,3	20,6	18	291
ARAXOS	21,42	38,15	25,4	29,9	19	15	282
TANAGRA	23,57	38,33	23,5	28,3	16,4	6	287
HIOS	26,13	38,35	23,9	26,8	19,4	11	302
PYRGOS	21,42	37,67					
TRIPOLI	22,40	37,52	20,9	27,7	12,1	6	244
TATOI	23,78	38,10	23,4	28,1	17,6	6	
HELLINIKO	23,73	37,90	25,5	29,6	21,1	4	319
ELEYSINA	23,55	38,07	25,8	30	20,4	6	
ZAKYNTHOS	20,88	37,75	25,5	29,7	19,9	48	293
SAMOS	26,92	37,68	25	28,5	21,2	25	
ARGOS	22,75	37,63					
KALAMATA	22,02	37,07	24,9	30,2	18,2	21	296
NAXOS	25,37	37,10					
METHONI	21,70	36,82					
MHLOS	24,43	36,73					
SPATA	23,95	37,95	28,5	28,1	18,3		
KOS	27,08	36,80	23,7	27	21	20	
KYTHIRA	22,98	36,15					
SANTORINI	25,41	36,41	23,9	27,1	21,2	0	312
SOUDA	24,12	35,55	23,9	27,5	19,8	0	306
RODOS	28,08	36,40	25,9	29	23	0	309
MYKONOS	25,35	37,43	23	26,1	20,1	0	
HRAKLEIO	25,18	35,33	24,5	26,9	20,7	0	311
IERAPETRA	25,73	35,02					
SITEIA	26,10	35,21	23,7	26	22,3	0	256
RETHYMNO	24,50	35,36					
TYMPAKI	24,76	35,06					
KASTEI	25,33	35,18	22,1	26,2	18,1	3	289
KARPATOS	27,15	35,42	24,2	27,2	22,2	0	
PAROS	25,13	37,02	23,1	25,6	20,1	0	291
SYROS	24,95	37,42	23,1	23,8	21,2	0	301
IKARIA	26,35	37,68					

**TABLE OF DEVIATIONS
FROM NORMAL VALUES**

STATION	TMEAN (deviation) (I)	PRECI (deviation %) (II)
SERRES	2.3	220
FLORINA		
THESSALONIKI	2.2	38
ALEXANDROUPOLI	2.2	32
KOZANI	2.4	104
KERKYRA	2.8	7
IOANNINA	1.5	138
LARISA	1.5	44
LIMNOS	1.3	15
AGHIALOS	1.1	80
MYTILINI	1.2	75
AGRINIO		
SKYROS	0.9	45
ARGOSTOLI	1.8	60
ARAXOS	1.9	67
HIOS	1.3	13
HELLINIKO	1.2	41
ZAKYNTHOS	1.7	189
SAMOS	0.7	110
KALAMATA	1.6	75
NAXOS		
METHONI		
SANTORINI	1.5	0
SOUDA	0.2	0
RODOS	0.7	0
HERAKLIO	0.5	0
SITIA	-0.7	0

(I) deviation of mean temperature from normal values
 (II) deviation of monthly precipitation height from normal values %.

Climatic Bulletin

General Description

Precipitation amounts were lower enough than normal values over most parts.
The mean temperature varied higher than normals mainly over Ionian area and over west and north mainland.

Climatic Parameters :

- ❖ **Normal Values** : normal values for various parameters (temperature, precipitation, etc) are defined as mean values calculated for 30 years. These normal values are used as basis and represent the mean situation. They can be specified in 10 daily, monthly, seasonally and yearly level and are used for the trend comparison of 10 days, month, season or year as: rainy decameron, mild winter, cool August etc.

Measurement :

- ❖ **Precipitation**
1 mm = 1 litre/m²

Table Legend :

Tmean : Mean Temperature
TN : Minimum Temperature
TX : Maximum Temperature
RR : Precipitation height(mm)
INST : Sun Duration (hours)

UTC hours (Universal Time Coordinates) in Greece :

- ❖ Winter : UTC hour = local hour - 2
- ❖ Summer : UTC hour = local hour - 3

© Hellenic National Meteorological Service
Reproduction is prohibited without written authorization
14 El.Venizelou 16777
Helliniko, Athens
Greece