




Climatic Bulletin

October 2019

 **Max
temperature**

 **Min
temperature**

 **Mean
temperature**

 **Precipitation**

 **Sunshine
duration**

October was a warm month in general, with a few foggy days and some other windy ones. Meanwhile strong rainfalls and thunderstorms recorded during the first ten days and the last day of the month as well. Specifically the thunderstorms occurred between 3rd and 4th of October caused severe local damages due to the large size of hail stones.



Temperature

First 10-day period

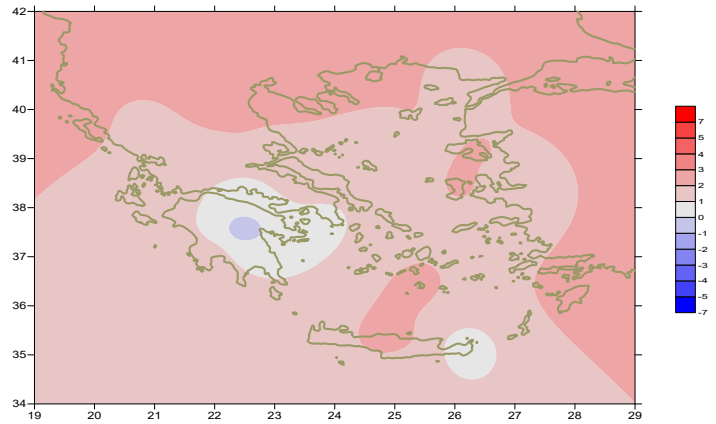
More specific (varied) :

Minimum:

from 2°C to 20°C over north mainland,
 from 10°C to 22°C over central mainland,
 from 12°C to 23°C over rest parts.

Maximum:

from 16°C to 33°C over north mainland,
 from 17°C to 33°C over central mainland,
 from 21°C to 33°C over rest parts.



Deviation of mean temperature from normal values

Second 10-day period

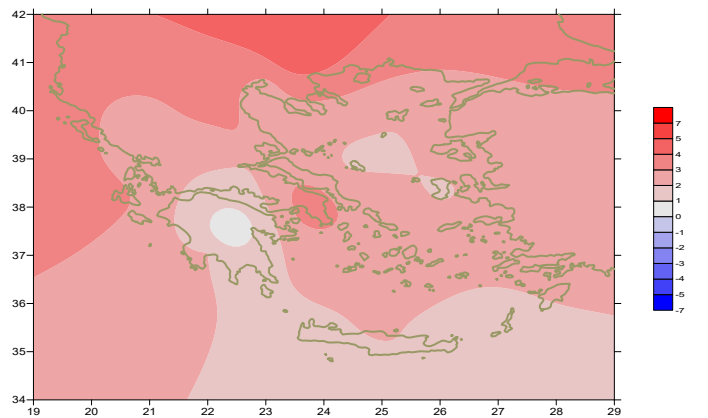
More specific (varied) :

Minimum:

from 4°C to 18°C over north mainland,
 from 9°C to 21°C over central mainland,
 from 13°C to 23°C over rest parts.

Maximum:

from 22°C to 28°C over north mainland,
 from 23°C to 30°C over central mainland,
 from 22°C to 30°C over rest parts.



Deviation of maximum temperature from normal values

Third 10-day period

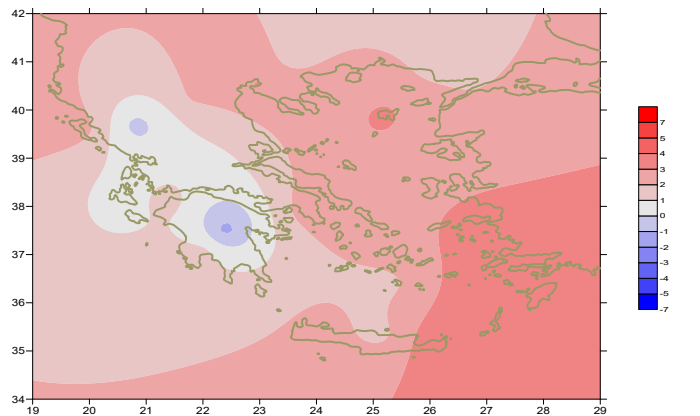
More specific (varied) :

Minimum:

from -3°C to 17°C over north mainland,
 from 5°C to 21°C over central mainland,
 from 9°C to 22°C over rest parts.

Maximum:

from 11°C to 30°C over north mainland,
 from 18°C to 29°C over central mainland,
 from 15°C to 30°C over rest parts.



Deviation of minimum temperature from normal values



P r e c i p i t a t i o n

First 10-day period

Locally very high amounts of precipitation.

More specific:

31mm in Preveza, 24mm in Ioannina, 28mm in Konitsa, 32mm in Kerkira, 60mm in Othonoi, 22mm in Adravida, 27mm in Araxos, 18mm in Antirio, 38mm in Mesologi (3/10), 66mm in Alexandroupoli, 28mm in Kavala, 21mm in Thessaloniki, 20mm in Kastoria, 42mm in Kozani, 25mm in Oreoi, 30mm in Tripoli (4/10), 37mm in Alexandroupoli (5/10), 27mm in Lamia, 18mm in Astipalea, 22mm in Spata (7/10), 7mm in Ormenio, 14mm in Serres, 23mm in Preveza, 26mm in Aghialos, 29mm in Skiathos, 20mm in Paros, 32mm in Siros, 30mm in Timbaki, 22mm in Mitilini, 35mm in Rodos (8/10).

Second 10-day period

Locally small amounts of precipitation.

More specific:

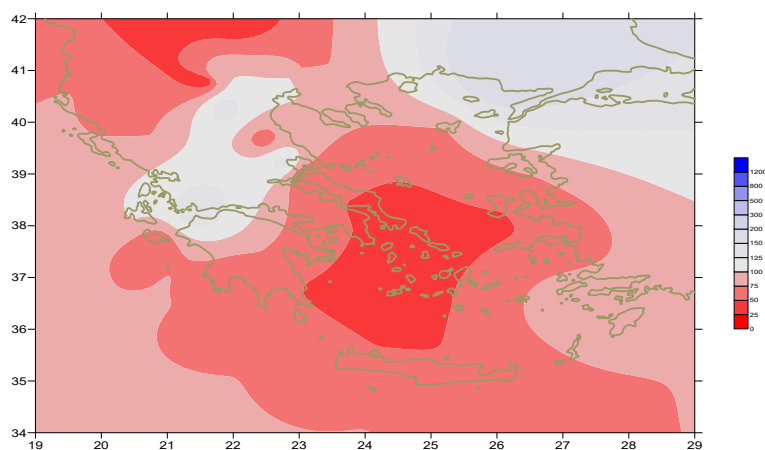
15mm in Othonoi (11/10), 10mm in Kastelorizo (16/10).

Third 10-day period

Locally significant amounts of precipitation.

More specific:

25mm in Zakynthos, 27mm in Othonoi, 23mm in Adravida, 21mm in Araxos, 38mm in Mesologi, 12mm in Karistos, 45mm in Spata, 27mm in Tatoi, 22mm in Elefsina, 22mm in Shinias (31/10).



*Deviation of monthly precipitation height
from normal values (%)*

TABLE OF MEAN VALUES

STATION	Longitude	Latitude	Tmean	TX	TN	RR	INST
SERRES	23,53	41,07	17,9	25,9	10,9	31	218
FLORINA	21,40	40,78					
KASTORIA	21,27	40,45	15,4	23,8	7,2	38	216
TRIKALA_IMATHIAS	22,55	40,60					
THESSALONIKI	22,97	40,52	18,7	23,8	13,7	35	222
CHRYSOUPOLI	24,62	40,92	17,6	22,8	12,7	32	228
ALEXANDROUPOLI	25,95	40,85	17,4	23,2	11,9	95	221
KOZANI	21,83	40,28	16,1	22,4	10,1	56	
KERKYRA	19,92	39,62	20,8	26,4	15,8	90	239
IOANNINA	20,82	39,70	16,3	23,7	8,1	73	173
PREVEZA	20,76	38,91	21	25,4	16,8	103	
TRIKALA_THESSALIAS	21,77	39,52					
LARISA	22,45	39,65	18,3	25,2	11,2	24	168
LIMNOS	25,23	39,92	18,6	22,2	15,6	25	221
ARTA	21,00	39,17					
AGHIALOS	22,78	39,21	18,1	23,7	13,4	74	212
MYTILINI	26,60	39,05	20,3	24,1	16,6	30	247
VELO	22,77	37,97					
AGRINIO	21,35	38,60					
LAMIA	22,43	38,87					
ANDRAVIDA	21,28	37,92	19,7	25,8	13,9	96	236
SKYROS	24,48	38,96	19,6	22,3	17,5	18	232
ARGOSTOLI	20,50	38,12	21,1	25,9	16,5	86	252
ARAXOS	21,42	38,15	20,3	25,5	15,3	116	242
TANAGRA	23,57	38,33	18,9	25,4	13,2	11	225
HIOS	26,13	38,35	20,1	23,4	16	11	237
PYRGOS	21,42	37,67					
TRIPOLI	22,40	37,52	13,9	20,3	6,8	47	225
TATOI	23,78	38,10	19,8	25,6	14,2	28	
HELLINIKO	23,73	37,90	21,9	26,5	17,9	22	256
ELEYSINA	23,55	38,07	22	26,5	17,6	31	
ZAKYNTHOS	20,88	37,75	21	25,6	16,6	60	253
SAMOS	26,92	37,68	22	25,4	18,6	5	
ARGOS	22,75	37,63					
KALAMATA	22,02	37,07	20,3	26,6	14,4	25	251
NAXOS	25,37	37,10					
METHONI	21,70	36,82					
MHLOS	24,43	36,73					
SPATA	23,95	37,95	20,7	24,8	14,4		
KOS	27,08	36,80	22	25,5	19,7	3	
KYTHIRA	22,98	36,15					
SANTORINI	25,41	36,41	21,2	24,3	18,3	8	250
SOUDA	24,12	35,55	20,9	24,9	17,3	15	220
RODOS	28,08	36,40	23,4	26,6	20,6	51	261
MYKONOS	25,35	37,43	20,8	23,8	18,5	10	
HRAKLEIO	25,18	35,33	22,1	25,2	18,3	14	234
IERAPETRA	25,73	35,02					
SITEIA	26,10	35,21	21,8	24,5	20,5	7	189
RETHYMNO	24,50	35,36					
TYMPAKI	24,76	35,06					
KASTELI	25,33	35,18	19,7	24,9	15,4	11	227
KARPATOS	27,15	35,42	22,9	25,8	20,6	0	
PAROS	25,13	37,02	20,9	23,9	18,4	21	249
SYROS	24,95	37,42	20,9	23,6	19,1	38	246
IKARIA	26,35	37,68					

11,314,58,13617810,214,16,45611,314,57,89612510,713,7820210,5165,88616112,715,410,232137

**TABLE OF DEVIATIONS
FROM NORMAL VALUES**

STATION	TMEAN (deviation) (I)	PRECI (deviation %) (II)
SERRES	2.5	71
FLORINA		
THESSALONIKI	2.6	86
ALEXANDROUPOLI	1.9	188
KOZANI	2.7	111
KERKYRA	2.4	61
IOANNINA	1.4	76
LARISA	2.2	51
LIMNOS	2	70
AGHIALOS	1.4	114
MYTILINI	2	79
AGRINIO		
SKYROS	1.5	47
ARGOSTOLI	1.4	80
ARAXOS	1.4	136
HIOS	2.1	30
HELLINIKO	2.6	46
ZAKYNTHOS	1.4	41
SAMOS	2.8	17
KALAMATA	1.5	25
NAXOS		
METHONI		
SANTORINI	2.3	28
SOUDA	1.9	19
RODOS	2.8	79
HERAKLIO	2.2	20
SITIA	1.7	12

(I) deviation of mean temperature from normal values
 (II) deviation of monthly precipitation height from normal values %.

Climatic Bulletin

General Description

Precipitation amounts were lower enough than normal values over most parts.
The mean temperature varied higher than normals everywhere.

Climatic Parameters :

- ❖ **Normal Values** : normal values for various parameters (temperature, precipitation, etc) are defined as mean values calculated for 30 years. These normal values are used as basis and represent the mean situation. They can be specified in 10 daily, monthly, seasonally and yearly level and are used for the trend comparison of 10 days, month, season or year as: rainy decameron, mild winter, cool August etc.

Measurement :

- ❖ **Precipitation**
1 mm = 1 litre/m²

Table Legend :

Tmean : Mean Temperature
TN : Minimum Temperature
TX : Maximum Temperature
RR : Precipitation height(mm)
INST : Sun Duration (hours)

UTC hours (Universal Time Coordinates) in Greece :

- ❖ Winter : UTC hour = local hour - 2
- ❖ Summer : UTC hour = local hour - 3

© Hellenic National Meteorological Service
Reproduction is prohibited without written authorization
14 El.Venizelou 16777
Helliniko, Athens
Greece