




Climatic Bulletin

January 2020

 **Max
temperature**

 **Min
temperature**

 **Mean
temperature**

 **Precipitation**

 **Sunshine
duration**

January had a few days with early/late frost but also with sky clear conditions while only few snowfalls recorded over most mountains. In contrast a large amount of snow covered the mountainous areas of Evia, eastern Sterea , northern Attica and Crete. Also north strong gale force winds prevailed over Greek seas for a long period.



Temperature

First 10-day period

More specific (varied) :

Minimum:

from -6°C to 9°C over north mainland,
 from -2°C to 13°C over central mainland,
 from 5°C to 17°C over rest parts.

Maximum:

from 2°C to 16°C over north mainland,
 from 0°C to 23°C over central mainland,
 from 8°C to 22°C over rest parts.

Second 10-day period

More specific (varied) :

Minimum:

from -5°C to 12°C over north mainland,
 from -1°C to 15°C over central mainland,
 from 7°C to 16°C over rest parts.

Maximum:

from 2°C to 19°C over north mainland,
 from 3°C to 22°C over central mainland,
 from 15°C to 22°C over rest parts.

Third 10-day period

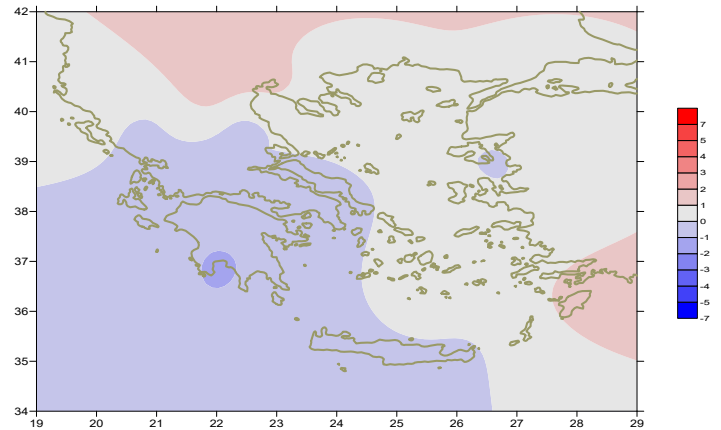
More specific (varied) :

Minimum:

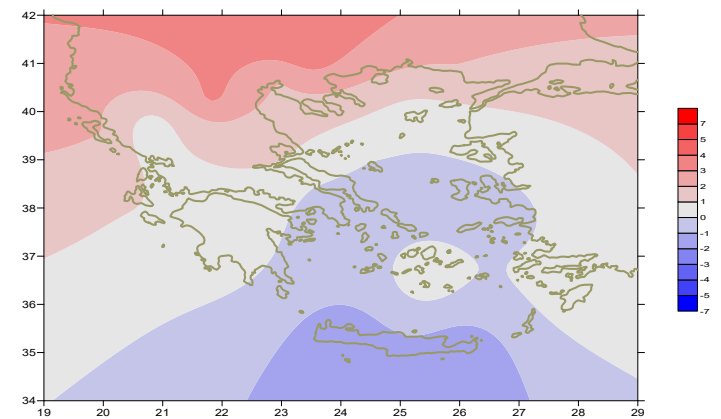
from -8°C to 15°C over north mainland,
 from -5°C to 17°C over central mainland,
 from 5°C to 17°C over rest parts.

Maximum:

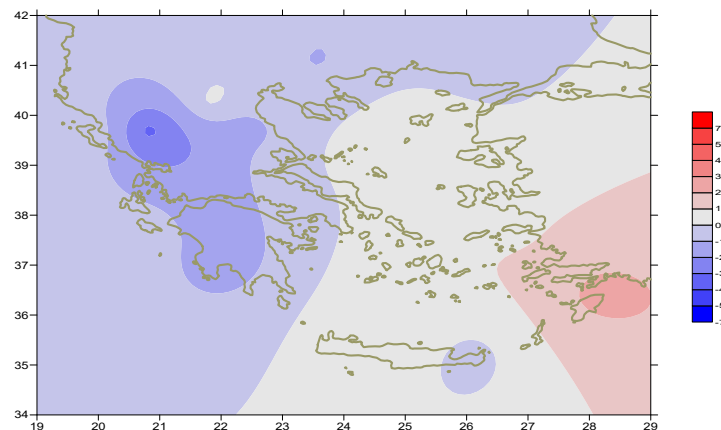
from 0°C to 20°C over north mainland,
 from 0°C to 22°C over central mainland,
 from 8°C to 20°C over rest parts.



Deviation of mean temperature from normal values



Deviation of maximum temperature from normal values



Deviation of minimum temperature from normal values



Precipitation

First 10-day period

Locally high amounts of precipitation (snow) over Evia, Eastern Sterea, Crete.
More specific:

17mm in Karistos, 13mm in Iraklion, 22mm in Souda, 33mm in Kasteli (2/1),
28mm in Sitia, 40mm in Kasteli, 16mm in Kastelorizo (3/10),
16mm in Oreoi, 24mm in Kimi, 20mm in Limnos (5/1),
72mm in Karistos, 37mm in Skiros, 40mm in Tanagra, 25mm in Tinos,
15mm in Mikonos, 27mm in Santorini, 31mm in Iraklion, 105mm in Souda,
16mm in Paleochora, 32mm in Kasteli, 17mm in Gavdos, 19mm in Chios,
15mm in Samos, 19mm in Leros, 18mm in Spata, 34mm in Tatoi, 27mm in Elefsina,
41mm in Kotroni, 42mm in Shinias (6/1),
34mm in Karistos, 34mm in Milos, 21mm in Souda, 54mm in Kasteli,
33mm in Karpathos, 19mm in Tatoi, 16mm in Lavrio (7/1).

Second 10-day period

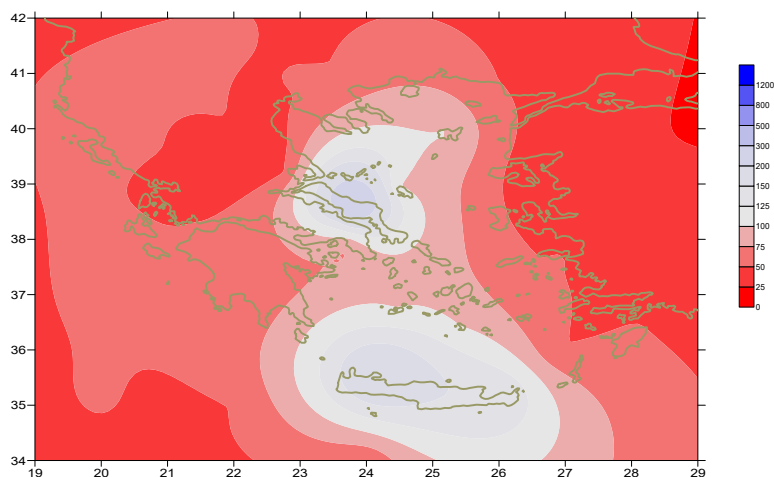
Local significant precipitation only for few days.
More specific:

7mm in Kerkira (11/1), 11mm in Oreoi (13/1),
8mm in Sitia, 36mm in Kasteli, 14mm in Karpathos (16/1),
10mm in Souda (17/1).

Third 10-day period

Local significant precipitation at the end.
More specific:

22mm in Soufli, 12mm in Preveza, 15mm in Ioannina,
10mm in Konitsa, 10mm in Araxos, 13mm in Kalamata, 11mm in Antirio,
11mm in Messologi, 12mm in Tripoli, 11mm in Rafina (27/1),
11mm in Leros, 11mm in Kos (28/2),
21mm in Ioannina (29/1), 15mm in Rodos (30/1).



Deviation of monthly precipitation height
from normal values (%)

TABLE OF MEAN VALUES

						4	
	21,40						
					-3,4		146
						0,1	
				11,1		3	
		40,28			-1,1		
			9,9		4,9		
						42	
				14,3		13	
							147
			7,9		4,8		
				12,2			
				12,2		12	
				14,7			
				12,1			
							186
			7,1		2,9		109
			9,8		7		
				11,3		66	
							174
			9,1		5,6		
			10,9				
				13			
				15,9		18	
				13,5		43	
							140
			10,4		8,3		109
			13,1				
				12,9		32	
				14,2		92	
	25,73						
				11,7		239	
							143

11,314,58,13617810,214,16,45611,314,57,89612510,713,7820210,5165,88616112,715,410,232137

**TABLE OF DEVIATIONS
FROM NORMAL VALUES**

STATION	TMEAN (deviation) (I)	PRECI (deviation %) (II)
SERRES	0.8	11
FLORINA		
THESSALONIKI	1.2	-
ALEXANDROUPOLI	0.9	30
KOZANI	1.4	5
KERKYRA	0.3	15
IOANNINA	-0.2	32
LARISA	-0.4	3
LIMNOS	0.4	62
AGHIALOS	0	17
MYTILINI	-0.1	9
AGRINIO		
SKYROS	0.1	88
ARGOSTOLI	-0.2	13
ARAXOS	-0.2	19
HIOS	0.2	27
HELLINIKO	-0.4	58
ZAKYNTHOS	-0.4	15
SAMOS	0	30
KALAMATA	-1.1	16
NAXOS		
METHONI		
SANTORINI	0.8	78
SOUDA	-0.4	134
RODOS	1.4	28
HERAKLIO	-0.1	101
SITIA		

(I) deviation of mean temperature from normal values
 (II) deviation of monthly precipitation height from normal values %.

Climatic Bulletin

General Description

Precipitation amounts were lower than normal values over central and northern parts of Greece but they were higher over Evia, eastern Sterea and Crete (mainly over mountains). The mean temperature varied close to normals everywhere.

Climatic Parameters :

- ❖ **Normal Values** : normal values for various parameters (temperature, precipitation, etc) are defined as mean values calculated for 30 years. These normal values are used as basis and represent the mean situation. They can be specified in 10 daily, monthly, seasonally and yearly level and are used for the trend comparison of 10 days, month, season or year as: rainy decameron, mild winter, cool August etc.

Measurement :

- ❖ **Precipitation**
1 mm = 1 litre/m²

Table Legend :

Tmean : Mean Temperature
 TN : Minimum Temperature
 TX : Maximum Temperature
 RR : Precipitation height(mm)
 INST : Sun Duration (hours)

UTC hours (Universal Time Coordinates) in Greece :

- ❖ Winter : UTC hour = local hour - 2
- ❖ Summer : UTC hour = local hour - 3

© Hellenic National Meteorological Service
 Reproduction is prohibited without written authorization
 14 El.Venizelou 16777
 Helliniko, Athens
 Greece