




Climatic Bulletin

July 2020

 **Max
temperature**

 **Min
temperature**

 **Mean
temperature**

 **Precipitation**

 **Sunshine
duration**

July started with high values of temperature and ended with very high ones (30-31/7). In the meantime relatively low temperatures recorded while gale force north winds prevailed. In parallel significant rainfalls and thunderstorms affected the Greek mainland and the mountainous parts of Crete.



Temperature

First 10-day period

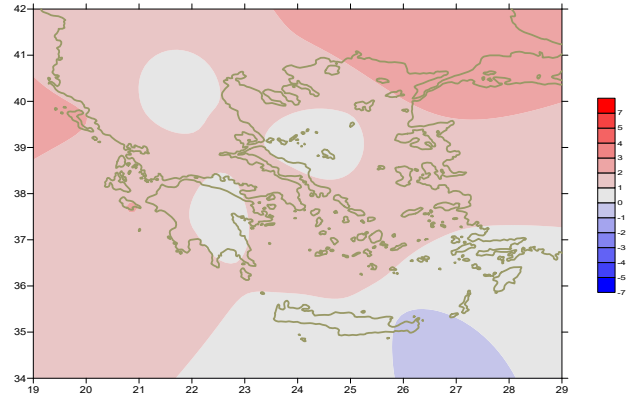
More specific (varied) :

Minimum:

from 13°C to 26°C over north mainland,
 from 17°C to 25°C over central mainland,
 from 18°C to 27°C over rest parts.

Maximum:

from 29°C to 37°C over north mainland,
 from 29°C to 37°C over central mainland,
 from 28°C to 38°C over rest parts.



Deviation of mean temperature from normal values

Second 10-day period

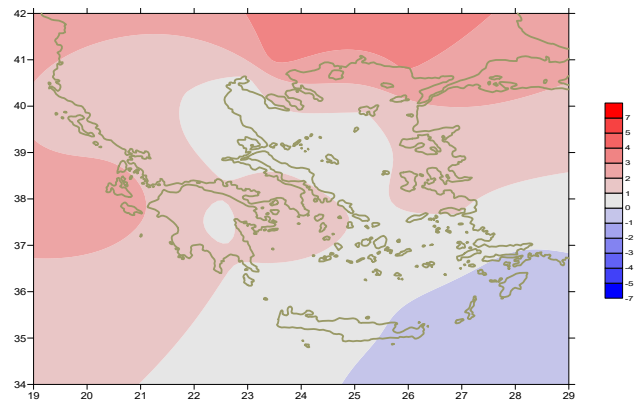
More specific (varied) :

Minimum:

from 9°C to 22°C over north mainland,
 from 15°C to 25°C over central mainland,
 from 14°C to 25°C over rest parts.

Maximum:

from 27°C to 35°C over north mainland,
 from 27°C to 34°C over central mainland,
 from 26°C to 37°C over rest parts.



Deviation of maximum temperature from normal values

Third 10-day period

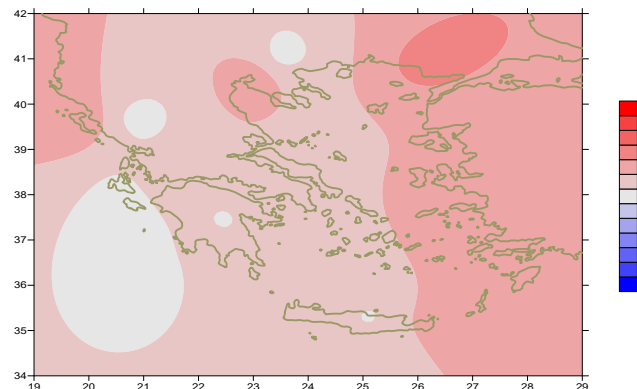
More specific (varied) :

Minimum:

from 11°C to 24°C over north mainland,
 from 16°C to 26°C over central mainland,
 from 13°C to 25°C over rest parts.

Maximum:

from 29°C to 41.6°C over north mainland,
 from 29°C to 40°C over central mainland,
 from 28°C to 40.5°C over rest parts.



Deviation of minimum temperature from normal values



Precipitation

First 10-day period

Locally remarkable amounts of precipitation.

More specific:

17mm in Serres (3/7), 20mm in Kastoria (4/7),
 32mm in Florina, 23mm in Preveza, 28mm in Ioannina,
 28mm in Desfina, 53mm in Tithorea (5/7),
 25mm in Florina, 23mm in Kastoria, 37mm in Kozani, 16mm in Kalamata,
 42mm in Kranea, 34mm in Tripoli, 10mm in Astros (6/7),
 12mm in Kozani, 6mm in Preveza, 10mm in Ioannina,
 8mm in Argostoli, 9mm in Antirio, 16mm in Kasteli, 19mm in Hellinikon (7/7).
 15mm in Limnos (8/7).

Second 10-day period

Temporarily remarkable amounts of precipitation over north parts.

More specific:

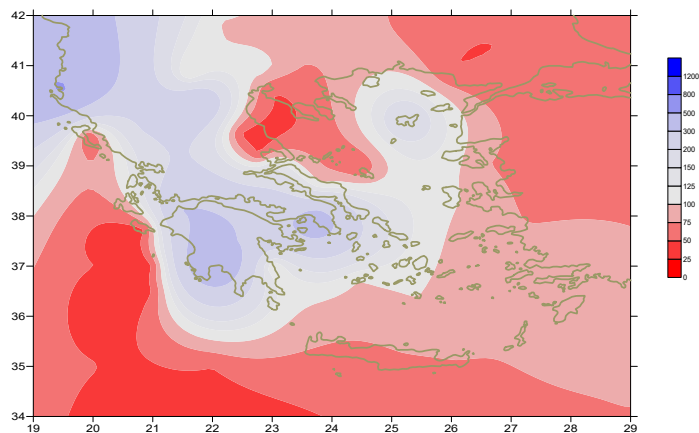
11mm in Konitsa, 11mm in Kalamata (14/7),
 2mm in Kastoria, 2mm in Florina (17/7),
 20mm in Florina, 10mm in Edessa, 17mm in Kozani (18/7).

Third 10-day period

Low precipitation in general.

More specific:

1mm in Naxos (21/7), 4mm in Tripoli (25/7),
 2mm in Doxato, 2mm in Serres (26/7),
 8mm in Doxato, 6mm in Xanthi (27/7).



**Deviation of monthly precipitation height
from normal values (%)**

TABLE OF MEAN VALUES

STATION	Longitude	Latitude	Tmean	TX	TN	RR	INST
RRES	23,53	41,07	27,9	35,4	18,9	19	315
FLORINA	21,40	40,78					
KASTORIA	21,27	40,45	24,2	30,6	15,2	54	314
TRIKALA_IMATHIAS	22,55	40,60					
THESSALONIKI	22,97	40,52	27,9	32,1	21,5	2	363
CHRYSOUPOLI	24,62	40,92	27,1	30,9	20,4	0	351
ALEXANDROUPOLI	25,95	40,85	28,5	33,2	20,8	0	392
KOZANI	21,83	40,28	24,3	30,3	16,9	103	
KERKYRA	19,92	39,62	28,5	32,6	21,3		338
IOANNINA	20,82	39,70	26	32,6	15,3	44	353
PREVEZA	20,76	38,91	26,4	30,3	20,6	38	
TRIKALA_THESSALIAS	21,77	39,52					
LARISA	22,45	39,65	28,2	33,5	19,4	3	321
LIMNOS	25,23	39,92	26,7	30	21,9	15	392
ARTA	21,00	39,17					
AGHIALOS	22,78	39,21	27,8	31,7	20,3		349
MYTILINI	26,60	39,05	28,1	31,6	23,6	0	388
VELO	22,77	37,97					
AGRINIO	21,35	38,60					
LAMIA	22,43	38,87					
ANDRAVIDA	21,28	37,92	27,1	32,2	19,2	1	394
SKYROS	24,48	38,96	25,6	27,7	22,5	0	369
ARGOSTOLI	20,50	38,12	27	31	21,3	10	388
ARAXOS	21,42	38,15	28,2	32,8	20,6	12	375
TANAGRA	23,57	38,33					
HIOS	26,13	38,35	28,1	31,2	23,6	0	382
PYRGOS	21,42	37,67					
TRIPOLI	22,40	37,52	24,9	30,9	15,2	50	316
TATOI	23,78	38,10	27,9	31,6	22	0	
HELLINIKO	23,73	37,90	29,5	33,4	24,2	20	391
ELEYSINA	23,55	38,07	30	33,9	24,4		
ZAKYNTHOS	20,88	37,75	28,8	32,9	20,8	0	402
SAMOS	26,92	37,68	29,6	33,5	24,4	0	
ARGOS	22,75	37,63					
KALAMATA	22,02	37,07	27,6	32,4	19,4	28	359
NAXOS	25,37	37,10					
METHONI	21,70	36,82					
MHLOS	24,43	36,73					
SPATA	23,95	37,95	27,7	31,3	21,4		
KOS	27,08	36,80	26,8	31,1	23,5	0	
KYTHIRA	22,98	36,15					
SANTORINI	25,41	36,41	26,7	28,9	23,6	0	358
SOUDA	24,12	35,55	27,3	30,7	22	0	397
RODOS	28,08	36,40	27,5	30,1	24,5	0	391
MYKONOS	25,35	37,43	26,1	28,7	23	0	
HRAKLEIO	25,18	35,33	26,9	28,9	22,6	0	392
IERAPETRA	25,73	35,02					
SITEIA	26,10	35,21	25,7	28,2	24,5		326
RETHYMNO	24,50	35,36					
TYMPAKI	24,76	35,06					
KASTELI	25,33	35,18	25,2	28,7	21,5	16	336
KARPATHOS	27,15	35,42	25,9	28,8	23,8	0	
PAROS	25,13	37,02	26,1	29	23,2	0	374
SYROS	24,95	37,42	26,6	28,9	24,1	0	379
IKARIA	26,35	37,68					

**TABLE OF DEVIATIONS
FROM NORMAL VALUES**

STATION	TMEAN (deviation) (I)	PRECI (deviation %) (II)
SERRES	1.8	61
FLORINA		
THESSALONIKI	1.4	8
ALEXANDROUPOLI	2.9	0
KOZANI	0.3	264
KERKYRA	2.1	1
IOANNINA	1.2	154
LARISA	1.1	15
LIMNOS	1.2	146
AGHIALOS	1.1	1
MYTILINI	1.7	0
AGRINIO		
SKYROS	0.3	0
ARGOSTOLI	1.5	65
ARAXOS	1.6	279
HIOS	1.7	0
HELLINIKO	1.7	357
ZAKYNTHOS	2.1	0
SAMOS	1.2	0
KALAMATA	1.1	800
NAXOS		
METHONI		
SANTORINI	1.3	0
SOUDA	0.9	0
RODOS	0.6	0
HERAKLIO	0.8	0
SITIA	-0.3	1

(I) deviation of mean temperature from normal values
 (II) deviation of monthly precipitation height from normal values %.

Climatic Bulletin

General Description

Precipitation amounts were higher than normal values over central and north mainland.

The mean temperature varied higher than normals over most parts.

Climatic Parameters :

- ❖ **Normal Values** : normal values for various parameters (temperature, precipitation, etc) are defined as mean values calculated for 30 years. These normal values are used as basis and represent the mean situation. They can be specified in 10 daily, monthly, seasonally and yearly level and are used for the trend comparison of 10 days, month, season or year as: rainy decameron, mild winter, cool August etc.

Measurement :

- ❖ **Precipitation**
1 mm = 1 litre/m²

Table Legend :

Tmean : Mean Temperature
 TN : Minimum Temperature
 TX : Maximum Temperature
 RR : Precipitation height(mm)
 INST : Sun Duration (hours)

UTC hours (Universal Time Coordinates) in Greece :

- ❖ Winter : UTC hour = local hour - 2
- ❖ Summer : UTC hour = local hour - 3

© Hellenic National Meteorological Service
 Reproduction is prohibited without written authorization
 14 El.Venizelou 16777
 Helliniko, Athens
 Greece