




Climatic Bulletin

October 2020

 **Max
temperature**

 **Min
temperature**

 **Mean
temperature**

 **Precipitation**

 **Sunshine
duration**

In October the mean values of temperature varied higher than normals everywhere.
However the main characteristic was the long lasting intense rainfalls which recorded over northern parts of Crete and caused ruinous floods.
Particularly in Met. Station of Iraklion the monthly height of precipitation (304mm) forms a new record for the long period of 111 years.



Temperature

First 10-day period

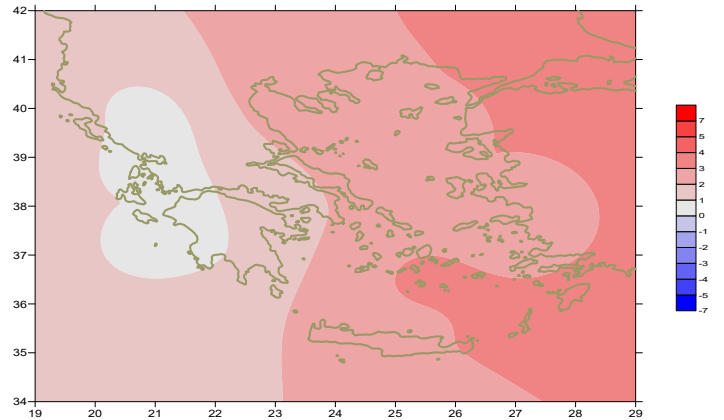
More specific (varied) :

Minimum:

from 2°C to 22°C over north mainland,
 from 8°C to 23°C over central mainland,
 from 12°C to 24°C over rest parts.

Maximum:

from 22°C to 35°C over north mainland,
 from 22°C to 34°C over central mainland,
 from 23°C to 35°C over rest parts.



Deviation of mean temperature from normal values

Second 10-day period

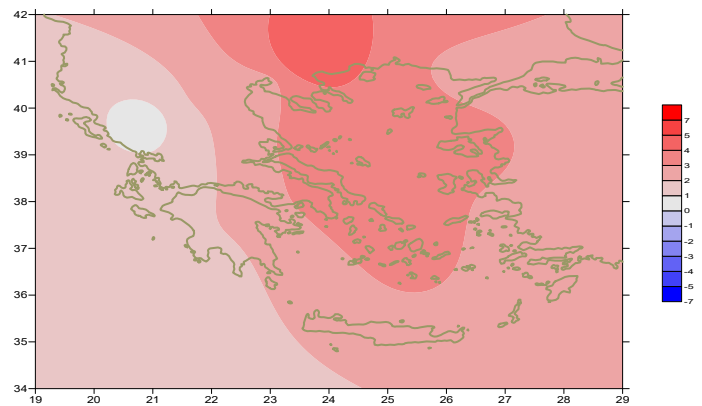
More specific (varied) :

Minimum:

from 3°C to 18°C over north mainland,
 from 7°C to 21°C over central mainland,
 from 12°C to 24°C over rest parts.

Maximum:

from 16°C to 29°C over north mainland,
 from 16°C to 28°C over central mainland,
 from 20°C to 33°C over rest parts.



Deviation of maximum temperature from normal values

Third 10-day period

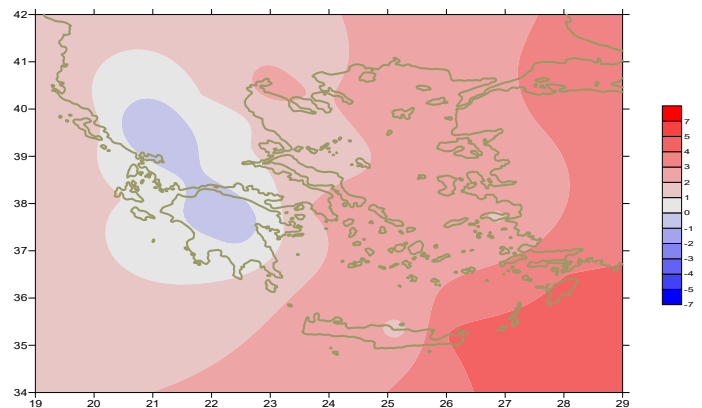
More specific (varied) :

Minimum:

from -1°C to 16°C over north mainland,
 from 5°C to 18°C over central mainland,
 from 10°C to 22°C over rest parts.

Maximum:

from 16°C to 27°C over north mainland,
 from 17°C to 29°C over central mainland,
 from 19°C to 30°C over rest parts.



Deviation of minimum temperature from normal values



P r e c i p i t a t i o n

First 10-day period

Remarkable amounts of precipitation locally over north parts.

More specific:

35mm in Alexandroupoli, 48mm in Soufli (8/10),
15mm in Tanagra (9/10).

Second 10-day period

Locally very high amounts of precipitation.

More specific:

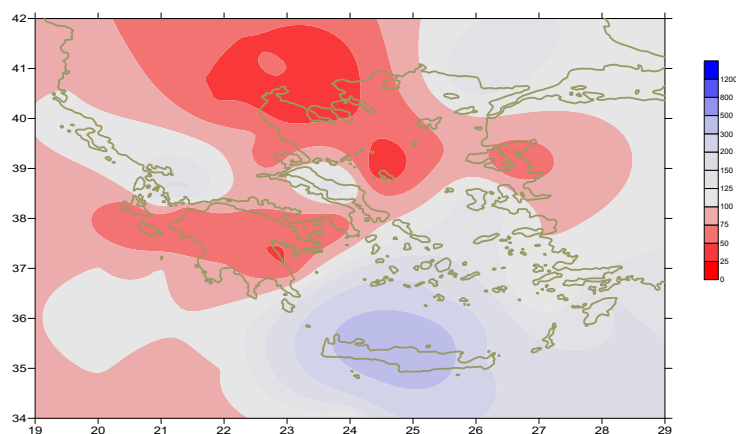
77mm in Kerkira, 35mm in Othonoi (12/10),
66mm in Doxato, 29mm in Edessa, 39mm in Preveza, 22mm in Kastoria,
34mm in Ioannina, 25mm in Konitsa, 24mm in Argostoli, 32mm in Zakynthos,
33mm in Adravida, 26mm in Kalamata, 24mm in Araxos, 29mm in Tatoi (13/10),
39mm in Ioannina, 38mm in Kerkira (16/10),
95mm in Iraklion, 88mm in Souda, 36mm in Gavdos, 21mm in Sitia (20/10).

Third 10-day period

Very high amounts of precipitation locally over east and south parts.

More specific:

164mm in Iraklion, 81mm in Souda, 35mm in Oreoi, 21mm in Sitia,
47mm in Kastelorizo, 22mm in Rodos (21/10),
40mm in Milos, 29mm in Paros, 31mm in Siros, 115mm in Souda (22/10),
33mm in Kalamata, 24mm in Larisa, 23mm in Aghialos, 26mm in Santorini,
23mm in Karpathos, 31mm in Kos (28/10),
25mm in Chios, 25mm in Leros, 33mm in Rodos (29/10),
82mm in Kastelorizo (30/10).



**Deviation of monthly precipitation height
from normal values (%)**

TABLE OF MEAN VALUES

STATION	Longitude	Lattitude	Tmean	TX	TN	RR	INST
RRES	23,53	41,07	18,2	26	10,4	7	200
FLORINA	21,40	40,78					
KASTORIA	21,27	40,45	14,4	21,6	6,7	44	210
TRIKALA_IMATHIAS	22,55	40,60					
THESSALONIKI	22,97	40,52	18,8	23,8	13	12	230
CHRYSOUPOLI	24,62	40,92	18,3	23,6	12,7	35	240
ALEXANDROUPOLI	25,95	40,85	18,6	23	12,9	68	213
KOZANI	21,83	40,28	15	21,3	8,9	25	
KERKYRA	19,92	39,62	19,7	24,5	14,9	157	196
IOANNINA	20,82	39,70	15,1	21,7	7,5	102	167
PREVEZA	20,76	38,91	19,9	24,1	15,2	84	
TRIKALA_THESSALIAS	21,77	39,52					
LARISA	22,45	39,65	18	24,6	10,4	37	
LIMNOS	25,23	39,92	19	23,5	14,7	27	230
ARTA	21,00	39,17					
AGHIALOS	22,78	39,21	18,6	24,4	13,3	33	222
MYTILINI	26,60	39,05	21,3	24,7	17,4	13	216
VELO	22,77	37,97					
AGRINIO	21,35	38,60					
LAMIA	22,43	38,87					
ANDRAVIDA	21,28	37,92	19,4	25,1	13,7	41	220
SKYROS	24,48	38,96	20,5	24,1	17,3	4	226
ARGOSTOLI	20,50	38,12	20,7	24,5	17	35	230
ARAXOS	21,42	38,15	19,6	24,6	14	32	245
TANAGRA	23,57	38,33					
HIOS	26,13	38,35	20,3	24,6	15,6	49	230
PYRGOS	21,42	37,67					
TRIPOLI	22,40	37,52	15,5	22,9	7,3	31	215
TATOI	23,78	38,10	19,1	24,5	13,7	37	
HELLINIKO	23,73	37,90	21,2	26,1	17,6	16	265
ELEYSINA	23,55	38,07	21,5	25,7	17,1	23	
ZAKYNTHOS	20,88	37,75	20,4	24,2	16	44	228
SAMOS	26,92	37,68	21,7	25,8	16,7	28	
ARGOS	22,75	37,63					
KALAMATA	22,02	37,07	19,7	25,8	13,5	66	242
NAXOS	25,37	37,10					
METHONI	21,70	36,82					
MHLOS	24,43	36,73					
SPATA	23,95	37,95					
KOS	27,08	36,80	22,4	26	20	45	
KYTHIRA	22,98	36,15					
SANTORINI	25,41	36,41	22,3	24,9	19,1	51	211
SOUDA	24,12	35,55	21,6	25,5	17,9	312	214
RODOS	28,08	36,40	23,7	26,6	20,9	76	241
MYKONOS	25,35	37,43	22,5	26,3	20,2	27	
HRAKLEIO	25,18	35,33	22	25,5	18,2	304	224
IERAPETRA	25,73	35,02					
SITEIA	26,10	35,21	23,2	26	20,8	108	203
RETHYMNO	24,50	35,36					
TYMPAKI	24,76	35,06					
KASTEI	25,33	35,18	20,1	25,2	15,5	45	218
KARPATOS	27,15	35,42					
PAROS	25,13	37,02	21,9	25,1	19,1	25	232
SYROS	24,95	37,42	22,2	25,4	19,3	51	246
IKARIA	26,35	37,68					

**TABLE OF DEVIATIONS
FROM NORMAL VALUES**

STATION	TMEAN (deviation) (I)	PRECI (deviation %) (II)
SERRES	2.8	16
FLORINA		
THESSALONIKI	2.7	30
ALEXANDROUPOLI	3.1	135
KOZANI	1.6	49
KERKYRA	1.3	106
IOANNINA	0.2	107
LARISA	1.9	179
LIMNOS	2.4	751
AGHIALOS	1.9	51
MYTILINI	3	34
AGRINIO		
SKYROS	2.4	10
ARGOSTOLI	1	33
ARAXOS	0.7	38
HIOS	2.3	131
HELLINIKO	1.9	34
ZAKYNTHOS	0.8	30
SAMOS	2.5	97
KALAMATA	0.9	66
NAXOS		
METHONI		
SANTORINI	3.4	175
SOUDA	2.6	390
RODOS	3.1	118
HERAKLIO	2.1	442
SITIA	3.1	189

(I) deviation of mean temperature from normal values
 (II) deviation of monthly precipitation height from normal values %.

Climatic Bulletin

General Description

Precipitation amounts were higher enough than normal values locally over west mainland, over central Evia and mainly over Crete. The mean temperature varied higher than normals everywhere.

Climatic Parameters :

- ❖ **Normal Values** : normal values for various parameters (temperature, precipitation, etc) are defined as mean values calculated for 30 years. These normal values are used as basis and represent the mean situation. They can be specified in 10 daily, monthly, seasonally and yearly level and are used for the trend comparison of 10 days, month, season or year as: rainy decameron, mild winter, cool August etc.

Measurement :

- ❖ **Precipitation**
1 mm = 1 litre/m²

Table Legend :

Tmean : Mean Temperature
 TN : Minimum Temperature
 TX : Maximum Temperature
 RR : Precipitation height(mm)
 INST : Sun Duration (hours)

UTC hours (Universal Time Coordinates) in Greece :

- ❖ Winter : UTC hour = local hour - 2
- ❖ Summer : UTC hour = local hour - 3

© Hellenic National Meteorological Service
 Reproduction is prohibited without written authorization
 14 El.Venizelou 16777
 Helliniko, Athens
 Greece