




# Climatic Bulletin

February 2021

 **Max  
temperature**

 **Min  
temperature**

 **Mean  
temperature**

 **Precipitation**

 **Sunshine  
duration**

February characterized by intense and long lasting snowfalls which covered Attica with huge amounts of snow during the two days period (15-16/2). Meanwhile significant precipitation recorded only over Thrace and northeastern parts of Aegean.

The mean temperature values were higher than normals. Also strong gale force north winds prevailed over Aegean area.



# Temperature

### First 10-day period

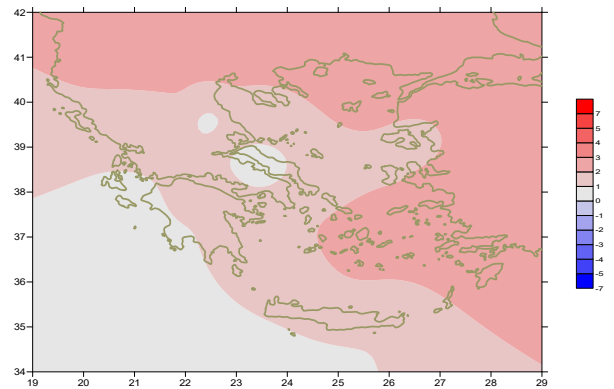
More specific (varied) :

**Minimum:**

from  $-2^{\circ}\text{C}$  to  $14^{\circ}\text{C}$  over north mainland,  
 from  $-1^{\circ}\text{C}$  to  $16^{\circ}\text{C}$  over central mainland,  
 from  $0^{\circ}\text{C}$  to  $16^{\circ}\text{C}$  over rest parts.

**Maximum:**

from  $9^{\circ}\text{C}$  to  $20^{\circ}\text{C}$  over north mainland,  
 from  $13^{\circ}\text{C}$  to  $21^{\circ}\text{C}$  over central mainland,  
 from  $16^{\circ}\text{C}$  to  $23^{\circ}\text{C}$  over rest parts.



*Deviation of mean temperature from normal values*

### Second 10-day period

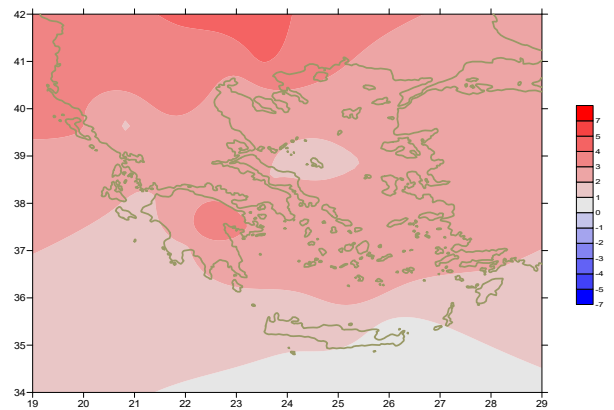
More specific (varied) :

**Minimum:**

from  $-22^{\circ}\text{C}$  to  $14^{\circ}\text{C}$  over north mainland,  
 from  $-9^{\circ}\text{C}$  to  $16^{\circ}\text{C}$  over central mainland,  
 from  $-3^{\circ}\text{C}$  to  $16^{\circ}\text{C}$  over rest parts.

**Maximum:**

from  $-7^{\circ}\text{C}$  to  $20^{\circ}\text{C}$  over north mainland,  
 from  $-3^{\circ}\text{C}$  to  $21^{\circ}\text{C}$  over central mainland,  
 from  $1^{\circ}\text{C}$  to  $23^{\circ}\text{C}$  over rest parts.



*Deviation of maximum temperature from normal values*

### Third 10-day period

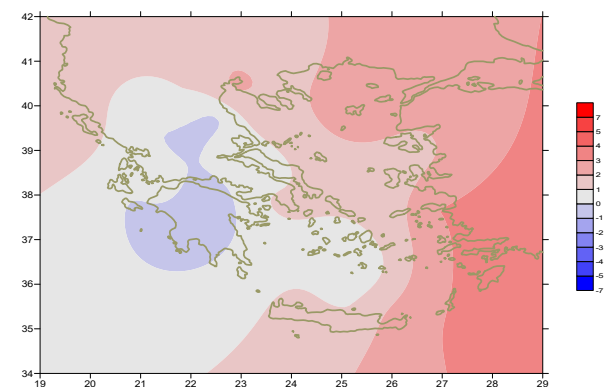
More specific (varied) :

**Minimum:**

from  $-5^{\circ}\text{C}$  to  $10^{\circ}\text{C}$  over north mainland,  
 from  $-4^{\circ}\text{C}$  to  $11^{\circ}\text{C}$  over central mainland,  
 from  $-2^{\circ}\text{C}$  to  $15^{\circ}\text{C}$  over rest parts.

**Maximum:**

from  $7^{\circ}\text{C}$  to  $20^{\circ}\text{C}$  over north mainland,  
 from  $8^{\circ}\text{C}$  to  $23^{\circ}\text{C}$  over central mainland,  
 from  $10^{\circ}\text{C}$  to  $23^{\circ}\text{C}$  over rest parts.



*Deviation of minimum temperature from normal values*



## P r e c i p i t a t i o n

### First 10-day period

Locally high amounts of precipitation.

More specific:

211mm in Alexandroupoli, 81mm in Soufli, 28mm in Konitsa, 30mm in Ioannina, 16mm in Araxos, 18mm in Skiros, 16mm in Adravida (1/2), 24mm in Preveza, 16mm in Ioannina, 31mm in Samos, 31mm in Mitilini (2/2), 67mm in Samos, 22mm in Kos (3/2), 19mm in Alexandroupoli, 20mm in Konitsa (8/2).

### Second 10-day period

Locally high amounts of precipitation.

More specific:

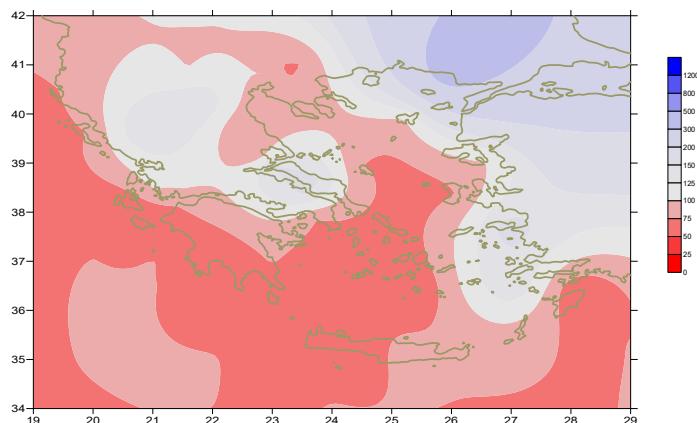
15mm in Kerkira, 12mm in Preveza (11 /2), 14mm in Mitilini (12/2), 48mm in Kerkira (13/2), 19mm in Kastoria, 21mm in Preveza, 34mm in Ioannina, 21mm in Αργοστόλι, 20mm in Adravida, 24mm in Araxos, 18mm in Kalamata, 24mm in Antirio, 24mm in Tithorea, 28mm in Mesologi, 31mm in Tripoli, 18mm in Tanagra, 19mm in Argos, 16mm in Paros, 27mm in Samos, 22mm in Mitilini (14/2), 33mm in Heraklion, 35mm in Kasteli(15/2), 22mm in Tanagra, 20mm in Hellinikon (16/2), 23mm in Oreoi (17/2).

### Third 10-day period

Locally remarkable amounts of precipitation only over south parts.

More specific:

22mm in Karpathos, 14mm in Kasteli (21/2), 15mm in Kasteli, 9mm in Heraklion (22/2).



**Deviation of monthly precipitation height  
from normal values (%)**

TABLE OF MEAN VALUES

STATION	Longitude	Latitude	Tmean	TX	TN	RR	INST
RRES	23,53	41,07	8,6	14,8	2,6	27	160
FLORINA	21,40	40,78					
KASTORIA	21,27	40,45	5,7	12,8	-1,9	67	158
TRIKALA_IMATHIAS	22,55	40,60					
THESSALONIKI	22,97	40,52	8,9	13,6	4,7	9	176
CHRYSOUPOLI	24,62	40,92	8,4	12,6	4	12	160
ALEXANDROUPOLI	25,95	40,85	8,3	12,2	4,5	220	153
KOZANI	21,83	40,28	5,7	11,7	0,4	41	
KERKYRA	19,92	39,62	12,1	17,3	7,5	98	172
IOANNINA	20,82	39,70	7,8	13,7	1,2	118	147
PREVEZA	20,76	38,91	11,9	16,4	7,9	91	
TRIKALA_THESSALIAS	21,77	39,52					
LARISA	22,45	39,65	7,6	14,1	1,2	16	158
LIMNOS	25,23	39,92	10,3	13,3	7,5	33	173
ARTA	21,00	39,17					
AGHIALOS	22,78	39,21	8,8	14,7	4,1	22	182
MYTILINI	26,60	39,05	11,5	14,6	8,7	83	174
VELO	22,77	37,97					
AGRINIO	21,35	38,60					
LAMIA	22,43	38,87					
ANDRAVIDA	21,28	37,92	11,1	16,4	6,2	59	200
SKYROS	24,48	38,96	11,6	14,3	9,2	38	156
ARGOSTOLI	20,50	38,12	12,5	16,6	9,1	51	197
ARAXOS	21,42	38,15	11,5	16,2	6,8	62	203
TANAGRA	23,57	38,33	8,7	14,6	3,9	68	162
HIOS	26,13	38,35	11,7	14,8	8	36	166
PYRGOS	21,42	37,67					
TRIPOLI	22,40	37,52	7,5	13,9	0,8	31	172
TATOI	23,78	38,10	9	14,5	4,7	24	
HELLINIKO	23,73	37,90	12,3	16,8	8,6	28	202
ELEYSINA	23,55	38,07	11,4	15,9	6,9	38	
ZAKYNTHOS	20,88	37,75	12,2	16,2	8,1	30	197
SAMOS	26,92	37,68	12,8	15,9	9,4	166	
ARGOS	22,75	37,63					
KALAMATA	22,02	37,07	11,5	17,5	5,4	24	207
NAXOS	25,37	37,10					
METHONI	21,70	36,82					
MHLOS	24,43	36,73					
SPATA	23,95	37,95					
KOS	27,08	36,80	13,6	16,5	11,6	27	
KYTHIRA	22,98	36,15					
SANTORINI	25,41	36,41	13,6	16,3	9,4	11	187
SOUDA	24,12	35,55	12,3	16,2	9	42	178
RODOS	28,08	36,40	14,8	17,1	12,4	16	195
MYKONOS	25,35	37,43	12,8	15,4	11,6	11	
HRAKLEIO	25,18	35,33	13,5	16,9	10,1	63	183
IERAPETRA	25,73	35,02					
SITEIA	26,10	35,21	13,5	16	11,8	49	155
RETHYMNO	24,50	35,36					
TYMPAKI	24,76	35,06					
KASTELI	25,33	35,18	10,9	14,8	7	78	181
KARPATOS	27,15	35,42					
PAROS	25,13	37,02	12,8	15,9	10,6	13	178
SYROS	24,95	37,42	13,1	15,4	11,4	21	190
IKARIA	26,35	37,68					

11,314,58,13617810,214,16,45611,314,57,89612510,713,7820210,5165,88616112,715,410,232137

**TABLE OF DEVIATIONS  
FROM NORMAL VALUES**

STATION	TMEAN ( deviation ) (I)	PRECI ( deviation % ) (II)
SERRES	2.3	64
FLORINA		
THESSALONIKI	2.2	22
ALEXANDROUPOLI	2.5	360
KOZANI	2.1	130
KERKYRA	1.8	72
IOANNINA	1.7	102
LARISA	0.8	46
LIMNOS	2.4	75
AGHIALOS	1.2	43
MYTILINI	1.7	85
AGRINIO		
SKYROS	1.4	60
ARGOSTOLI	0.8	45
ARAXOS	1	73
HIOS	1.9	43
HELLINIKO	1.8	59
ZAKYNTHOS	0.7	27
SAMOS	2.8	162
KALAMATA	0.8	24
NAXOS		
METHONI		
SANTORINI	2.4	18
SOUDA	1.2	37
RODOS	2.8	14
HERAKLIO	1.3	81
SITIA	1.1	65

(I) deviation of mean temperature from normal values  
 (II) deviation of monthly precipitation height from normal values %.

# Climatic Bulletin

## General Description

Precipitation amounts were lower than normal values with the exception of Trace and the islands of north and east Aegean sea. The mean temperature varied above normal values everywhere.

### Climatic Parameters :

- ❖ **Normal Values** : normal values for various parameters (temperature, precipitation, etc) are defined as mean values calculated for 30 years. These normal values are used as basis and represent the mean situation. They can be specified in 10 daily, monthly, seasonally and yearly level and are used for the trend comparison of 10 days, month, season or year as: rainy decameron, mild winter, cool August etc.

### Measurement :

- ❖ **Precipitation**  
1 mm = 1 litre/m<sup>2</sup>

### Table Legend :

Tmean : Mean Temperature  
 TN : Minimum Temperature  
 TX : Maximum Temperature  
 RR : Precipitation height(mm)  
 INST : Sun Duration (hours)

### UTC hours (Universal Time Coordinates) in Greece :

- ❖ Winter : UTC hour = local hour - 2
- ❖ Summer : UTC hour = local hour - 3

© Hellenic National Meteorological Service  
 Reproduction is prohibited without written authorization  
 14 El.Venizelou 16777  
 Helliniko, Athens  
 Greece