




Climatic Bulletin

June 2021

 **Max
temperature**

 **Min
temperature**

 **Mean
temperature**

 **Precipitation**

 **Sunshine
duration**

June started from the beginning as a rainy and slightly cold month but the temperature values climbed gradually to very high levels till the end because of the transportation of very hot air masses from Africa. In parallel a significant dust episode took place at the same time.



ΕΘΝΙΚΗ
ΜΕΤΕΩΡΟΛΟΓΙΚΗ
ΥΠΗΡΕΣΙΑ
HELLENIC NATIONAL METEOROLOGICAL SERVICE



Temperature

First 10-day period

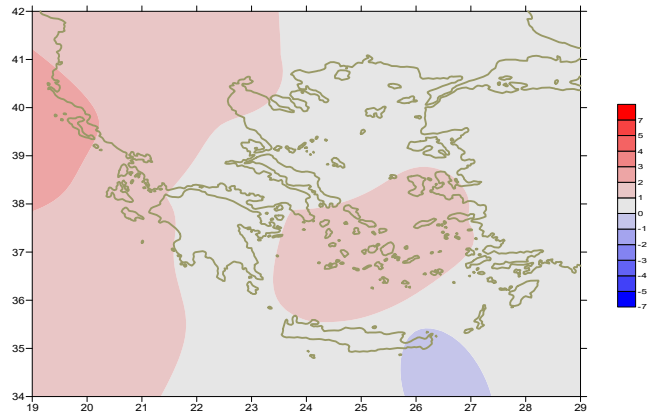
More specific (varied) :

Minimum:

from 3.4°C to 18°C over north mainland,
 from 6°C to 20°C over central mainland,
 from 11°C to 23°C over rest parts.

Maximum:

from 18°C to 33°C over north mainland,
 from 18°C to 33°C over central mainland,
 from 23°C to 30°C over rest parts.



Deviation of mean temperature from normal values

Second 10-day period

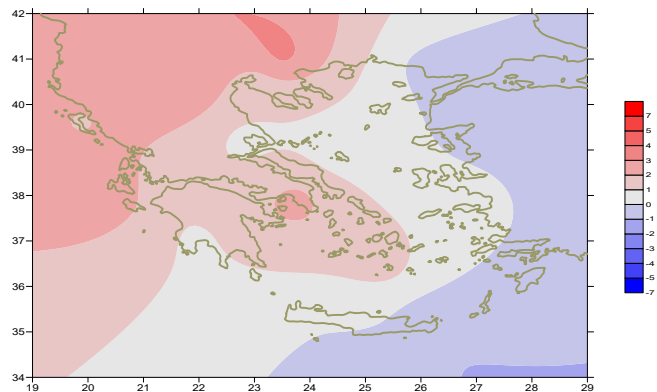
More specific (varied) :

Minimum:

from 5°C to 20°C over north mainland,
 from 8°C to 20°C over central mainland,
 from 15°C to 22°C over rest parts.

Maximum:

from 22°C to 32°C over north mainland,
 from 22°C to 35°C over central mainland,
 from 23°C to 31°C over rest parts.



Deviation of maximum temperature from normal values

Third 10-day period

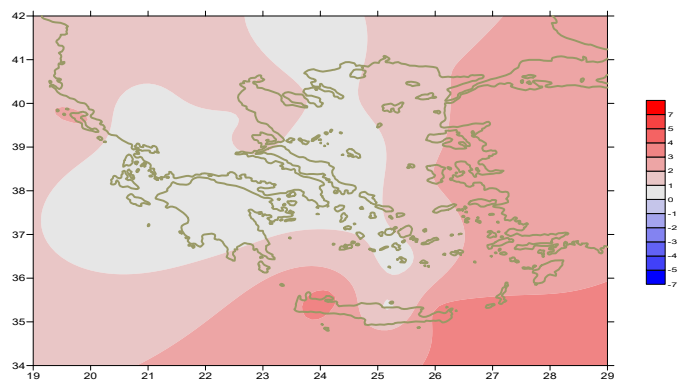
More specific (varied) :

Minimum:

from 12°C to 25°C over north mainland,
 from 11°C to 26°C over central mainland,
 from 16°C to 27°C over rest parts.

Maximum:

from 26°C to 41°C over north mainland,
 from 27°C to 42.8°C over central mainland,
 from 27°C to 35°C over rest parts.



Deviation of minimum temperature from normal values



P r e c i p i t a t i o n

First 10-day period

Locally significant amounts of precipitation mainly over mainland.

More specific:

32mm in Xanthi, 24mm in Alexandroupoli, 12mm in Skiros,
6mm in Aghialos, 6mm in Paros, 13mm in Limnos (1/6),
11mm in Kotroni (2/6),
10mm in Doxato, 7mm in Serres, 7mm in Kozani, 6mm in Kavala (7/6),
14mm in Alexandroupoli, 8mm in Edessa, 12mm in Tithorea (8/6),
12mm in Thessaloniki, 8mm in Kastoria, 12mm in Konitsa, 22mm in Kranea,
17mm in Antirio, 13mm in Sofades, 15mm in Argos, 23mm in Tithorea (9/6),
12mm in Serres, 9mm in Ioannina (10/6).

Δεύτερο δεκαήμερο Second 10-day period

Locally significant amounts of precipitation over mainland.

More specific:

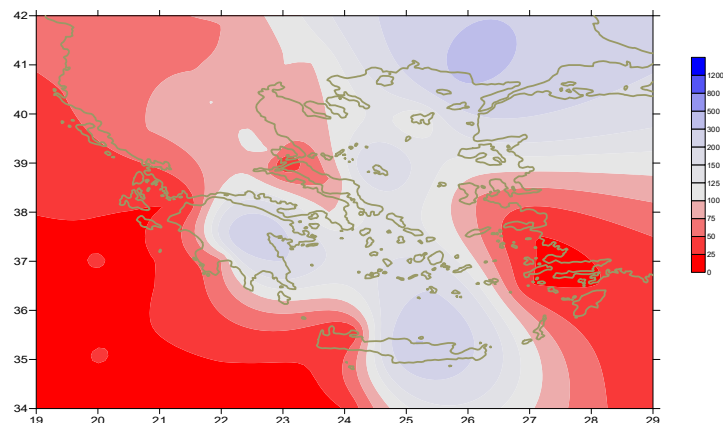
33mm in N. Filadelfeia, 12mm in Tripoli, 13mm in Argos,
9mm in Kranea, 6mm in Tatoi (11/6),
21mm in Ormenio, 7mm in Soufli, 16mm in Elefsina, 9mm in Tatoi (12/6),
7mm in Limnos (14/6),
10mm in Aghialos, 20mm in Skiathos, 7mm in Karistos, 6mm in Skiros,
21mm in Ormenio, 7mm in Soufli, 16mm in Elefsina, 9mm in Tatoi (12/6),
7mm in Limnos (14/6),
9mm in Heraklion (15/6), 11mm in Alexandroupoli (16/6),
10mm in Tithorea (17/6), 12mm in Doxato, 12mm in Florina (19/6).

Third 10-day period

Significant amounts of precipitation locally only over north mainland.

More specific:

38mm in Xanthi (22/6), 34mm in Alexandroupoli (23/6).



*Deviation of monthly precipitation height
from normal values (%)*

TABLE OF MEAN VALUES

STATION	Longitude	Lattitude	Tmean	TX	TN	RR	INST
SERRES	23,53	41,07	24,9	32,8	16,4	36	294
FLORINA	21,40	40,78					
KASTORIA	21,27	40,45	22,6	28,9	12,7	22	301
TRIKALA_IMATHIAS	22,55	40,60					
THESSALONIKI	22,97	40,52	25,5	30,6	18,1	16	321
CHRYSOUPOLI	24,62	40,92	23,5	26,8	17,6	31	269
ALEXANDROUPOLI	25,95	40,85	23,2	26,8	16,7	94	274
KOZANI	21,83	40,28	22,5	29,1	14,3	32	
KERKYRA	19,92	39,62	25,9	29,8	18,5	4	344
IOANNINA	20,82	39,70	23,5	30	12,7	27	303
PREVEZA	20,76	38,91					
TRIKALA_THESSALIAS	21,77	39,52					
LARISA	22,45	39,65	25,9	32,3	15,8	20	255
LIMNOS	25,23	39,92	24	27,3	18,2	20	332
ARTA	21,00	39,17					
AGHIALOS	22,78	39,21	25,2	29,6	17,5	20	308
MYTILINI	26,60	39,05					
VELO	22,77	37,97					
AGRINIO	21,35	38,60					
LAMIA	22,43	38,87					
ANDRAVIDA	21,28	37,92	25	30	16,3	2	376
SKYROS	24,48	38,96	24,1	26,5	19,5	10	335
ARGOSTOLI	20,50	38,12	25	29	18,5	4	364
ARAXOS	21,42	38,15	25	29,2	16,9		329
TANAGRA	23,57	38,33					
HIOS	26,13	38,35	25,1	27,8	19,4	7	350
PYRGOS	21,42	37,67					
TRIPOLI	22,40	37,52	22,6	29	12,1	73	288
TATOI	23,78	38,10	25,3	29,9	17,3	17	
HELLINIKO	23,73	37,90	26	30,9	20,5	6	345
ELEYSINA	23,55	38,07	26,6	30,7	20,2	38	
ZAKYNTHOS	20,88	37,75	25,9	29,8	18,2	0	373
SAMOS	26,92	37,68	26,2	29,8	20,6		
ARGOS	22,75	37,63					
KALAMATA	22,02	37,07	24,8	29,6	16,4	4	356
NAXOS	25,37	37,10					
METHONI	21,70	36,82					
MHLOS	24,43	36,73					
SPATA	23,95	37,95					
KOS	27,08	36,80	24,6	28,5	20,3	0	
KYTHIRA	22,98	36,15					
SANTORINI	25,41	36,41	25,2	28	20,3	5	348
SOUDA	24,12	35,55	25,4	28,9	21,9	0	362
RODOS	28,08	36,40	25,6	28	22,5		383
MYKONOS	25,35	37,43	25,2	28	21,5	2	
HRAKLEIO	25,18	35,33	25	27,5	19,8	10	364
IERAPETRA	25,73	35,02					
SITEIA	26,10	35,21	24,1	26,6	22,7	7	344
RETHYMNO	24,50	35,36					
TYMPAKI	24,76	35,06					
KASTELI	25,33	35,18	24,1	28	17,5	4	324
KARPATIOS	27,15	35,42					
PAROS	25,13	37,02	24,9	28	20,5	0	368
SYROS	24,95	37,42	25	28,1	21,7		349
IKARIA	26,35	37,68					

11,314,58,13617810,214,16,45611,314,57,89612510,713,7820210,5165,88616112,715,410,232137

**TABLE OF DEVIATIONS
FROM NORMAL VALUES**

STATION	TMEAN (deviation) (I)	PRECI (deviation %) (II)
SERRES	1	82
FLORINA		
THESSALONIKI	1.3	51
ALEXANDROUPOLI	0.2	344
KOZANI	1.2	83
KERKYRA	2.1	28
IOANNINA	1.8	58
LARISA	1	85
LIMNOS	0.7	91
AGHIALOS	0.8	95
MYTILINI		
AGRINIO		
SKYROS	0.4	192
ARGOSTOLI	1.8	19
ARAXOS	1	1
HIOS	1.2	46
HELLINIKO	1	100
ZAKYNTHOS	1.8	0
SAMOS	1	1
KALAMATA	0.7	62
NAXOS		
METHONI		
SANTORINI	1.8	161
SOUDA	1	0
RODOS	0.9	0
HERAKLIO	0.7	313
SITIA	-0.3	149

(I) deviation of mean temperature from normal values
 (II) deviation of monthly precipitation height from normal values %.

Climatic Bulletin

General Description

Precipitation amounts were higher than normal values locally over mainland and locally over Aegean area. The mean temperature varied higher than normal values in general, with the exception of eastern parts of Crete.

Climatic Parameters :

- ❖ **Normal Values** : normal values for various parameters (temperature, precipitation, etc) are defined as mean values calculated for 30 years. These normal values are used as basis and represent the mean situation. They can be specified in 10 daily, monthly, seasonally and yearly level and are used for the trend comparison of 10 days, month, season or year as: rainy decameron, mild winter, cool August etc.

Measurement :

- ❖ **Precipitation**
1 mm = 1 litre/m²

Table Legend :

Tmean : Mean Temperature
 TN : Minimum Temperature
 TX : Maximum Temperature
 RR : Precipitation height(mm)
 INST : Sun Duration (hours)

UTC hours (Universal Time Coordinates) in Greece :

- ❖ Winter : UTC hour = local hour - 2
- ❖ Summer : UTC hour = local hour - 3

© Hellenic National Meteorological Service
 Reproduction is prohibited without written authorization
 14 El.Venizelou 16777
 Helliniko, Athens
 Greece