




# Climatic Bulletin

September 2021

 **Max  
temperature**

 **Min  
temperature**

 **Mean  
temperature**

 **Precipitation**

 **Sunshine  
duration**

In September the values of temperature varied between the first and the third week.

Over the most parts of Greece the precipitation amounts were lower than normal ones or there was lack of precipitation.

In contrast, over Evia, over west Crete and locally over central and north mainland very large amounts of precipitation recorded causing several problems.



# Temperature

### First 10-day period

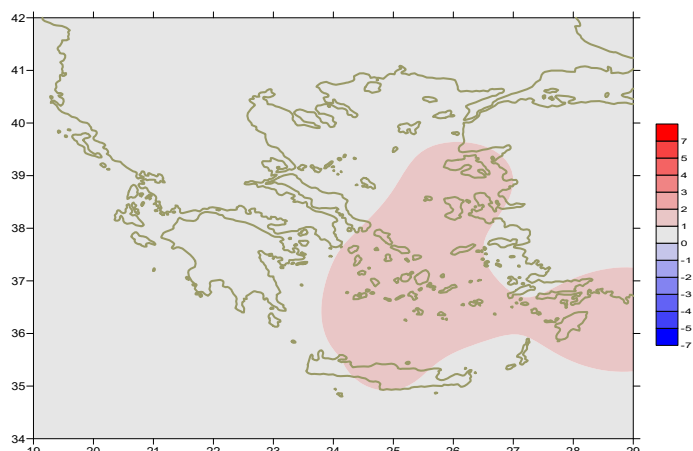
More specific (varied) :

**Minimum:**

from 6,5°C to 21°C over north mainland,  
 from 10°C to 24°C over central mainland,  
 from 18°C to 25°C over rest parts.

**Maximum:**

from 18°C to 32°C over north mainland,  
 from 23°C to 35.6°C over central mainland,  
 from 23°C to 32°C over rest parts.



*Deviation of mean temperature from normal values*

### Second 10-day period

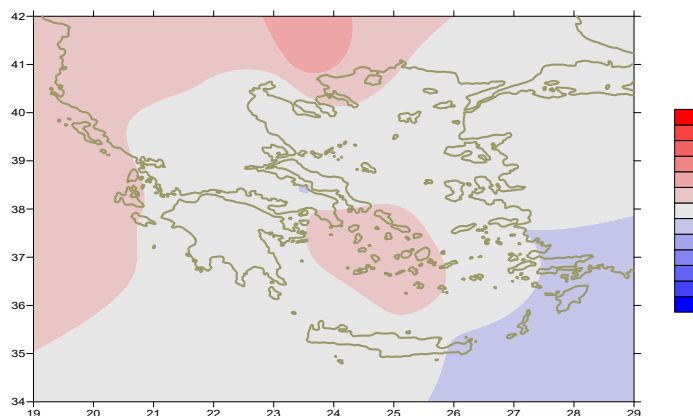
More specific (varied) :

**Minimum:**

from 6,3°C to 20°C over north mainland,  
 from 12°C to 24°C over central mainland,  
 from 16°C to 23°C over rest parts.

**Maximum:**

from 25°C to 36°C over north mainland,  
 from 26°C to 38,8°C over central mainland,  
 from 25°C to 34°C over rest parts.



*Deviation of maximum temperature from normal values*

### Third 10-day period

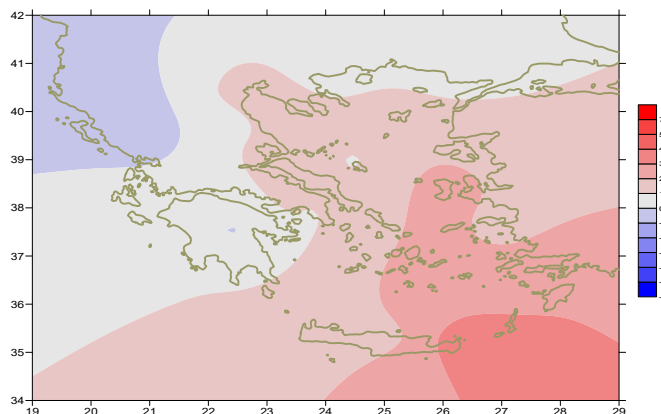
More specific (varied) :

**Minimum:**

from -1°C to 20°C over north mainland,  
 from 5°C to 25°C over central mainland,  
 from 10°C to 25°C over rest parts.

**Maximum:**

from 19°C to 33.4°C over north mainland,  
 from 20°C to 35°C over central mainland,  
 from 20°C to 33°C over rest parts.



*Deviation of minimum temperature from normal values*



## Precipitation

### First 10-day period

Locally significant amounts of precipitation over central and north parts.

More specific:

13mm in Edessa, 6mm in Kastoria, 4mm in Kozani,  
5mm in Zakynthos, 9mm in Kalamata, 7mm in Kranea,  
10mm in Tithorea, 12mm in Tripoli, 8mm in Argos (5/9),  
8mm in Astros (6/9), 3mm in Thessaloniki, 13mm in Kozani,  
9mm in Kalamata, 12mm in Larisa, 9mm in Kranea, 22mm in Aghialos,  
22mm in Tithorea, 6mm in Tanagra, 31mm in Souda (8/9),  
5mm in Thessaloniki, 6mm in Kalamata, 16mm in Larisa,  
22mm in Aghialos, 34mm in Skiathos, 8mm in Tithorea,  
12mm in Tripoli, 9mm in Astros (9/9),  
34mm in Skiros (10/9).

### Δεύτερο δεκαήμερο Second 10-day period

Locally significant amounts of precipitation..

More specific:

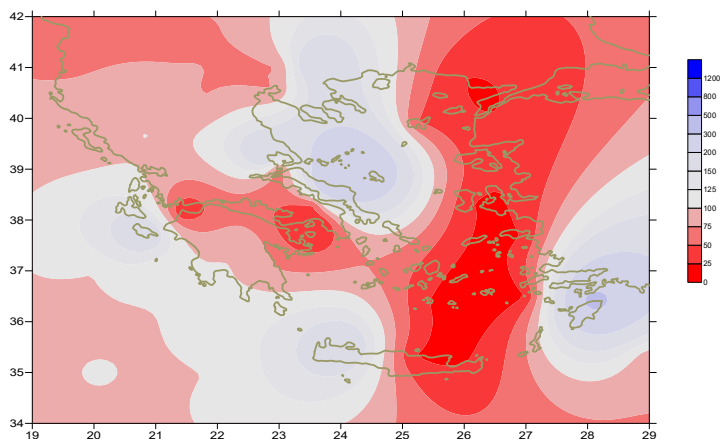
6mm in Kastoria, 29mm in Argostoli, 2mm in Kerkira,  
37mm in Zakynthos, 17mm in Adravida, 3mm in Araxos,  
2mm in Mesologi (12/9),  
23mm in Rodos (14/9),  
4mm in Kavala (15/9),  
2mm in Kastoria, 2mm in Florina, 3mm in Limnos (19/9).

### Third 10-day period

Locally significant amounts of precipitation.

More specific:

5mm in Kavala, 3mm in Serres, 5mm in Larisa,  
12mm in Skiathos (22/9),  
3mm in Alexandroupoli, 5mm in Kavala, 7mm in Skiros,  
6mm in Limnos, 23mm in Skiathos, 3mm in Tanagra,  
3mm in Heraklion, 3mm in Chios, 4mm in Kotroni (23/9),  
3mm in Serres, 2mm in Larisa, 3mm in Aghialos (28/9),  
7mm in Kavala, 14mm in Serres, 10mm in Doxato,  
8mm in Thessaloniki, 5mm in Florina, 5mm in Kastoria,  
24mm in Ioannina, 9mm in Larisa, 3mm in Kalamata,  
8mm in Kranea, 6mm in Aghialos (29/9),  
16mm in Ioannian (30/9).



**Deviation of monthly precipitation height  
from normal values (%)**

TABLE OF MEAN VALUES

STATION	Longitude	Lattitude	Tmean	TX	TN	RR	INST
SERRES	23,53	41,07	22,4	30,6	14,4	28	231
FLORINA	21,40	40,78					
KASTORIA	21,27	40,45	19,3	26,4	10,8	21	207
TRIKALA_IMATHIAS	22,55	40,60					
THESSALONIKI	22,97	40,52	22,8	27,5	16,8	17	234
CHRYSOUPOLI	24,62	40,92	21,6	26,3	15,7	23	236
ALEXANDROUPOLI	25,95	40,85	21,7	26,8	14,4	6	273
KOZANI	21,83	40,28	19,9	26,2	13,3	23	
KERKYRA	19,92	39,62					
IOANNINA	20,82	39,70	20,7	28	11,3	45	228
PREVEZA	20,76	38,91	24,2	28,6	19,1		
TRIKALA_THESSALIAS	21,77	39,52					
LARISA	22,45	39,65	28,7	35,4	19,4	40	318
LIMNOS	25,23	39,92	22,3	25,7	18,1	10	270
ARTA	21,00	39,17					
AGHIALOS	22,78	39,21	22,9	27,6	17	56	229
MYTILINI	26,60	39,05	24,1	27,6	20,2	0	286
VELO	22,77	37,97					
AGRINIO	21,35	38,60					
LAMIA	22,43	38,87					
ANDRAVIDA	21,28	37,92	23,6	29,2	17,2	20	283
SKYROS	24,48	38,96	22,8	25,4	19,8	49	254
ARGOSTOLI	20,50	38,12	24,1	28	19,8	29	278
ARAXOS	21,42	38,15	24,2	29	17,5	2	281
TANAGRA	23,57	38,33	23	28	16,6	10	248
HIOS	26,13	38,35	24,1	27	19,9	3	291
PYRGOS	21,42	37,67					
TRIPOLI	22,40	37,52	20,4	26,9	11,5	25	241
TATOI	23,78	38,10	23,3	27,8	17,8	2	
HELLINIKO	23,73	37,90	25,1	29,4	20,6	0	286
ELEYSINA	23,55	38,07	25,2	29,5	20,5	1	
ZAKYNTHOS	20,88	37,75	24,4	28,5	19,2	42	273
SAMOS	26,92	37,68	24,9	28,6	20,4	0	
ARGOS	22,75	37,63					
KALAMATA	22,02	37,07	23,7	29,7	17	28	256
NAXOS	25,37	37,10					
METHONI	21,70	36,82					
MHLOS	24,43	36,73					
SPATA	23,95	37,95					
KOS	27,08	36,80	24,6	29,2	21,1	0	
KYTHIRA	22,98	36,15					
SANTORINI	25,41	36,41	24,5	27,1	21,8	0	291
SOUDA	24,12	35,55	24	27,7	20	32	276
RODOS	28,08	36,40	25,8	28,2	23,3	24	312
MYKONOS	25,35	37,43	23,7	26,3	21,6	0	
HRAKLEIO	25,18	35,33	24,7	27,2	21,1	4	301
IERAPETRA	25,73	35,02					
SITEIA	26,10	35,21	24,2	26,5	23,2		266
RETHYMNO	24,50	35,36					
TYMPAKI	24,76	35,06					
KASTELI	25,33	35,18	22,6	26,5	18,9		290
KARPATOS	27,15	35,42	24,9	27,5	22,7		
PAROS	25,13	37,02	23,9	27,1	21,1		295
SYROS	24,95	37,42	24,1	27,1	22	0	282
IKARIA	26,35	37,68	24,9	28,6	20,4	0	

11,314,58,13617810,214,16,45611,314,57,89612510,713,7820210,5165,88616112,715,410,232137

**TABLE OF DEVIATIONS  
FROM NORMAL VALUES**

STATION	TMEAN ( deviation ) (I)	PRECI ( deviation % ) (II)
SERRES	0,8	134
FLORINA		
THESSALONIKI	1	65
ALEXANDROUPOLI	0,7	19
KOZANI	0,4	70
KERKYRA		
IOANNINA	0,4	82
LARISA	1	136
LIMNOS	0,9	51
AGHIALOS	0,7	180
MYTILINI	1,1	0
AGRINIO		
SKYROS	0,7	274
ARGOSTOLI	0,6	97
ARAXOS	0,7	9
HIOS	1,5	4
HELLINIKO	0,8	0
ZAKYNTHOS	0,6	165
SAMOS	0,6	0
KALAMATA	0,4	100
NAXOS		
METHONI		
SANTORINI	1,9	0
SOUDA	1	171
RODOS	1,2	338
HERAKLIO	1,2	21
SITIA	0,6	0

(I) deviation of mean temperature from normal values  
 (II) deviation of monthly precipitation height from normal values %.

# Climatic Bulletin

## General Description

Precipitation amounts were higher than normal values over Evia, western parts of Crete and locally over northern mainland, while they were lower over the rest parts. Also there was lack of precipitation over southern parts, over Attica, over Cyclades and over Dodecanese.  
The mean temperature varied close to normal values in general.

### Climatic Parameters :

- ❖ **Normal Values** : normal values for various parameters (temperature, precipitation, etc) are defined as mean values calculated for 30 years. These normal values are used as basis and represent the mean situation. They can be specified in 10 daily, monthly, seasonally and yearly level and are used for the trend comparison of 10 days, month, season or year as: rainy decameron, mild winter, cool August etc.

### Measurement :

- ❖ **Precipitation**  
1 mm = 1 litre/m<sup>2</sup>

### Table Legend :

Tmean : Mean Temperature  
TN : Minimum Temperature  
TX : Maximum Temperature  
RR : Precipitation height(mm)  
INST : Sun Duration (hours)

### UTC hours (Universal Time Coordinates) in Greece :

- ❖ Winter : UTC hour = local hour - 2
- ❖ Summer : UTC hour = local hour - 3

© Hellenic National Meteorological Service  
Reproduction is prohibited without written authorization  
14 El.Venizelou 16777  
Helliniko, Athens  
Greece