




Climatic Bulletin

October 2021

 **Max
temperature**

 **Min
temperature**

 **Mean
temperature**

 **Precipitation**

 **Sunshine
duration**

October recorded as a cold and very rainy month. Specifically the mean values of temperature were lower than normal ones over most parts while very large amounts of precipitation affected Ionian area and a few parts of mainland. All the above situation has been caused due to the passage of two significant barometric lows through Greek area which had as a result local floods and landslides.



Temperature

First 10-day period

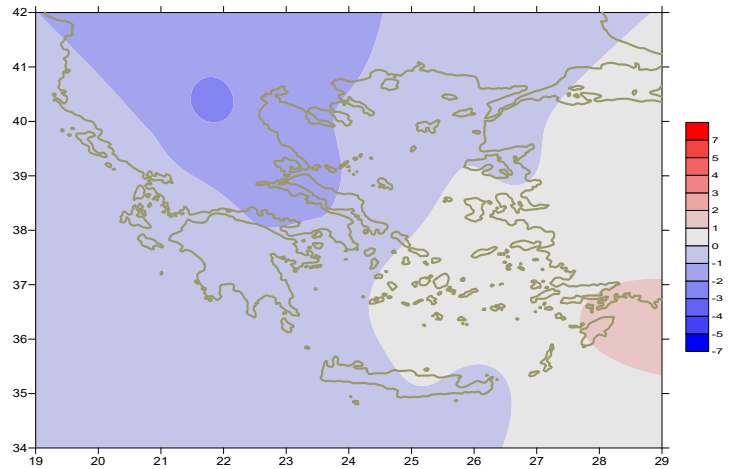
More specific (varied) :

Minimum:

from 2,3°C to 16°C over north mainland,
 from 7°C to 18°C over central mainland,
 from 14°C to 20°C over rest parts.

Maximum:

from 11°C to 25°C over north mainland,
 from 18°C to 27°C over central mainland,
 from 20°C to 27°C over rest parts.



Deviation of mean temperature from normal values

Second 10-day period

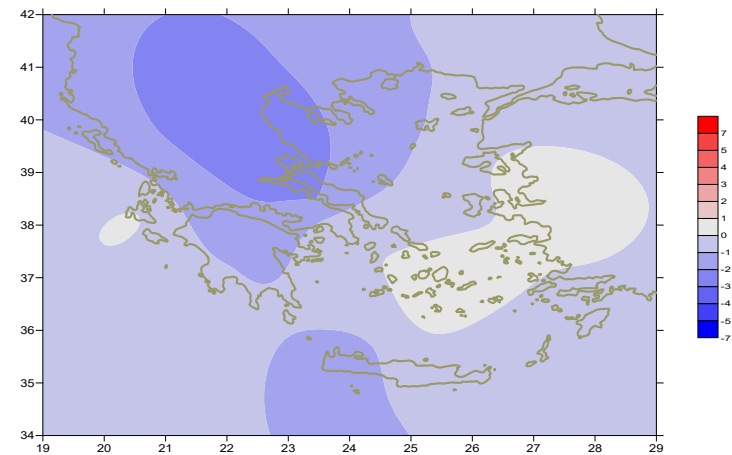
More specific (varied) :

Minimum:

from 1°C to 14°C over north mainland,
 from 5°C to 16°C over central mainland,
 from 8°C to 20°C over rest parts.

Maximum:

from 11°C to 23°C over north mainland,
 from 12°C to 26°C over central mainland,
 from 13°C to 27°C over rest parts.



Deviation of maximum temperature from normal values

Third 10-day period

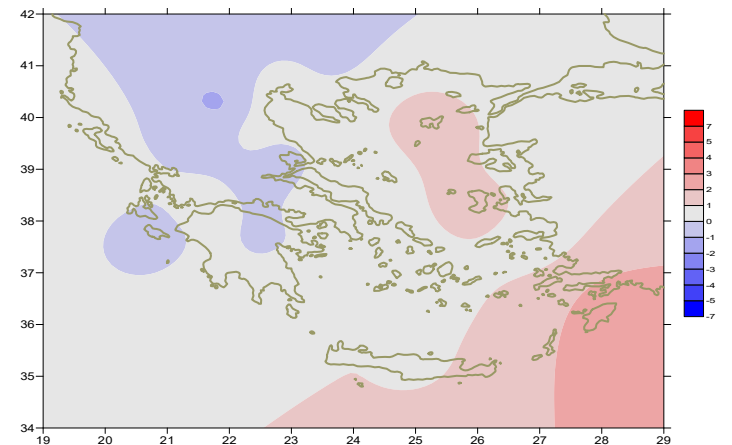
More specific (varied) :

Minimum:

from -3,3°C to 14°C over north mainland,
 from 2°C to 15°C over central mainland,
 from 11°C to 19°C over rest parts.

Maximum:

from 11°C to 24°C over north mainland,
 from 15°C to 24°C over central mainland,
 from 16°C to 29°C over rest parts.



Deviation of minimum temperature from normal values



P r e c i p i t a t i o n

First 10-day period

Locally very large amounts of precipitation.

More specific:

18mm in Florina (1/10), 30mm in Kastoria, 31mm in Preveza, 65mm in Ioannina, 56mm in Konitsa, 35mm in Argostoli, 177mm in Kerkira, 18mm in Zakynthos, 35mm in Lamia (7/10), 39mm in Florina, 32mm in Kastoria, 28mm in Kozani, 28mm in Kerkira, 45mm in Larisa, 56mm in Kranea, 23mm in Tripoli, 24mm in Antikithira (8/10), 28mm in Skiathos (9/10), 31mm in Kerkira, 43mm in Adravida, 33mm in Mesologi, 28mm in Kranea, 36mm in Skiathos (10/10).

Δεύτερο δεκάημερο Second 10-day period

Locally very large amounts of precipitation..

More specific:

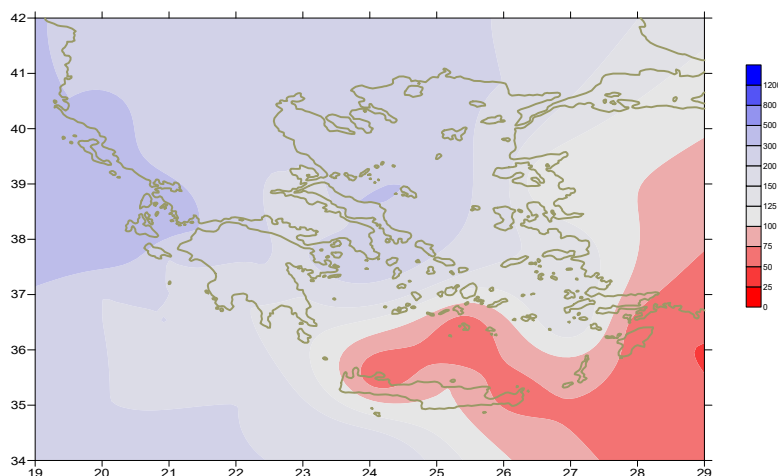
62mm in Argostoli, 26mm in Skiros (11/10), 29mm in Alexandroupoli (12/10), 48mm in Preveza, 55mm in Argostoli, 39mm in Thessaloniki, 135mm in Kerkira, 27mm in Zakynthos, 23mm in Kalamata, 56mm in Skiros, 42mm in Spata, 85mm in Tatoi, 66mm in Hellinikon, 127mm in New Filadelfia., 46mm in Kotroni (14/10), 57mm in Doxato, 55mm in Argostoli, 55mm in Limnos, 51mm in Tithorea, 97mm in Adravida, 49mm in Mesologi, 51mm in Elefsina (15/10), 40mm in Doxato, 80mm in Argostoli (16/10), 34mm in Argos (17/10).

Third 10-day period

Locally significant amounts of precipitation.

More specific:

83mm in Kerkira (23/10), 35mm in Astros, 21mm in Tripoli, 18mm in Argos (25/10), 17mm in Gavdos (26/10), 16mm in Timbaki (27/10), 13mm in Kastelorizo (30/10), 66mm in Gavdos, 20mm in Kos (31/10).



*Deviation of monthly precipitation height
from normal values (%)*

TABLE OF MEAN VALUES

STATION	Longitude	Lattitude	Tmean	TX	TN	RR	INST
SERRES	23,53	41,07	13,9	19,9	8,7	132	153
FLORINA	21,40	40,78					
KASTORIA	21,27	40,45	11,1	16,5	5,7	146	141
TRIKALA_IMATHIAS	22,55	40,60					
THESSALONIKI	22,97	40,52	15,1	18,7	11,7	116	157
CHRYSOUPOLI	24,62	40,92	14,6	18,8	10,4	113	178
ALEXANDROUPOLI	25,95	40,85	15,3	19,3	10,6	79	193
KOZANI	21,83	40,28	11	15,9	6,7	137	
KERKYRA	19,92	39,62	18,1	22	14,3	563	164
IOANNINA	20,82	39,70	14	19,5	8,2	160	163
PREVEZA	20,76	38,91	18,7	22,4	15,5	227	
TRIKALA_THESSALIAS	21,77	39,52					
LARISA	22,45	39,65	14,6	19,3	10,3	95	144
LIMNOS	25,23	39,92	16,6	19,1	14,1	78	192
ARTA	21,00	39,17					
AGHIALOS	22,78	39,21	15,2	19,2	11,5	77	124
MYTILINI	26,60	39,05	18,2	21,7	15	27	244
VELO	22,77	37,97					
AGRINIO	21,35	38,60					
LAMIA	22,43	38,87					
ANDRAVIDA	21,28	37,92	17,7	23	12,6	272	196
SKYROS	24,48	38,96	17,4	19,2	15,9	113	158
ARGOSTOLI	20,50	38,12	19,1	22,8	15,9	331	202
ARAXOS	21,42	38,15	18,5	22,3	14,4	172	190
TANAGRA	23,57	38,33	16	20,3	11,9	61	166
HIOS	26,13	38,35	18,3	21,4	15	38	236
PYRGOS	21,42	37,67					
TRIPOLI	22,40	37,52	13,5	18,6	8	117	161
TATOI	23,78	38,10	16,5	20,4	13,2	125	
HELLINIKO	23,73	37,90	18,8	23	15,6	120	210
ELEYSINA	23,55	38,07	18,2	22,3	14,9	115	
ZAKYNTHOS	20,88	37,75	18,7	22,6	15,1	160	188
SAMOS	26,92	37,68	19,3	23	15,1		
ARGOS	22,75	37,63					
KALAMATA	22,02	37,07	18,3	23,8	13,8	93	188
NAXOS	25,37	37,10					
METHONI	21,70	36,82					
MHLOS	24,43	36,73					
SPATA	23,95	37,95					
KOS	27,08	36,80	20,5	25	17,5	30	
KYTHIRA	22,98	36,15					
SANTORINI	25,41	36,41	19,6	22,1	17,1	6	218
SOUDA	24,12	35,55	18,7	21,7	16	31	182
RODOS	28,08	36,40	21,9	24,3	19,4	35	253
MYKONOS	25,35	37,43	19	21,4	17	3	
HRAKLEIO	25,18	35,33	20	22,7	17,2	56	190
IERAPETRA	25,73	35,02					
SITEIA	26,10	35,21	19,8	22,6	18	36	183
RETHYMNO	24,50	35,36					
TYMPAKI	24,76	35,06					
KASTELI	25,33	35,18	17,3	20,8	14	48	181
KARPATOS	27,15	35,42	21,2	23,7	19,2	14	
PAROS	25,13	37,02	19	21,9	16,7	6	234
SYROS	24,95	37,42	19	21,5	17,3	13	231
IKARIA	26,35	37,68					

11,314,58,13617810,214,16,45611,314,57,89612510,713,7820210,5165,88616112,715,410,232137

**TABLE OF DEVIATIONS
FROM NORMAL VALUES**

STATION	TMEAN (deviation) (I)	PRECI (deviation %) (II)
SERRES	-1,5	302
FLORINA		
THESSALONIKI	-1	286
ALEXANDROUPOLI	-0,2	156
KOZANI	-2,4	270
KERKYRA	-0,3	380
IOANNINA	-0,9	168
LARISA	-1,5	202
LIMNOS	0	217
AGHIALOS	-1,5	119
MYTILINI	-0,1	71
AGRINIO		
SKYROS	-0,7	292
ARGOSTOLI	-0,6	309
ARAXOS	-0,4	201
HIOS	0,3	102
HELLINIKO	-0,5	251
ZAKYNTHOS	-0,9	109
SAMOS	0,1	-
KALAMATA	-0,5	93
NAXOS		
METHONI		
SANTORINI	0,7	21
SOUDA	-0,3	39
RODOS	1,3	54
HERAKLIO	0,1	81
SITIA	-0,3	63

(I) deviation of mean temperature from normal values
 (II) deviation of monthly precipitation height from normal values %.

Climatic Bulletin

General Description

Precipitation amounts were higher than normal values mainly over Ionian area and locally over mainland while they were lower over the Cyclades.
The mean temperature varied lower than normal values almost everywhere, with the exception of the eastern parts Aegean area.

Climatic Parameters :

- ❖ **Normal Values** : normal values for various parameters (temperature, precipitation, etc) are defined as mean values calculated for 30 years. These normal values are used as basis and represent the mean situation. They can be specified in 10 daily, monthly, seasonally and yearly level and are used for the trend comparison of 10 days, month, season or year as: rainy decameron, mild winter, cool August etc.

Measurement :

- ❖ **Precipitation**
1 mm = 1 litre/m²

Table Legend :

Tmean : Mean Temperature
TN : Minimum Temperature
TX : Maximum Temperature
RR : Precipitation height(mm)
INST : Sun Duration (hours)

UTC hours (Universal Time Coordinates) in Greece :

- ❖ Winter : UTC hour = local hour - 2
- ❖ Summer : UTC hour = local hour - 3

© Hellenic National Meteorological Service
Reproduction is prohibited without written authorization
14 El.Venizelou 16777
Helliniko, Athens
Greece