




Climatic Bulletin

February 2022

 **Max
temperature**

 **Min
temperature**

 **Mean
temperature**

 **Precipitation**

 **Sunshine
duration**

February had the characteristics of a month of winter in Greece.

Significant snowfalls recorded over northwestern mountainous parts for two couples of days (1-2/2 and 27-28/2). Meanwhile a lot of rainfalls recorded over northeastern Aegean parts, Evia and Crete.

Also gale force winds affected the whole country for a long time.



Temperature

First 10-day period

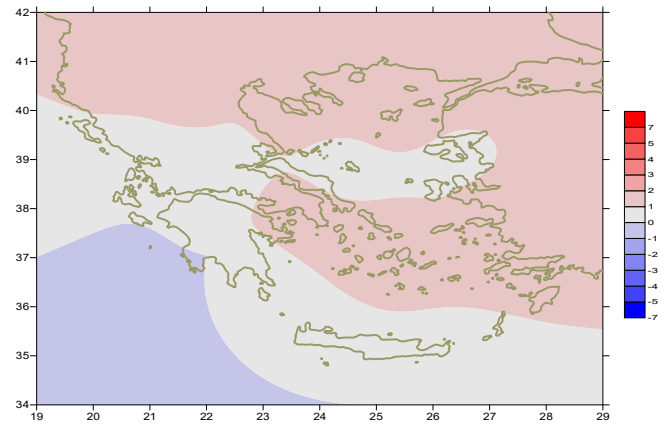
More specific (varied) :

Minimum:

from -11°C to 4°C over north mainland,
 from -5°C to 7°C over central mainland,
 from +2°C to 14°C over rest parts.

Maximum:

from 0°C to 16°C over north mainland,
 from -1°C to 20°C over central mainland,
 from 7°C to 20°C over rest parts.



Deviation of mean temperature from normal values

Second 10-day period

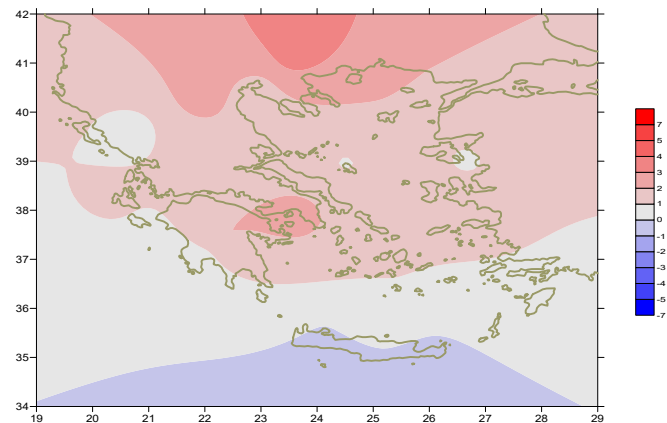
More specific (varied) :

Minimum:

from -7°C to 9°C over north mainland,
 from -4°C to 11°C over central mainland,
 from -1°C to 13°C over rest parts.

Maximum:

from 6°C to 20°C over north mainland,
 from 8°C to 19°C over central mainland,
 from 10°C to 21°C over rest parts.



Deviation of maximum temperature from normal values

Third 10-day period

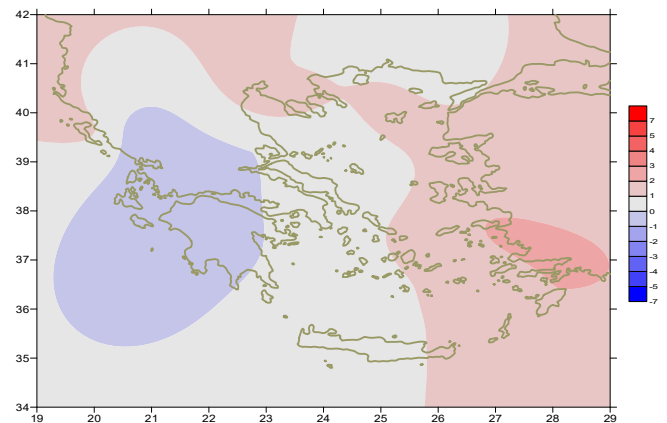
More specific (varied) :

Minimum:

from -8°C to 9°C over north mainland,
 from -2°C to 12°C over central mainland,
 from -1°C to 14°C over rest parts.

Maximum:

from 3°C to 18°C over north mainland,
 from 6°C to 22°C over central mainland,
 from 11°C to 21°C over rest parts.



Deviation of minimum temperature from normal values



P r e c i p i t a t i o n

First 10-day period

Locally large amounts of precipitation.

More specific:

23mm in Alexandroupoli, 17mm in Konitsa (1/2),
18mm in Soufli, 31mm in Alexandroupoli, 25mm in Kavala,
36mm in Argostoli, 22mm in Zakynthos, 29mm in Adravida,
33mm in Kalamata, 22mm in Tanagra, 41mm in Mitilini,
27mm in N.Filadelfia, 23mm in Mikonos (2/2),
33mm in Paros, 52mm in Santorini, 41mm in Mitilini (3/2),
18mm in Kasos (4/2), 23mm in Limnos (8/2), 26mm in Kasteli (9/2).

Δεύτερο δεκαήμερο Second 10-day period

Locally significant amounts of precipitation..

More specific:

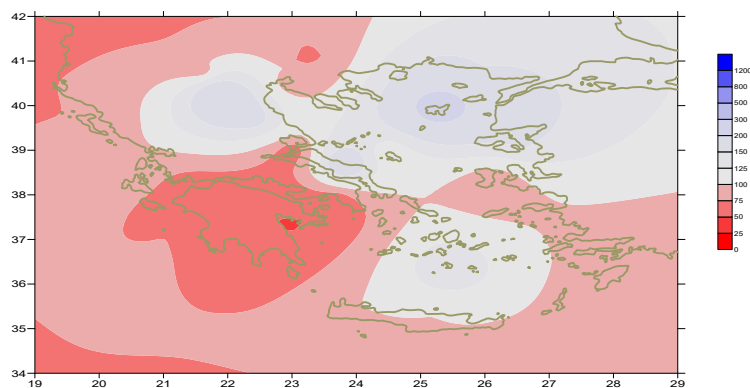
11mm in Orei (13/2), 30mm in Ioannina,
30mm in Kerkira (16/2),
13mm in Souda, 15mm in Gavdos (17/2).

Third 10-day period

Locally large amounts of precipitation.

More specific:

30mm in Soufli (21/2),
17mm in Kavala, 18mm in Kozani, 32mm in Sitia,
26mm in Souda, 35mm in Gavdos, 30mm in Limnos (23/2),
22mm in Heraklion, 25mm in Kasteli, 25mm in Kos (24/2),
25mm in Xanthi, 24mm in Kavala, 30mm in Edessa,
21mm in Florina, 27mm in KastoriaΚαστοριά, 25mm στην Κοζάνη,
32mm στα Ιωάννινα, 27m στην Κέρκυρα, 23mm στη Λάρισα,
30mm στην Τιθορέα, 36mm στους Σοφάδες, 40mm στη Λήμνο (27/2).



**Deviation of monthly precipitation height
from normal values (%)**

TABLE OF MEAN VALUES

STATION	Longitude	Latitude	Tmean	TX	TN	RR	INST
SERRES	23,53	41,07	8,2	14,1	2,4	32	136
FLORINA	21,40	40,78					
KASTORIA	21,27	40,45	5	11,3	-1,4	47	142
TRIKALA_IMATHIAS	22,55	40,60					
THESSALONIKI	22,97	40,52	8,5	12,5	4,2	24	152
CHRYSOUPOLI	24,62	40,92	7,7	12,3	3,3	83	144
ALEXANDROUPOLI	25,95	40,85	7,4	11,6	2,6	92	146
KOZANI	21,83	40,28	5,1	10,3	0,1	57	
KERKYRA	19,92	39,62	11,2	15,2	6,9	92	164
IOANNINA	20,82	39,70	7	12,4	0,6	123	132
PREVEZA	20,76	38,91	11	15,2	7	69	
TRIKALA_THESSALIAS	21,77	39,52					
LARISA	22,45	39,65	7,7	13,6	1,8	57	152
LIMNOS	25,23	39,92	9,5	12,7	6	103	144
ARTA	21,00	39,17					
AGHIALOS	22,78	39,21	8,2	13,5	3,5	48	161
MYTILINI	26,60	39,05	10,5	13,5	8,2	120	144
VELO	22,77	37,97					
AGRINIO	21,35	38,60					
LAMIA	22,43	38,87					
ANDRAVIDA	21,28	37,92	10,5	15,7	5,9	75	177
SKYROS	24,48	38,96	10,8	13,5	8,1	54	143
ARGOSTOLI	20,50	38,12	11,8	15,6	8,3	100	183
ARAXOS	21,42	38,15	10,7	15,4	5,9	39	169
TANAGRA	23,57	38,33					
HIOS	26,13	38,35	10,7	14,1	7,6	60	154
PYRGOS	21,42	37,67					
TRIPOLI	22,40	37,52	6,6	12,3	0,7	48	158
TATOI	23,78	38,10	8,9	13,5	4,5	42	
HELLINIKO	23,73	37,90	11,8	16,3	8,3	21	181
ELEYSINA	23,55	38,07	10,5	14,7	6,7	26	
ZAKYNTHOS	20,88	37,75	11	15,2	7,5	55	186
SAMOS	26,92	37,68	11,8	14,5	8,5		
ARGOS	22,75	37,63					
KALAMATA	22,02	37,07	10,7	16,4	5,5	65	174
NAXOS	25,37	37,10					
METHONI	21,70	36,82					
MHLOS	24,43	36,73					
SPATA	23,95	37,95	10,6	14,3	6,1	22	
KOS	27,08	36,80	12,7	15,2	10,8	40	
KYTHIRA	22,98	36,15					
SANTORINI	25,41	36,41	12,8	15,3	10,1	80	148
SOUDA	24,12	35,55	11,6	14,8	8,5	78	94
RODOS	28,08	36,40	13,3	15,9	10,7	53	149
MYKONOS	25,35	37,43	12,2	14,7	10,7	70	
HRAKLEIO	25,18	35,33	12,6	15,6	9,6	77	160
IERAPETRA	25,73	35,02					
SITEIA	26,10	35,21	12,6	15,5	10,5	71	121
RETHYMNO	24,50	35,36					
TYMPAKI	24,76	35,06					
KASTELI	25,33	35,18	10,1	13,2	7	133	132
KARPATIOS	27,15	35,42	13,9	16,1	12,2	48	
PAROS	25,13	37,02	12,3	14,7	10,4	82	142
SYROS	24,95	37,42	12,3	14,6	10,3	55	166
IKARIA	26,35	37,68					

11,314,58,13617810,214,16,45611,314,57,89612510,713,7820210,5165,88616112,715,410,232137

**TABLE OF DEVIATIONS
FROM NORMAL VALUES**

STATION	TMEAN (deviation) (I)	PRECI (deviation %) (II)
SERRES	1,9	75
FLORINA		
THESSALONIKI	1,8	60
ALEXANDROUPOLI	1,6	150
KOZANI	1,5	180
KERKYRA	0,9	68
IOANNINA	0,9	107
LARISA	0,9	163
LIMNOS	1,6	234
AGHIALOS	0,6	94
MYTILINI	0,7	124
AGRINIO		
SKYROS	0,6	85
ARGOSTOLI	0,1	88
ARAXOS	0,2	46
HIOS	0,9	72
HELLINIKO	1,3	44
ZAKYNTHOS	-0,5	49
SAMOS	1,8	-
KALAMATA	0	64
NAXOS		
METHONI		
SANTORINI	1,6	132
SOUDA	0,5	69
RODOS	1,3	45
HERAKLIO	0,4	100
SITIA	0,2	94

(I) deviation of mean temperature from normal values
 (II) deviation of monthly precipitation height from normal values %.

Climatic Bulletin

General Description

Precipitation amounts were higher enough than normal values over northeastern Aegean and over the islands of Evia and Crete. The mean temperature varied close to normal values.

Climatic Parameters :

- ❖ **Normal Values** : normal values for various parameters (temperature, precipitation, etc) are defined as mean values calculated for 30 years. These normal values are used as basis and represent the mean situation. They can be specified in 10 daily, monthly, seasonally and yearly level and are used for the trend comparison of 10 days, month, season or year as: rainy decameron, mild winter, cool August etc.

Measurement :

- ❖ **Precipitation**
1 mm = 1 litre/m²

Table Legend :

Tmean : Mean Temperature
 TN : Minimum Temperature
 TX : Maximum Temperature
 RR : Precipitation height(mm)
 INST : Sun Duration (hours)

UTC hours (Universal Time Coordinates) in Greece :

- ❖ Winter : UTC hour = local hour - 2
- ❖ Summer : UTC hour = local hour - 3

© Hellenic National Meteorological Service
 Reproduction is prohibited without written authorization
 14 El.Venizelou 16777
 Helliniko, Athens
 Greece