




Climatic Bulletin

June 2022

 **Max
temperature**

 **Min
temperature**

 **Mean
temperature**

 **Precipitation**

 **Sunshine
duration**

June was a warm month for the whole area. Also it was a very rainy month for the most parts of central and north country while strong thunderstorms affected them causing local floods. In a few cases hail caused damages to land under crop or to infrastructures in general.



Temperature

First 10-day period

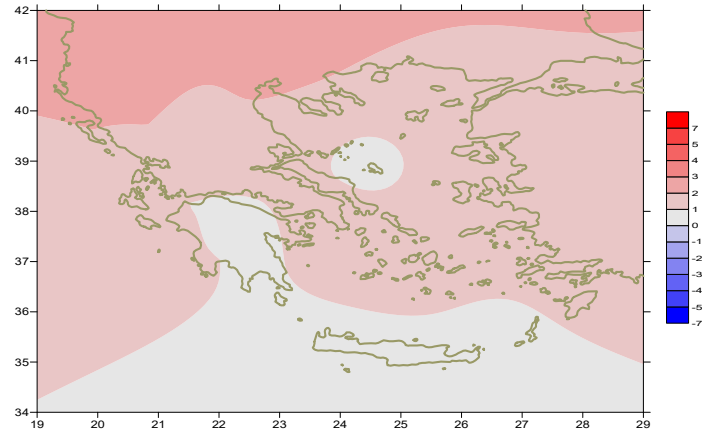
More specific (varied) :

Minimum:

from 8°C to 23°C over north mainland,
 from 12°C to 24°C over central mainland,
 from 18°C to 25°C over rest parts.

Maximum:

from 17°C to 36°C over north mainland,
 from 19°C to 36°C over central mainland,
 from 25°C to 32°C over rest parts.



Deviation of mean temperature from normal values

Second 10-day period

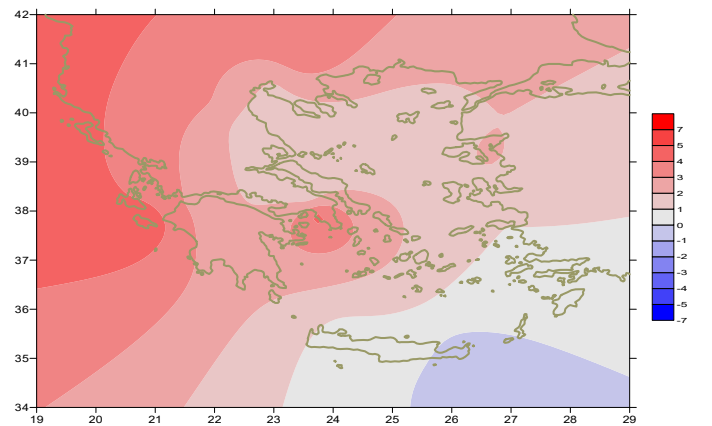
More specific (varied) :

Minimum:

from 8°C to 22°C over north mainland,
 from 12°C to 23°C over central mainland,
 from 19°C to 23°C over rest parts.

Maximum:

from 21°C to 33°C over north mainland,
 from 23°C to 33°C over central mainland,
 from 25°C to 31°C over rest parts.



Deviation of maximum temperature from normal values

Third 10-day period

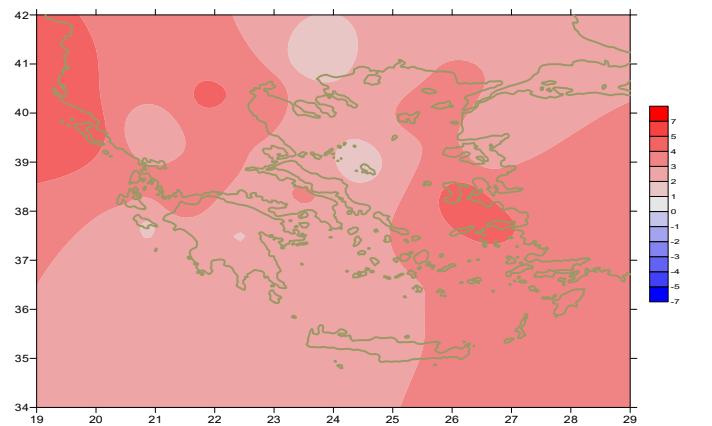
More specific (varied) :

Minimum:

from 10°C to 23°C over north mainland,
 from 14°C to 24°C over central mainland,
 from 16°C to 26°C over rest parts.

Maximum:

from 28°C to 37°C over north mainland,
 from 30°C to 42°C over central mainland,
 from 27°C to 36°C over rest parts.



Deviation of minimum temperature from normal values



P r e c i p i t a t i o n

First 10-day period

Locally significant amounts of precipitation.

More specific:

16mm in Aghialos (6/6), 14mm in Kozani (7/6),
12mm in Thessaloniki, 13mm in Serres, 18mm in Kozani (9/6),
54mm in Kavala, 28mm in Doxato, 18mm in Thessaloniki,
25mm in Edessa, 18mm in Serres, 33mm in Kozani, 25mm in Kastoria,
19mm in Preveza, 34mm in Konitsa, 21mm in Ioannina, 48mm in Araxos,
22mm in Antirio, 27mm in Larisa, 44mm in Kranea, 37mm in Aghialos,
20mm in Sofades (10/6).

Second 10-day period

Locally significant amounts of precipitation..

More specific:

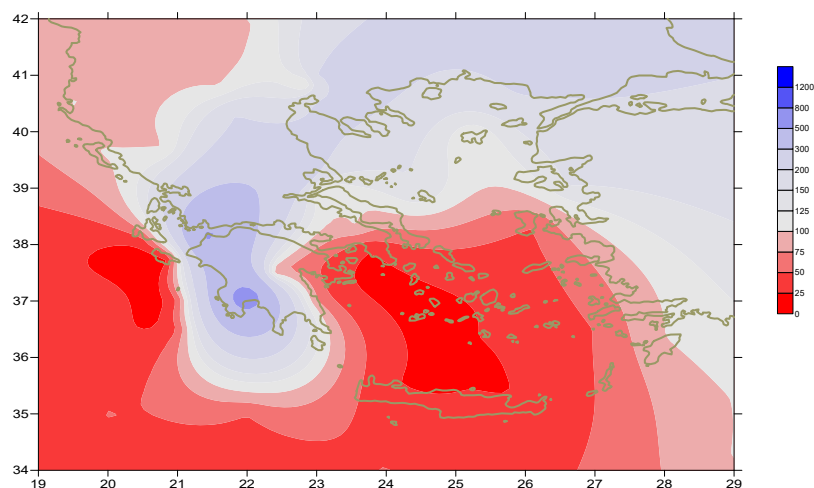
50mm in Kavala, 48mm in Chrissoupoli, 24mm in Doxato,
29mm in Skiathos, 15mm in Spata (11/6),
36mm in Alexandroupoli, 13mm in Ioannina (14/6),
15mm in Larisa (16/6),
24mm in Doxato, 12mm in Thessaloniki, 18mm in Kranea (18/6),
26mm in Kalamata (19/6).

Third 10-day period

Locally small amounts of precipitation.

More specific:

5mm in Doxato, 6mm in Aghialos (25/6),
9mm in Alexandroupoli, 14mm in Kavala, 6mm in Serres,
8mm in Doxato, 8mm in Limnos (26/6),
12mm in Serres, 6mm in Tripoli, 4mm in Tithorea (29/6).



**Deviation of monthly precipitation height
from normal values (%)**

TABLE OF MEAN VALUES

STATION	Longitude	Latitude	Tmean	TX	TN	RR	INST
SERRES	23,53	41,07	25,2	33,2	17,6	102	292
FLORINA	21,40	40,78					
KASTORIA	21,27	40,45	23,6	29,8	14,8	40	277
TRIKALA_IMATHIAS	22,55	40,60					
THESSALONIKI	22,97	40,52	26,7	30,9	19,6	62	299
CHRYSOUPOLI	24,62	40,92	24,8	28,7	18,8	83	280
ALEXANDROUPOLI	25,95	40,85	25,4	29,2	17,9	59	310
KOZANI	21,83	40,28	23,4	29,4	17,2	77	
KERKYRA	19,92	39,62	28,1	32	21,2	10	335
IOANNINA	20,82	39,70	24,9	31,2	14,6	37	288
PREVEZA	20,76	38,91	26,3	30,1	21	20	
TRIKALA_THESSALIAS	21,77	39,52					
LARISA	22,45	39,65	27,1	32,6	18,3	54	257
LIMNOS	25,23	39,92	25,2	28,3	20,1	16	335
ARTA	21,00	39,17					
AGHIALOS	22,78	39,21	26,3	30,5	19	60	326
MYTILINI	26,60	39,05	26,4	30,5	21,9	7	339
VELO	22,77	37,97					
AGRINIO	21,35	38,60					
LAMIA	22,43	38,87					
ANDRAVIDA	21,28	37,92	26,8	31,2	19,1	7	354
SKYROS	24,48	38,96	24,6	27,4	20,6	6	325
ARGOSTOLI	20,50	38,12	26,8	30,3	21,4	6	364
ARAXOS	21,42	38,15	27,2	31,3	20,1	48	355
TANAGRA	23,57	38,33	26,9	31,2	18,7	12	363
HIOS	26,13	38,35	26,2	29,1	21,8	7	328
PYRGOS	21,42	37,67					
TRIPOLI	22,40	37,52	23,2	29,6	13,8	18	299
TATOI	23,78	38,10	26,6	30,3	20,5	4	
HELLINIKO	23,73	37,90	27,8	32,8	22,7	0	338
ELEYSINA	23,55	38,07	28,5	32,6	22,9	2	
ZAKYNTHOS	20,88	37,75	28,2	32,5	20	2	380
SAMOS	26,92	37,68	27,2	30,4	22,3		
ARGOS	22,75	37,63					
KALAMATA	22,02	37,07	26,2	31,4	18,3	41	342
NAXOS	25,37	37,10					
METHONI	21,70	36,82					
MHLOS	24,43	36,73					
SPATA	23,95	37,95	26,7	30,3	20,8	15	
KOS	27,08	36,80	25,4	28,9	22		
KYTHIRA	22,98	36,15					
SANTORINI	25,41	36,41	25,4	28	22,5	0	345
SOUDA	24,12	35,55	26,1	29,3	21,2	0	380
RODOS	28,08	36,40	26,1	28,9	23,2	3	391
MYKONOS	25,35	37,43	25	27,1	21,9		
HRAKLEIO	25,18	35,33	25,6	27,8	21,6	0	368
IERAPETRA	25,73	35,02					
SITEIA	26,10	35,21	24,4	27,2	23	0	338
RETHYMNO	24,50	35,36					
TYMPAKI	24,76	35,06					
KASTELI	25,33	35,18	24,1	27,2	20,1	7	319
KARPATIOS	27,15	35,42	24,7	27,5	22,9	0	
PAROS	25,13	37,02	24,8	27,8	21,1	0	341
SYROS	24,95	37,42	25,5	28,3	22,3	0	346
IKARIA	26,35	37,68					

11,314,58,13617810,214,16,45611,314,57,89612510,713,7820210,5165,88616112,715,410,232137

**TABLE OF DEVIATIONS
FROM NORMAL VALUES**

STATION	TMEAN (deviation) (I)	PRECI (deviation %) (II)
SERRES	1.3	231
FLORINA		
THESSALONIKI	2.5	196
ALEXANDROUPOLI	2.4	216
KOZANI	2.1	199
KERKYRA	4.3	70
IOANNINA	3.2	79
LARISA	2.2	230
LIMNOS	1.9	73
AGHIALOS	1.9	284
MYTILINI	1.8	117
AGRINIO		
SKYROS	0.9	115
ARGOSTOLI	3.6	29
ARAXOS	3.2	533
HIOS	2.3	46
HELLINIKO	2.8	1
ZAKYNTHOS	4.1	28
SAMOS	2	-
KALAMATA	2.1	631
NAXOS		
METHONI		
SANTORINI	2	0
SOUDA	1.7	0
RODOS	1.4	103
HERAKLIO	1.3	1
SITIA	0	0

(I) deviation of mean temperature from normal values
 (II) deviation of monthly precipitation height from normal values %.

Climatic Bulletin

General Description

Precipitation amounts were very higher than normal values over the most parts of central and north country while lack of precipitation recorded over south Aegean area and Crete. The mean temperature varied higher enough than normal values everywhere.

Climatic Parameters :

- ❖ **Normal Values** : normal values for various parameters (temperature, precipitation, etc) are defined as mean values calculated for 30 years. These normal values are used as basis and represent the mean situation. They can be specified in 10 daily, monthly, seasonally and yearly level and are used for the trend comparison of 10 days, month, season or year as: rainy decameron, mild winter, cool August etc.

Measurement :

- ❖ **Precipitation**
1 mm = 1 litre/m²

Table Legend :

Tmean : Mean Temperature
 TN : Minimum Temperature
 TX : Maximum Temperature
 RR : Precipitation height(mm)
 INST : Sun Duration (hours)

UTC hours (Universal Time Coordinates) in Greece :

- ❖ Winter : UTC hour = local hour - 2
- ❖ Summer : UTC hour = local hour - 3

© Hellenic National Meteorological Service
 Reproduction is prohibited without written authorization
 14 El.Venizelou 16777
 Helliniko, Athens
 Greece