




# Climatic Bulletin

December 2022

 **Max  
temperature**

 **Min  
temperature**

 **Mean  
temperature**

 **Precipitation**

 **Sunshine  
duration**

In December the mean temperature values were higher enough than the normal ones.  
In contrast the mean precipitation values were lower over most parts while lack of precipitation recorded during the last ten days.



# Temperature

### First 10-day period

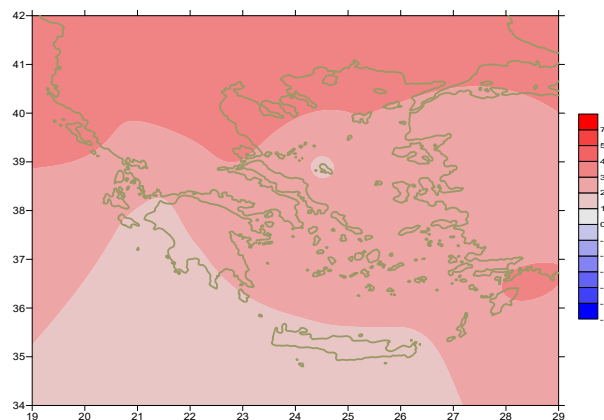
More specific (varied) :

**Minimum:**

from  $-1^{\circ}\text{C}$  to  $13^{\circ}\text{C}$  over north mainland,  
 from  $5^{\circ}\text{C}$  to  $16^{\circ}\text{C}$  over central mainland,  
 from  $7^{\circ}\text{C}$  to  $18^{\circ}\text{C}$  over rest parts.

**Maximum:**

from  $6^{\circ}\text{C}$  to  $18^{\circ}\text{C}$  over north mainland,  
 from  $6^{\circ}\text{C}$  to  $21^{\circ}\text{C}$  over central mainland,  
 from  $9^{\circ}\text{C}$  to  $22^{\circ}\text{C}$  over rest parts.



*Deviation of mean temperature from normal values*

### Second 10-day period

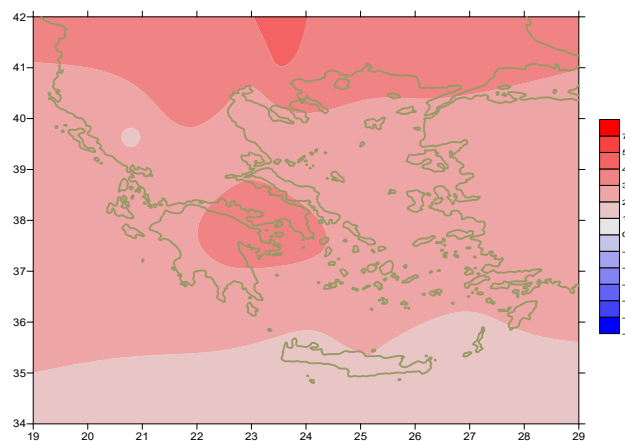
More specific (varied) :

**Minimum:**

from  $0^{\circ}\text{C}$  to  $16^{\circ}\text{C}$  over north mainland,  
 from  $3^{\circ}\text{C}$  to  $15^{\circ}\text{C}$  over central mainland,  
 from  $8^{\circ}\text{C}$  to  $18^{\circ}\text{C}$  over rest parts.

**Maximum:**

from  $5^{\circ}\text{C}$  to  $20^{\circ}\text{C}$  over north mainland,  
 from  $9^{\circ}\text{C}$  to  $23^{\circ}\text{C}$  over central mainland,  
 from  $11^{\circ}\text{C}$  to  $25^{\circ}\text{C}$  over rest parts.



*Deviation of maximum temperature from normal values*

### Third 10-day period

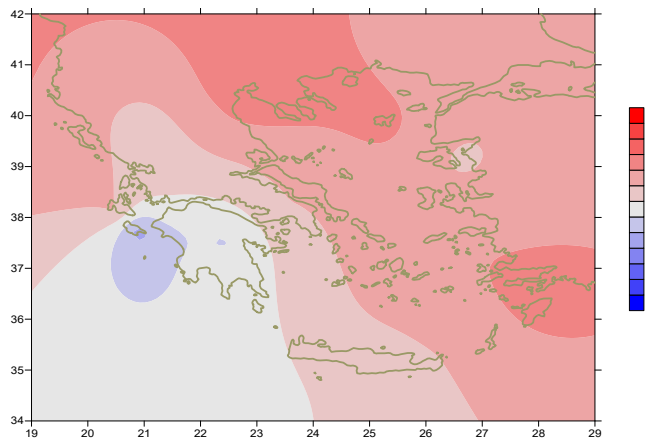
More specific (varied) :

**Minimum:**

from  $-6^{\circ}\text{C}$  to  $8^{\circ}\text{C}$  over north mainland,  
 from  $-5^{\circ}\text{C}$  to  $10^{\circ}\text{C}$  over central mainland,  
 from  $4^{\circ}\text{C}$  to  $14^{\circ}\text{C}$  over rest parts.

**Maximum:**

from  $7^{\circ}\text{C}$  to  $18^{\circ}\text{C}$  over north mainland,  
 from  $7^{\circ}\text{C}$  to  $20^{\circ}\text{C}$  over central mainland,  
 from  $10^{\circ}\text{C}$  to  $20^{\circ}\text{C}$  over rest parts.



*Deviation of minimum temperature from normal values*



## P r e c i p i t a t i o n

### First 10-day period

Significant amounts of precipitation.

More specific:

21mm in Thessaloniki, 33mm in Serres, 52mm in Polikastro, 46mm in Argostoli, 37mm in Zakynthos, 34mm in Andravida, 30mm in Araxos, 32mm in Kalamata, 43mm in Antirio, 40mm in Larisa, 21mm in Karistos, 35mm in Skiros, 21mm in Tripoli, 24mm in Siros, 45mm in Kasteli, 66mm in Chios, 87mm in Limnos, 23mm in Spata (1/12), 34mm in Leonidio (4/12), 37mm in Argostoli, 21mm in Kerkira (5/12), 37m in Zakynthos (6/12), 26mm in Methoni, 47mm in Zakynthos, 21mm in Gavdos (7/12), 36mm in Leros (8/12), 33mm in Kerkira (10/12).

### Second 10-day period

Significant amounts of precipitation .

More specific:

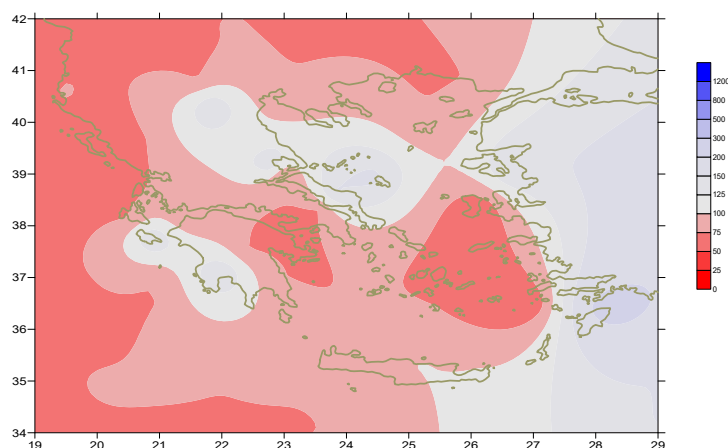
33mm in Ioannina, 23mm in Konitsa, 21mm in Zakynthos, 19mm in Andravida, 26mm in Argostoli, 27mm in Tripoli, 19mm in Leonidio, 17mm in Chios (11/12), 26mm in Argostoli, 23mm in Araxos (12/12), 62mm in Ikaria, 22mm in Argos (13/12), 17mm in Methoni, 30mm in Kithira (14/12).

### Third 10-day period

Lack of precipitation

More specific:

10mm in Kos (30/12), 3mm in Rodos (3/12).



**Deviation of monthly precipitation height  
from normal values (%)**

TABLE OF MEAN VALUES

STATION	Longitude	Latitude	Tmean	TX	TN	RR	INST
SERRES	23,53	41,07	8,7	13,2	4,8	57	85
FLORINA	21,40	40,78					
KASTORIA	21,27	40,45	7,4	12,5	3,1	30	84
TRIKALA_IMATHIAS	22,55	40,60					
THESSALONIKI	22,97	40,52	10,6	13,7	7,7	29	91
CHRYSOUPOLI	24,62	40,92	10	14,1	6,3	30	110
ALEXANDROUPOLI	25,95	40,85	10,3	13,9	6,9	51	102
KOZANI	21,83	40,28	7	11,6	3,6	34	
KERKYRA	19,92	39,62	14,5	18	11,5	95	93
IOANNINA	20,82	39,70	8,7	13,3	4,8	112	80
PREVEZA	20,76	38,91	13,8	17,6	11,3	84	
TRIKALA_THESSALIAS	21,77	39,52					
LARISA	22,45	39,65	9,5	13,4	5,8	57	78
LIMNOS	25,23	39,92	12,3	15,2	10	112	102
ARTA	21,00	39,17					
AGHIALOS	22,78	39,21	11,2	15,3	8,2	34	116
MYTILINI	26,60	39,05	13,6	16,5	11,5	40	117
VELO	22,77	37,97					
AGRINIO	21,35	38,60					
LAMIA	22,43	38,87					
ANDRAVIDA	21,28	37,92	13,3	18,2	9,4	92	107
SKYROS	24,48	38,96	13,5	16,4	11,5	37	114
ARGOSTOLI	20,50	38,12	15,2	18,2	12,8	158	149
ARAXOS	21,42	38,15	13,4	17,8	9,5	101	155
TANAGRA	23,57	38,33					
HIOS	26,13	38,35	13,8	17,1	10,9	102	124
PYRGOS	21,42	37,67					
TRIPOLI	22,40	37,52	8,9	14,5	3,8	57	117
TATOI	23,78	38,10	11,7	16	8,3	33	
HELLINIKO	23,73	37,90	14,6	18,5	11,7	20	159
ELEYSINA	23,55	38,07	13,5	17,5	10,2	18	
ZAKYNTHOS	20,88	37,75	14,7	18,2	10	166	141
SAMOS	26,92	37,68	14,5	17,2	12,1		
ARGOS	22,75	37,63					
KALAMATA	22,02	37,07	13,5	19,3	8,9	71	152
NAXOS	25,37	37,10					
METHONI	21,70	36,82					
MHLOS	24,43	36,73					
SPATA	23,95	37,95	13,4	16,9	9,1	29	
KOS	27,08	36,80	15,3	17,6	13,8	23	
KYTHIRA	22,98	36,15					
SANTORINI	25,41	36,41	15,5	17,9	12,6	4	162
SOUDA	24,12	35,55	14,5	17,9	11,9	17	144
RODOS	28,08	36,40	16,5	18,9	14,5	38	159
MYKONOS	25,35	37,43	14,8	17,6	13,6	10	
HRAKLEIO	25,18	35,33	15,6	19	12,6	4	159
IERAPETRA	25,73	35,02					
SITEIA	26,10	35,21	15,7	18,4	13,9	7	158
RETHYMNO	24,50	35,36					
TYMPAKI	24,76	35,06					
KASTELI	25,33	35,18	12,8	16,8	9,3	34	171
KARPATIOS	27,15	35,42	16,7	18,9	15,4	32	
PAROS	25,13	37,02	14,8	17,6	12,9	12	147
SYROS	24,95	37,42	15,3	17,6	13,3	24	143
IKARIA	26,35	37,68					

11,314,58,13617810,214,16,45611,314,57,89612510,713,7820210,5165,88616112,715,410,232137

**TABLE OF DEVIATIONS  
FROM NORMAL VALUES**

<b>STATION</b>	<b>TMEAN ( deviation ) (I)</b>	<b>PRECI (deviation % ) (II)</b>
SERRES	3.8	130
FLORINA		
THESSALONIKI	3.9	55
ALEXANDROUPOLI	3.3	59
KOZANI	3.4	63
KERKYRA	3.4	53
IOANNINA	2.9	65
LARISA	3.2	109
LIMNOS	3	140
AGHIALOS	3.2	53
MYTILINI	2.3	28
AGRINIO		
SKYROS	1.8	47
ARGOSTOLI	2.3	126
ARAXOS	1.9	77
HIOS	2.7	88
HELLINIKO	2.6	30
ZAKYNTHOS	1.9	98
SAMOS	2.4	-
KALAMATA	1.9	46
NAXOS		
METHONI		
SANTORINI	2.7	7
SOUDA	1.9	18
RODOS	3.1	26
HERAKLIO	1.8	5
SITIA	1.7	8

(I) deviation of mean temperature from normal values  
 (II) deviation of monthly precipitation height from normal values %.

# Climatic Bulletin

## General Description

Precipitation amounts were lower than normal values over most parts. The mean temperature varied higher enough than normal values everywhere.

### Climatic Parameters :

- ❖ **Normal Values** : normal values for various parameters (temperature, precipitation, etc) are defined as mean values calculated for 30 years. These normal values are used as basis and represent the mean situation. They can be specified in 10 daily, monthly, seasonally and yearly level and are used for the trend comparison of 10 days, month, season or year as: rainy decameron, mild winter, cool August etc.

### Measurement :

- ❖ **Precipitation**  
1 mm = 1 litre/m<sup>2</sup>

### Table Legend :

Tmean : Mean Temperature  
 TN : Minimum Temperature  
 TX : Maximum Temperature  
 RR : Precipitation height(mm)  
 INST : Sun Duration (hours)

### UTC hours (Universal Time Coordinates) in Greece :

- ❖ Winter : UTC hour = local hour - 2
- ❖ Summer : UTC hour = local hour - 3

© Hellenic National Meteorological Service  
 Reproduction is prohibited without written authorization  
 14 El.Venizelou 16777  
 Helliniko, Athens  
 Greece