




Climatic Bulletin

January 2023

 **Max
temperature**

 **Min
temperature**

 **Mean
temperature**

 **Precipitation**

 **Sunshine
duration**

January was a warm month for the whole country. Also the mean precipitation values were higher than normal ones mainly over the west and north parts. It is remarkable that large amounts of snow recorded over the tops of the mountainous regions (above 1500 meters) but only during the last ten days.



Temperature

First 10-day period

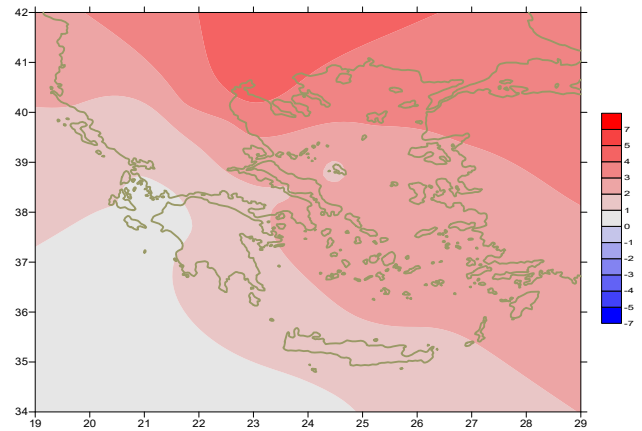
More specific (varied) :

Minimum:

from -7°C to 11°C over north mainland,
 from -2°C to 14°C over central mainland,
 from -4°C to 15°C over rest parts.

Maximum:

from 1°C to 16°C over north mainland,
 from 5°C to 19°C over central mainland,
 from 14°C to 19°C over rest parts.



Deviation of mean temperature from normal values

Second 10-day period

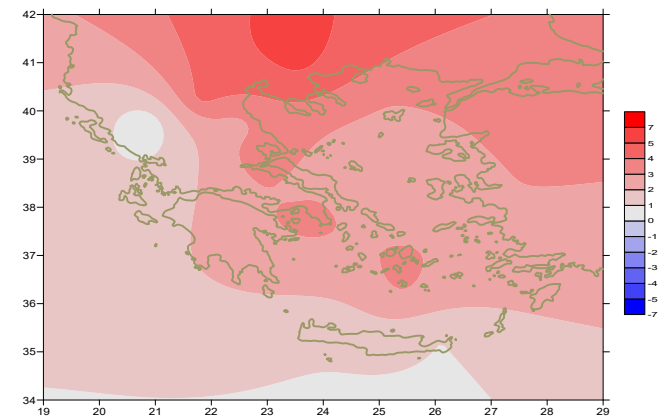
More specific (varied) :

Minimum:

from -5°C to 15°C over north mainland,
 from -2°C to 16°C over central mainland,
 from -4°C to 17°C over rest parts.

Maximum:

from 2°C to 20°C over north mainland,
 from 5°C to 23°C over central mainland,
 from 10°C to 20°C over rest parts.



Deviation of maximum temperature from normal values

Third 10-day period

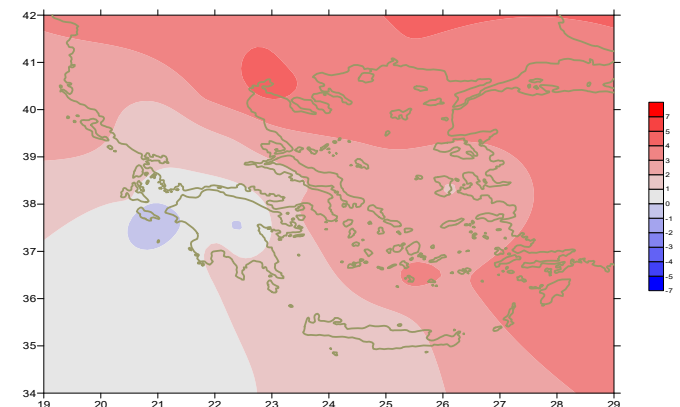
More specific (varied) :

Minimum:

from -5°C to 11°C over north mainland,
 from -2°C to 11°C over central mainland,
 from -1°C to 13°C over rest parts.

Maximum:

from 2°C to 17°C over north mainland,
 from 3°C to 18°C over central mainland,
 from 8°C to 20°C over rest parts.



Deviation of minimum temperature from normal values



P r e c i p i t a t i o n

First 10-day period

Significant amounts of precipitation.

More specific:

47mm in Alexandroupoli, 24mm in Chrisoupoli/Kavala, 27mm in Spetses, 25mm in Preveza/Aktio, 39mm in Ioannina, 22mm in Argostoli, 25mm in Kerkira, 40mm in Zakynthos, 41mm in Adravida, 28mm in Araxos, 40mm in Antirio, 23mm in Mesologi, 37mm in Tripoli, 26mm in Limnos (10/1).

Second 10-day period

Significant amounts of precipitation .

More specific:

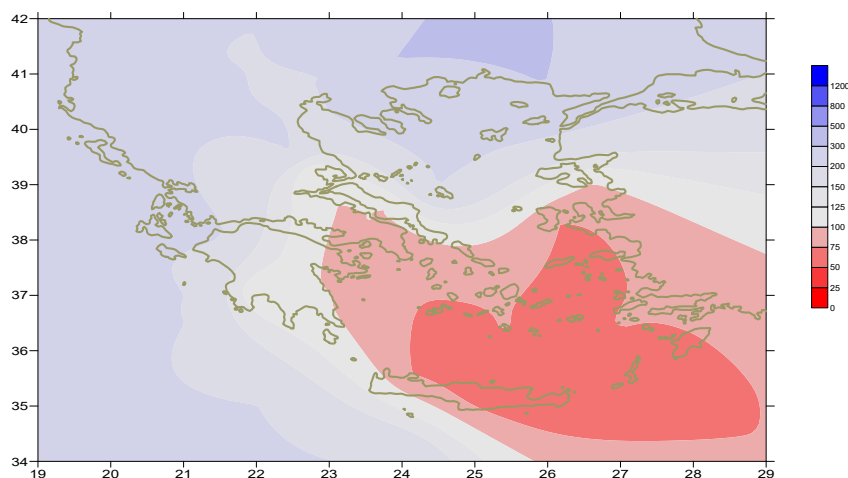
39mm in Kalimnos, 23mm in Kos, 28mm in Rodos (11/1), 29mm in Skiros (12/1), 37mm in Ikaria (13/1), 30mm in Kithira, 47mm in Souda, 24mm in Gavdos(15/1), 37mm in Ioannina, 37mm in Kos, 21mm in Kozani, 23mm in Preveza, 25mm in Kerkira, 41mm in Araxos, 32mm in Mesologi (20/1).

Third 10-day period

Significant amounts of precipitation .

More specific:

126mm in Kos, 28mm in Mesologi (21/1), 25mm in Kalamata (22/1), 24mm in Serres, 46mm in Ioannina, 31mm in Kos, 29mm in Adravida, 89mm in Kerkira (23/1), 23mm in Thesaloniki, 23mm in Polikastro (24/1), 29mm in Kalamata, 32mm in Spata, 51mm in Tanagra, 40mm in Elefsina, 30mm in Argos, 82mm in Limnos, 54mm in Tatoi, 41mm in Kotroni, 50mm in N.Filadelfeia (26/1), 44mm in Chios, 51mm in Mitilini, 37mm in Leros (27/1), 10mm in Heraklion (30/1), 13mm in Souda (31/1).



**Deviation of monthly precipitation height
from normal values (%)**

TABLE OF MEAN VALUES

STATION	Longitude	Latitude	Tmean	TX	TN	RR	INST
SERRES	23,53	41,07	8,1	13,1	3,4	84	100
FLORINA	21,40	40,78					
KASTORIA	21,27	40,45	5	10,5	0,1	49	116
TRIKALA_IMATHIAS	22,55	40,60					
THESSALONIKI	22,97	40,52	9,6	13,4	5,8	57	165
CHRYSOUPOLI	24,62	40,92	9,3	12,8	5,9	88	92
ALEXANDROUPOLI	25,95	40,85	8,5	12	5	143	85
KOZANI	21,83	40,28	5,3	10	1,8	77	
KERKYRA	19,92	39,62	11,4	15,4	7,6	205	102
IOANNINA	20,82	39,70	5,6	10,5	1,3	207	91
PREVEZA	20,76	38,91	11,2	15,2	8,4	188	
TRIKALA_THESSALIAS	21,77	39,52					
LARISA	22,45	39,65	7,7	12,1	2,9	51	110
LIMNOS	25,23	39,92	10,7	13,5	8,1	158	123
ARTA	21,00	39,17					
AGHIALOS	22,78	39,21	9,1	14,4	4,9	33	157
MYTILINI	26,60	39,05	12,1	14,9	9,4	104	134
VELO	22,77	37,97					
AGRINIO	21,35	38,60					
LAMIA	22,43	38,87					
ANDRAVIDA	21,28	37,92	11,2	15,6	7,2	247	108
SKYROS	24,48	38,96	11,8	14,3	10	128	103
ARGOSTOLI	20,50	38,12	12,6	16	9,7	199	150
ARAXOS	21,42	38,15	10,9	15,4	6,8	203	156
TANAGRA	23,57	38,33	9,4	14,5	5,1	62	149
HIOS	26,13	38,35	11,6	15,4	7,9	78	146
PYRGOS	21,42	37,67					
TRIPOLI	22,40	37,52	6,2	12,1	0,7	141	139
TATOI	23,78	38,10	9,5	14,3	5,3	78	
HELLINIKO	23,73	37,90	12,7	16,7	9,5	19	174
ELEYSINA	23,55	38,07	11,5	15,7	7,8	74	
ZAKYNTHOS	20,88	37,75	11,9	15,8	7,2	283	150
SAMOS	26,92	37,68	12,8	16,3	9,4		
ARGOS	22,75	37,63					
KALAMATA	22,02	37,07	11,5	17,5	6,9	109	163
NAXOS	25,37	37,10					
METHONI	21,70	36,82					
MHLOS	24,43	36,73					
SPATA	23,95	37,95	11	14,9	6,8	66	
KOS	27,08	36,80	13,5	15,9	12	59	
KYTHIRA	22,98	36,15					
SANTORINI	25,41	36,41	14,3	16,4	12,3	42	174
SOUDA	24,12	35,55	12,1	15,7	9	104	91
RODOS	28,08	36,40	14,4	17,3	12,4	81	187
MYKONOS	25,35	37,43	13,5	16,1	12,1	37	
HRAKLEIO	25,18	35,33	13,4	16,8	10,4	44	167
IERAPETRA	25,73	35,02					
SITEIA	26,10	35,21	13,8	16,5	11,8	29	162
RETHYMNO	24,50	35,36					
TYMPAKI	24,76	35,06					
KASTELI	25,33	35,18	11	14,4	8,1	42	169
KARPATIOS	27,15	35,42	15,1	17,6	13,8	46	
PAROS	25,13	37,02	13,2	16,1	10,9	45	180
SYROS	24,95	37,42	13,4	15,8	11,2	51	173
IKARIA	26,35	37,68					

11,314,58,13617810,214,16,45611,314,57,89612510,713,7820210,5165,88616112,715,410,232137

**TABLE OF DEVIATIONS
FROM NORMAL VALUES**

STATION	TMEAN (deviation) (I)	PRECI (deviation %) (II)
SERRES	4.3	238
FLORINA		
THESSALONIKI	4.6	155
ALEXANDROUPOLI	3.7	237
KOZANI	3.3	195
KERKYRA	1.8	156
IOANNINA	1	159
LARISA	2.6	172
LIMNOS	3.2	219
AGHIALOS	2.7	69
MYTILINI	2.8	80
AGRINIO		
SKYROS	1.9	164
ARGOSTOLI	1	170
ARAXOS	0.8	210
HIOS	2	67
HELLINIKO	2.5	42
ZAKYNTHOS	0.6	188
SAMOS	2.5	-
KALAMATA	1.3	96
NAXOS		
METHONI		
SANTORINI	3	65
SOUDA	1.3	73
RODOS	2.7	55
HERAKLIO	1.4	48
SITIA	1.5	32

(I) deviation of mean temperature from normal values
 (II) deviation of monthly precipitation height from normal values %.

Climatic Bulletin

General Description

Precipitation amounts were higher than normal values over the most parts and mainly over the west and north ones. The mean temperature varied higher enough than normal values everywhere.

Climatic Parameters :

- ❖ **Normal Values** : normal values for various parameters (temperature, precipitation, etc) are defined as mean values calculated for 30 years. These normal values are used as basis and represent the mean situation. They can be specified in 10 daily, monthly, seasonally and yearly level and are used for the trend comparison of 10 days, month, season or year as: rainy decameron, mild winter, cool August etc.

Measurement :

- ❖ **Precipitation**
1 mm = 1 litre/m²

Table Legend :

Tmean : Mean Temperature
 TN : Minimum Temperature
 TX : Maximum Temperature
 RR : Precipitation height(mm)
 INST : Sun Duration (hours)

UTC hours (Universal Time Coordinates) in Greece :

- ❖ Winter : UTC hour = local hour - 2
- ❖ Summer : UTC hour = local hour - 3

© Hellenic National Meteorological Service
 Reproduction is prohibited without written authorization
 14 El.Venizelou 16777
 Helliniko, Athens
 Greece