




Climatic Bulletin

September 2023

 Max
temperature

 Min
temperature

 Mean
temperature

 Precipitation

 Sunshine
duration

In September several records of precipitation values were broken over Thessaly, north Evia, Sporades and eastern Sterea due to the passage of two deep barometric lows through the area of Greece, namely Daniel (5-7/9) and Elias (26-28/9).

Long lasting intense rainfalls and thunderstorms prevailed over the above mentioned areas and caused severe floods. All those tough weather conditions in combination with other factors caused devastation.



ΕΘΝΙΚΗ
ΜΕΤΕΩΡΟΛΟΓΙΚΗ
ΥΠΗΡΕΣΙΑ
HELLENIC NATIONAL METEOROLOGICAL SERVICE



Temperature

First 10-day period

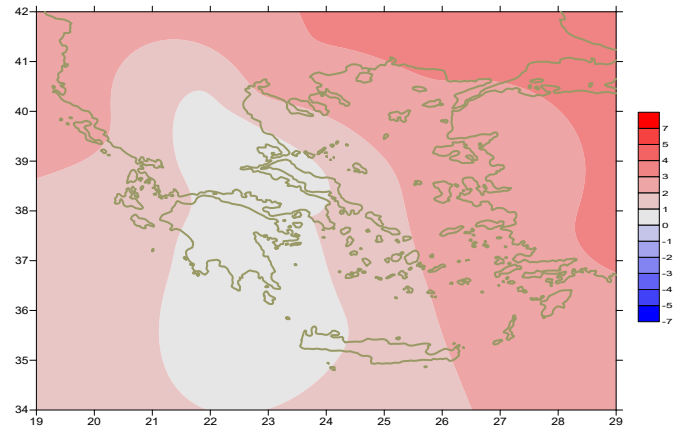
More specific (varied) :

Minimum:

from 7.7°C to 23°C over north mainland,
 from 11°C to 22°C over central mainland,
 from 18°C to 26°C over rest parts.

Maximum:

from 19°C to 35°C over north mainland,
 from 17°C to 34°C over central mainland,
 from 20°C to 32°C over rest parts.



Deviation of mean temperature from normal values

Second 10-day period

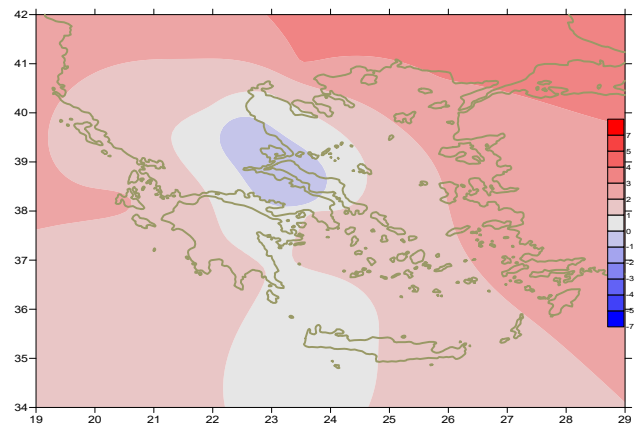
More specific (varied) :

Minimum:

from 6.4°C to 22°C over north mainland,
 from 12°C to 23°C over central mainland,
 from 19°C to 24°C over rest parts.

Maximum:

from 27°C to 34°C over north mainland,
 from 26°C to 33°C over central mainland,
 from 25°C to 33°C over rest parts.



Deviation of maximum temperature from normal values

Third 10-day period

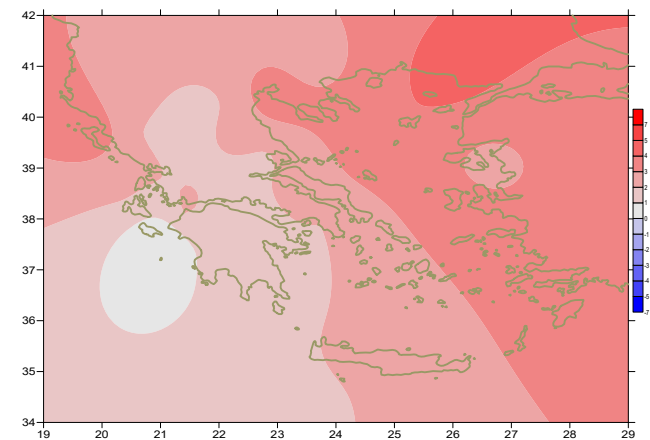
More specific (varied) :

Minimum:

from 7.3°C to 22°C over north mainland,
 from 11.6°C to 22°C over central mainland,
 from 18°C to 24°C over rest parts.

Maximum:

from 27°C to 37.5°C over north mainland,
 from 29°C to 36°C over central mainland,
 from 28°C to 36°C over rest parts.



Deviation of minimum temperature from normal values



P r e c i p i t a t i o n

First 10-day period

Very high amounts of precipitation mainly over east mainland.
More specific:

20mm in Doxato, 37mm in Argostoli, 20mm in Kalamata,
23mm in Oreoi, 31mm in Lamia, 15mm in Tripoli (4/9),
31mm in Kozani, 35mm in Zakynthos, 102mm in Larisa, 70mm in Kranea,
147mm in Aghialos, 20mm in Argos, 24mm in Kithira (5/9),
24mm in Larisa, 27mm in Kranea, 155mm in Aghialos, 94mm in Skiathos,
93mm in Lamia, 71mm in Tanagra, 27mm in Tripoli, 62mm in Argos,
23mm in Souda, 81mm in Spataq, 42mm in Tatoi, 66mm in Helliniko,
46mm in Elefsina, 39mm in Kotroni (6/9),
37mm in Larisa, 31mm in Kranea, 43mm in Aghialos, 20mm in Skiathos,
29mm in Lamia, 41mm in Sofades, 24mm in Tatoi, 21mm in Spata,
16mm in Elefsina, 17mm in Helliniko, 20mm in Kotroni (7/9).

Δεύτερο δεκαήμερο Second 10-day period

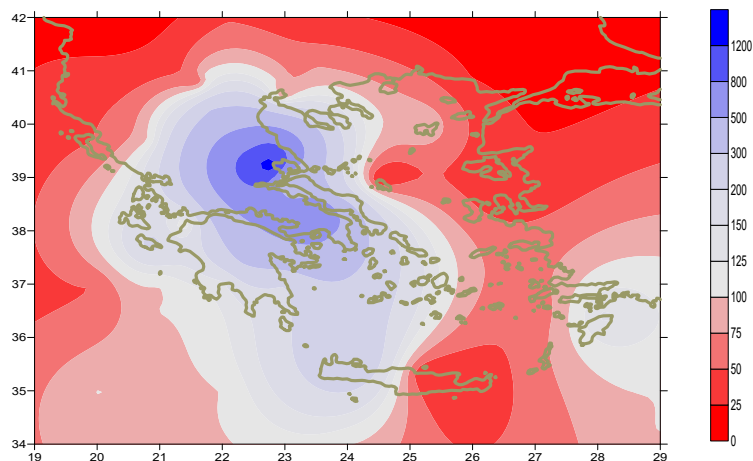
Lack of precipitation.

Third 10-day period

Locally significant amounts of precipitation.

More specific:

20mm in Tripoli (25/9),
14mm in Kastoria, 16mm in Kozani, 18mm in Adravida,
18mm in Argos, 14mm in Leonidio (26/9),
10mm in Larisa, 15mm in Antirio, 14mm in Messologi,
71mm in Aghialos, 37mm in Skiathos, 42mm in Tanagra, 14mm in Leonidio,
13mm in Souda, 20mm in Spata, 13mm in Elefsina,
13mm in Helliniko, 44mm in Tatoi, 13mm in Elefsina, 30mm in Kotroni (27/9),
17mm in Larisa, 24mm in Aghialos, 28mm in Chios (28/9),
14mm in Souda (29/9).



**Deviation of monthly precipitation height
from normal values (%)**

TABLE OF MEAN VALUES

STATION	Longitude	Lattitude	Tmean	TX	TN	RR	INST
SERRES	23,53	41,07	24,6	30,6	16,8	15	198
FLORINA	21,40	40,78					
KASTORIA	21,27	40,45	20,3	27,7	12,3	41	203
TRIKALA_IMATHIAS	22,55	40,60					
THESSALONIKI	22,97	40,52	24,2	28,5	18,7	15	234
CHRYSOUPOLI	24,62	40,92	23,7	29	17,1	4	245
ALEXANDROUPOLI	25,95	40,85	24,9	29,9	18,7		268
KOZANI	21,83	40,28	20,3	26,7	14,2	77	
KERKYRA	19,92	39,62	25,1	29,6	20	34	259
IOANNINA	20,82	39,70	21,7	28,3	14,1	53	218
PREVEZA	20,76	38,91	24,4	28,8	20,1	21	
TRIKALA_THESSALIAS	21,77	39,52					
LARISA	22,45	39,65	22,7	28,1	16,8	200	192
LIMNOS	25,23	39,92	24	27,4	20,5	18	258
ARTA	21,00	39,17					
AGHIALOS	22,78	39,21	22,7	26,9	17,5	448	213
MYTILINI	26,60	39,05	25,6	29,4	21	0	282
VELO	22,77	37,97					
AGRINIO	21,35	38,60					
LAMIA	22,43	38,87					
ANDRAVIDA	21,28	37,92	23,9	29,9	17,3	40	234
SKYROS	24,48	38,96					
ARGOSTOLI	20,50	38,12	24,7	28,8	20,7	47	246
ARAXOS	21,42	38,15	24,8	30,3	19	20	235
TANAGRA	23,57	38,33	22,8	27,2	17,6	136	229
HIOS	26,13	38,35	25,5	28,6	21,2	28	284
PYRGOS	21,42	37,67					
TRIPOLI	22,40	37,52	20,2	27,2	12,7	90	210
TATOI	23,78	38,10	23,6	27,8	19,1	110	
HELLINIKO	23,73	37,90	25,3	29,6	21,9	96	239
ELEYSINA	23,55	38,07	25,3	29,2	21,4	78	
ZAKYNTHOS	20,88	37,75	25	29,2	18,8	58	256
SAMOS	26,92	37,68	27,7	31,5	22,7		
ARGOS	22,75	37,63					
KALAMATA	22,02	37,07	24,1	30,4	17,5	31	242
NAXOS	25,37	37,10					
METHONI	21,70	36,82					
MHLOS	24,43	36,73					
SPATA	23,95	37,95	24,4	27,9	19,6	122	
KOS	27,08	36,80	26,4	29,7	23,4	5	
KYTHIRA	22,98	36,15					
SANTORINI	25,41	36,41					
SOUDA	24,12	35,55	23,8	27,5	20,4	56	202
RODOS	28,08	36,40	27,8	30,7	24,6	11	316
MYKONOS	25,35	37,43	23,9	26,3	21,9	4	
HRAKLEIO	25,18	35,33	25,1	27,8	21,4	3	276
IERAPETRA	25,73	35,02					
SITEIA	26,10	35,21					
RETHYMNO	24,50	35,36					
TYMPAKI	24,76	35,06					
KASTELI	25,33	35,18	23,4	27,5	19,9	0	235
KARPATOS	27,15	35,42	26,1	28,9	24,1	10	
PAROS	25,13	37,02	24,3	27,1	21,8	1	260
SYROS	24,95	37,42	24,9	27,4	22,3	22	255
IKARIA	26,35	37,68					

11,314,58,13617810,214,16,45611,314,57,89612510,713,7820210,5165,88616112,715,410,232137

**TABLE OF DEVIATIONS
FROM NORMAL VALUES**

STATION	TMEAN (deviation) (I)	PRECI (deviation %) (II)
SERRES	2,9	72
FLORINA		
THESSALONIKI	2,4	57
ALEXANDROUPOLI	2,9	-
KOZANI	0,8	235
KERKYRA	2,4	45
IOANNINA	1,4	97
LARISA	0,7	680
LIMNOS	2,6	92
AGHIALOS	0,5	1436
MYTILINI	2,3	-
AGRINIO		
SKYROS		
ARGOSTOLI	1,2	157
ARAXOS	1,3	89
HIOS	2,5	33
HELLINIKO	1	600
ZAKYNTHOS	1,2	228
SAMOS	2,9	-
KALAMATA	0,8	110
NAXOS		
METHONI		
SANTORINI		
SOUDA	0,8	300
RODOS	2,9	155
HERAKLIO	1,6	15
SITIA		

(I) deviation of mean temperature from normal values
 (II) deviation of monthly precipitation height from normal values %.

Climatic Bulletin

General Description

Precipitation amounts were higher enough than normal values mainly over Thessaly, north Evia, Sporades and east Sterea. The mean temperature varied higher than normal values everywhere.

Climatic Parameters :

- ❖ **Normal Values** : normal values for various parameters (temperature, precipitation, etc) are defined as mean values calculated for 30 years. These normal values are used as basis and represent the mean situation. They can be specified in 10 daily, monthly, seasonally and yearly level and are used for the trend comparison of 10 days, month, season or year as: rainy decameron, mild winter, cool August etc.

Measurement :

- ❖ **Precipitation**
1 mm = 1 litre/m²

Table Legend :

Tmean : Mean Temperature
 TN : Minimum Temperature
 TX : Maximum Temperature
 RR : Precipitation height(mm)
 INST : Sun Duration (hours)

UTC hours (Universal Time Coordinates) in Greece :

- ❖ Winter : UTC hour = local hour - 2
- ❖ Summer : UTC hour = local hour - 3

© Hellenic National Meteorological Service
 Reproduction is prohibited without written authorization
 14 El.Venizelou 16777
 Helliniko, Athens
 Greece