




Climatic Bulletin

October 2023

 **Max
temperature**

 **Min
temperature**

 **Mean
temperature**

 **Precipitation**

 **Sunshine
duration**

The mean temperature values which recorded in October 2023 were the highest ones among the last 15 years, for every Greek region.
In contrast the precipitation amounts were lower enough than the normal values, mainly over eastern and southern parts of Greece.



Temperature

First 10-day period

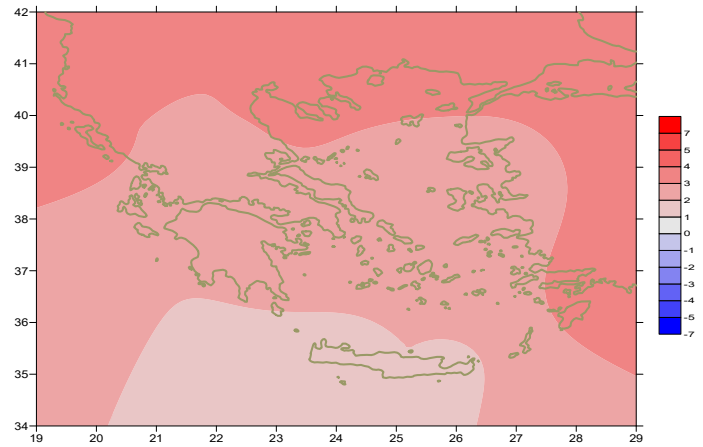
More specific (varied) :

Minimum:

from 3°C to 20°C over north mainland,
 from 6°C to 22°C over central mainland,
 from 13°C to 23°C over rest parts.

Maximum:

from 23°C to 30°C over north mainland,
 from 18°C to 30°C over central mainland,
 from 23°C to 28°C over rest parts.



Deviation of mean temperature from normal values

Second 10-day period

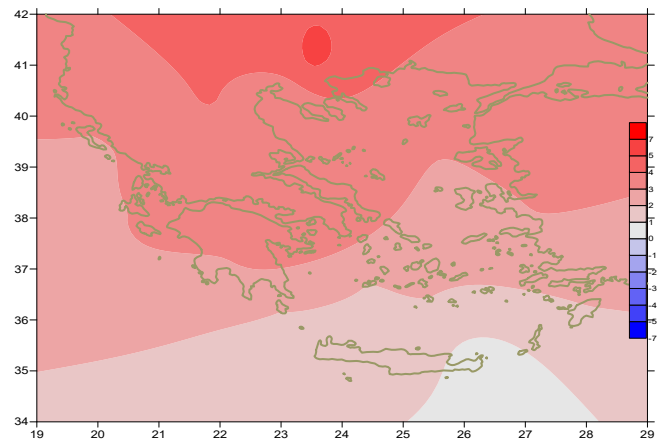
More specific (varied) :

Minimum:

from 2.5°C to 16°C over north mainland,
 from 4°C to 21°C over central mainland,
 from 11°C to 22°C over rest parts.

Maximum:

from 14°C to 30°C over north mainland,
 from 12°C to 30°C over central mainland,
 from 19°C to 28°C over rest parts.



Deviation of maximum temperature from normal values

Third 10-day period

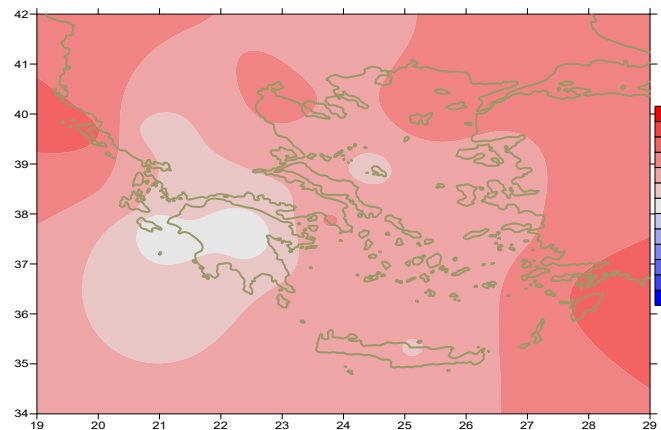
More specific (varied) :

Minimum:

from 2°C to 18°C over north mainland,
 from 6°C to 21°C over central mainland,
 from 12°C to 22°C over rest parts.

Maximum:

from 20°C to 30°C over north mainland,
 from 23°C to 31°C over central mainland,
 from 24°C to 28°C over rest parts.



Deviation of minimum temperature from normal values



Precipitation

First 10-day period

Low amounts of precipitation only over west mainland.
More specific:

3mm in Kalamata (1/10), 5mm in Konitsa (6/10),
11mm in Kalamata, 7mm in Konitsa (7/10).

Second 10-day period

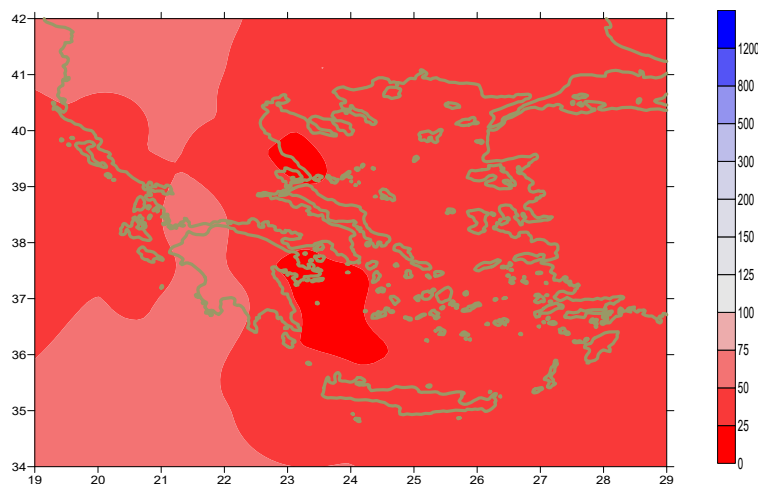
Locally remarkable amounts of precipitation.
More specific:

10mm in Kerkira (16/10),
8mm in Serres, 20mm in Edessa, 7mm in Kastoria,
8mm in Kozani, 28mm in Preveza, 19mm in Ioannina,
16mm in Kerkira, 27mm in Othonoi, 48mm in Araxos,
10mm in Kalamata, 25mm in Antirio, 24mm in Mesologi (17/10),
34mm in Adravida, 9mm in Araxos, 34mm in Kalamata,
20mm in Tripoli, 14mm in Astros, 15mm in Argos (18/10).

Third 10-day period

Locally significant amounts of precipitation.

More specific:
13mm in Othonoi (22/10),
14mm in Kastoria, 3mm in Serres, 9mm in Edessa,
9mm in Kozani, 14mm in Preveza, 4mm in Ioannina,
20mm in Konitsa, 6mm in Argostoli, 6mm in Zakynthos (26/10),
13mm in Ioannina (28/10), 11mm in Othonoi (31/10).



*Deviation of monthly precipitation height
from normal values (%)*

TABLE OF MEAN VALUES

STATION	Longitude	Lattitude	Tmean	TX	TN	RR	INST
SERRES	23,53	41,07	19,6	26,7	12	15	186
FLORINA	21,40	40,78					
KASTORIA	21,27	40,45	16,1	23,7	8,5	28	214
TRIKALA_IMATHIAS	22,55	40,60					
THESSALONIKI	22,97	40,52	20,2	24,9	14,7	8	217
CHRYSOUPOLI	24,62	40,92	17,8	23,7	12	12	201
ALEXANDROUPOLI	25,95	40,85	19,2	24	13,6	5	215
KOZANI	21,83	40,28	16,5	23,2	10,5	20	
KERKYRA	19,92	39,62	22,4	26,5	18	28	220
IOANNINA	20,82	39,70	18	24,7	10,3	42	206
PREVEZA	20,76	38,91	22,3	26,7	17,6	42	
TRIKALA_THESSALIAS	21,77	39,52					
LARISA	22,45	39,65	19	25,2	12,6	12	193
LIMNOS	25,23	39,92	19,8	23,3	16,2	1	204
ARTA	21,00	39,17					
AGHIALOS	22,78	39,21	19,7	25,1	14,8	16	221
MYTILINI	26,60	39,05	21,1	25,1	17,5	2	240
VELO	22,77	37,97					
AGRINIO	21,35	38,60					
LAMIA	22,43	38,87					
ANDRAVIDA	21,28	37,92	20,8	26,6	15	36	257
SKYROS	24,48	38,96	20,9	24,3	17,2	4	239
ARGOSTOLI	20,50	38,12	22,4	26,1	18,6	10	261
ARAXOS	21,42	38,15	21,3	27	15,5	57	262
TANAGRA	23,57	38,33	20,2	26,2	13,7	0	240
HIOS	26,13	38,35	20,7	24,1	16,2	2	254
PYRGOS	21,42	37,67					
TRIPOLI	22,40	37,52	17	24,5	8,2	21	236
TATOI	23,78	38,10	19,8	24,9	14,5	3	
HELLINIKO	23,73	37,90	22,3	27,1	19	1	260
ELEYSINA	23,55	38,07	22	26,4	17,7	2	
ZAKYNTHOS	20,88	37,75	21,9	26,4	16,2	8	259
SAMOS	26,92	37,68	22,2	26,2	17,9		
ARGOS	22,75	37,63					
KALAMATA	22,02	37,07	21,1	27,5	14,6	57	249
NAXOS	25,37	37,10					
METHONI	21,70	36,82					
MHLOS	24,43	36,73					
SPATA	23,95	37,95	21	25,2	15,6	0	
KOS	27,08	36,80	22,7	25,9	20,1		
KYTHIRA	22,98	36,15					
SANTORINI	25,41	36,41					
SOUDA	24,12	35,55	20,9	24,7	17,5	4	246
RODOS	28,08	36,40	24,2	26,7	21,4		272
MYKONOS	25,35	37,43	21	23,3	18,8		
HRAKLEIO	25,18	35,33	22,1	25,2	18,6		275
IERAPETRA	25,73	35,02					
SITEIA	26,10	35,21	22	24	19,5	0	
RETHYMNO	24,50	35,36					
TYMPAKI	24,76	35,06					
KASTELI	25,33	35,18	20	24,9	15,6		240
KARPATOS	27,15	35,42	23,1	25,7	21,4	4	
PAROS	25,13	37,02	21,6	24,6	18,6		264
SYROS	24,95	37,42	21,7	24,6	19,4		260
IKARIA	26,35	37,68					

11,314,58,13617810,214,16,45611,314,57,89612510,713,7820210,5165,88616112,715,410,232137

**TABLE OF DEVIATIONS
FROM NORMAL VALUES**

STATION	TMEAN (deviation) (I)	PRECI (deviation %) (II)
SERRES	3,7	34
FLORINA		
THESSALONIKI	3,8	20
ALEXANDROUPOLI	3,4	10
KOZANI	2,9	39
KERKYRA	3,7	19
IOANNINA	2,9	44
LARISA	2,8	26
LIMNOS	3	3
AGHIALOS	2,8	25
MYTILINI	2,6	5
AGRINIO		
SKYROS	2,6	10
ARGOSTOLI	2,5	9
ARAXOS	2,3	67
HIOS	2,5	5
HELLINIKO	2,7	2
ZAKYNTHOS	2,1	6
SAMOS	2,7	-
KALAMATA	2,1	57
NAXOS		
METHONI		
SANTORINI		
SOUDA	1,8	5
RODOS	3,4	-
HERAKLIO	2,0	-
SITIA	1,8	-

(I) deviation of mean temperature from normal values
 (II) deviation of monthly precipitation height from normal values %.

Climatic Bulletin

General Description

Precipitation amounts were lower enough than normal values mainly over south and east parts of Greece.
The mean temperature varied higher enough than normal values everywhere.

Climatic Parameters :

- ❖ **Normal Values** : normal values for various parameters (temperature, precipitation, etc) are defined as mean values calculated for 30 years. These normal values are used as basis and represent the mean situation. They can be specified in 10 daily, monthly, seasonally and yearly level and are used for the trend comparison of 10 days, month, season or year as: rainy decameron, mild winter, cool August etc.

Measurement :

- ❖ **Precipitation**
1 mm = 1 litre/m²

Table Legend :

T_{mean} : Mean Temperature
 TN : Minimum Temperature
 TX : Maximum Temperature
 RR : Precipitation height(mm)
 INST : Sun Duration (hours)

UTC hours (Universal Time Coordinates) in Greece :

- ❖ Winter : UTC hour = local hour - 2
- ❖ Summer : UTC hour = local hour - 3

© Hellenic National Meteorological Service
 Reproduction is prohibited without written authorization
 14 El.Venizelou 16777
 Helliniko, Athens
 Greece