




# Climatic Bulletin

January 2024

 **Max  
temperature**

 **Min  
temperature**

 **Mean  
temperature**

 **Precipitation**

 **Sunshine  
duration**

January was warmer than normal levels over every part of Greece.

Also the precipitation amounts were higher than the normal values, mainly over the west parts and over the island of Crete as well.

Meanwhile local snowfalls recorded occasionally, with the most remarkable of them during the last three days of the month.



# Temperature

### First 10-day period

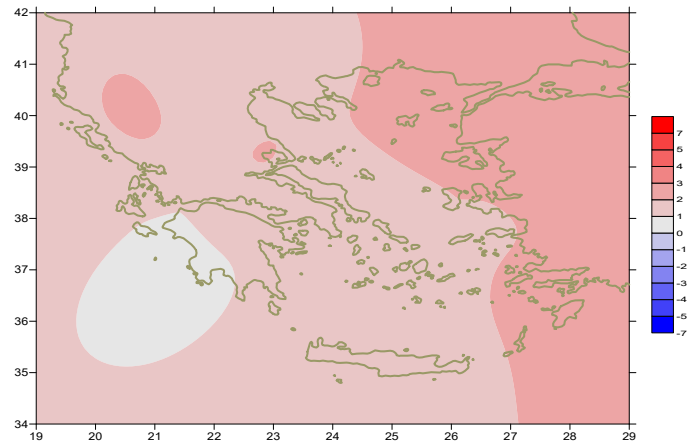
More specific (varied) :

**Minimum:**

from -2°C to 13°C over north mainland,  
 from 0°C to 15°C over central mainland,  
 from 2°C to 17°C over rest parts.

**Maximum:**

from 3°C to 18°C over north mainland,  
 from 6°C to 22°C over central mainland,  
 from 8°C to 20°C over rest parts.



*Deviation of mean temperature from normal values*

### Second 10-day period

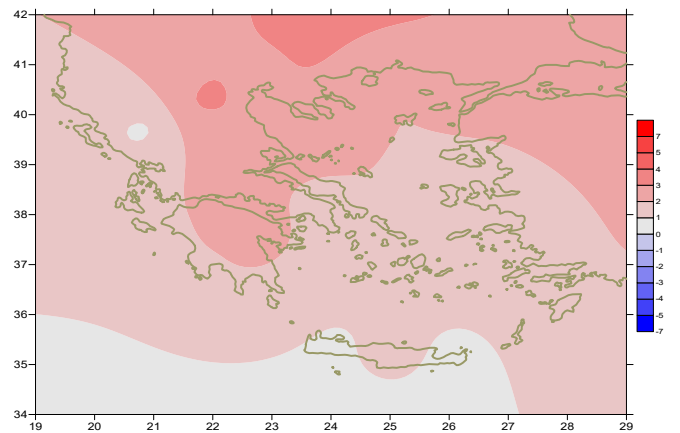
More specific (varied) :

**Minimum:**

from -10°C to 14°C over north mainland,  
 from -3°C to 15°C over central mainland,  
 from 2°C to 17°C over rest parts.

**Maximum:**

from 5°C to 20°C over north mainland,  
 from 6°C to 23°C over central mainland,  
 from 9°C to 23°C over rest parts.



*Deviation of maximum temperature from normal values*

### Third 10-day period

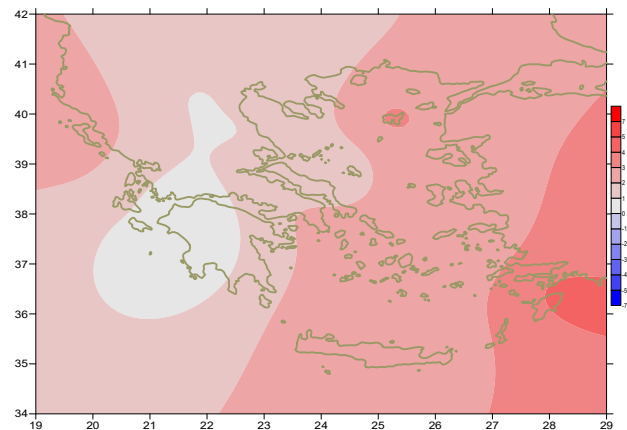
More specific (varied) :

**Minimum:**

from -19°C to 3°C over north mainland,  
 from -6°C to 6°C over central mainland,  
 from 2°C to 10°C over rest parts.

**Maximum:**

from -2°C to 16°C over north mainland,  
 from 5°C to 19°C over central mainland,  
 from 7°C to 21°C over rest parts.



*Deviation of minimum temperature from normal values*



## Precipitation

### First 10-day period

Locally significant amounts of precipitation.  
More specific:

21mm in Gavdos, 23mm in Kos (1/1),  
17mm in Serres, 29mm in Kastoria, 18mm in Kozani, 39mm in Preveza,  
85mm in Ioannina, 59mm in Konitsa, 62mm in Kerkira, 20mm in Zakynthos,  
25mm in Othonoi, 35mm in Kalamata (7/1),  
19mm in Preveza, 30mm in Othonoi, 35mm in Tripoli (8/1),  
17mm in Zakynthos, 15mm in Paros, 36mm in Chios, 24mm in Mitilini,  
30mm in Mitilini (9/1), 21mm in Kastelli, 27mm in Kalimnos (10/1).

### Second 10-day period

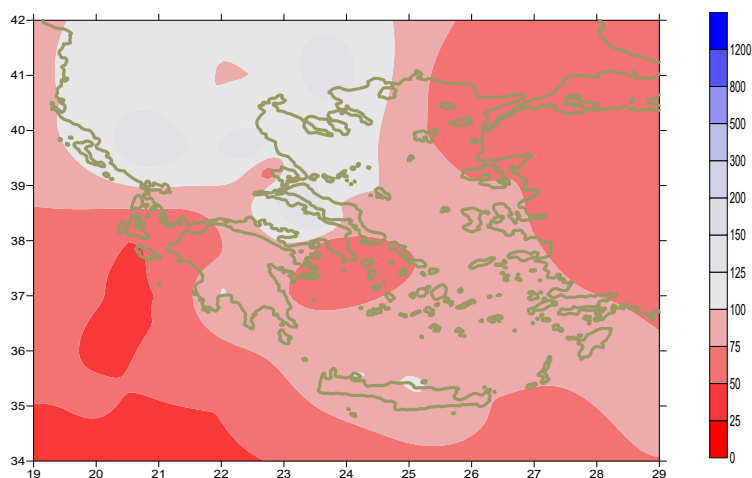
Locally significant amounts of precipitation.  
More specific:

29mm in Kalamata, 14mm in Zakynthos, 14mm in Heraklion, 14mm in Gavdos (12/1),  
16mm in Souda, 14mm in Skiathos, 13mm in Kastelli (13/1),  
31mm in Kerkira, 13mm in Argostoli, 16mm in Othonoi, 16mm in Kozani,  
14mm in Mikonos (15/1),  
16mm in Kalamata, 14mm in Argos, 23mm in Chios,  
40mm in Mitilini, 16mm in Ikaria (16/1),  
19mm in Doxato, 25mm in Serres, 29mm in Ioannina, 22mm in Konitsa (20/1).

### Third 10-day period

Locally significant amounts of precipitation.

More specific:  
22mm in Oreoi, 43mm in Astipalea (21/1),  
19mm in Heraklion, 30mm in Souda (28/1),  
22mm in Skiathos, 19mm in Karistos, 18mm in Tanagra (29/1),  
47mm in Karistos, 26mm in Tanagra, 18mm in Tatoi,  
18mm in Elefsinna (21/1),  
40mm in Heraklion, 29mm in Souda, 28mm in Kastelli (31/1).



**Deviation of monthly precipitation height  
from normal values (%)**

TABLE OF MEAN VALUES

STATION	Longitude	Lattitude	Tmean	TX	TN	RR	INST
SERRES	23,53	41,07	5,5	11	1	48	108
FLORINA	21,40	40,78					
KASTORIA	21,27	40,45	3,7	9,5	-1,9	55	121
TRIKALA_IMATHIAS	22,55	40,60					
THESSALONIKI	22,97	40,52	7,1	11,7	2,9	35	172
CHRYSOUPOLI	24,62	40,92	6,8	12,4	1,9	17	178
ALEXANDROUPOLI	25,95	40,85	7,4	11,4	3,6	4	166
KOZANI	21,83	40,28	3,8	9,2	-0,4	29	
KERKYRA	19,92	39,62	11,6	15,3	7,8	144	124
IOANNINA	20,82	39,70	6,7	11,2	1,9	177	119
PREVEZA	20,76	38,91	11,1	14,7	8,2	88	
TRIKALA_THESSALIAS	21,77	39,52					
LARISA	22,45	39,65	6,9	12,5	1,4	36	153
LIMNOS	25,23	39,92	9,9	12,8	7,5	48	140
ARTA	21,00	39,17					
AGHIALOS	22,78	39,21	8,5	13,9	4,3	22	157
MYTILINI	26,60	39,05	11,4	13,8	9,3	99	132
VELO	22,77	37,97					
AGRINIO	21,35	38,60					
LAMIA	22,43	38,87					
ANDRAVIDA	21,28	37,92	10,4	15,4	6	53	140
SKYROS	24,48	38,96	11,7	14,2	8,9	74	115
ARGOSTOLI	20,50	38,12	12,8	15,9	10	48	157
ARAXOS	21,42	38,15	11,1	15,6	6,6	39	170
TANAGRA	23,57	38,33	8,9	13,4	4,9	79	86
HIOS	26,13	38,35	11,7	14,4	8,7	85	100
PYRGOS	21,42	37,67					
TRIPOLI	22,40	37,52	6,4	12,5	1,7	66	113
TATOI	23,78	38,10	9	13	4,9	56	
HELLINIKO	23,73	37,90	11,7	15,1	9,2	15	114
ELEYSINA	23,55	38,07	10,7	14,4	7,5	35	
ZAKYNTHOS	20,88	37,75	12,2	15,6	8,2	69	184
SAMOS	26,92	37,68	12,2	14,9	9,3		
ARGOS	22,75	37,63					
KALAMATA	22,02	37,07	11	16,9	6,1	118	157
NAXOS	25,37	37,10					
METHONI	21,70	36,82					
MHLOS	24,43	36,73					
SPATA	23,95	37,95	10,9	14,2	7,2	43	
KOS	27,08	36,80	13,2	15,3	11,6	77	
KYTHIRA	22,98	36,15					
SANTORINI	25,41	36,41					
SOUDA	24,12	35,55	12,5	15,3	10,5	128	116
RODOS	28,08	36,40	14,7	16,8	13	76	155
MYKONOS	25,35	37,43	12,5	14	11,3	58	
HRAKLEIO	25,18	35,33	13,8	16,5	11,9	93	126
IERAPETRA	25,73	35,02					
SITEIA	26,10	35,21	13,9	16,2	11,7	16	125
RETHYMNO	24,50	35,36					
TYMPAKI	24,76	35,06					
KASTELI	25,33	35,18	11,1	13,7	8,8	136	104
KARPATOS	27,15	35,42	15,2	17,4	13,6	20	
PAROS	25,13	37,02	13,1	15,2	10,9	21	127
SYROS	24,95	37,42	13	15	11,2	35	139
IKARIA	26,35	37,68					

11,314,58,13617810,214,16,45611,314,57,89612510,713,7820210,5165,88616112,715,410,232137

**TABLE OF DEVIATIONS  
FROM NORMAL VALUES**

STATION	TMEAN ( deviation) (I)	PRECI (deviation % ) (II)
SERRES	16	136
FLORINA		
THESSALONIKI	2	95
ALEXANDROUPOLI	2.5	7
KOZANI	1.8	74
KERKYRA	1.9	109
IOANNINA	2.1	136
LARISA	1.8	121
LIMNOS	2.3	66
AGHIALOS	2.1	46
MYTILINI	2.1	76
AGRINIO		
SKYROS	1.8	95
ARGOSTOLI	1.2	41
ARAXOS	1	41
HIOS	2	73
HELLINIKO	1.5	33
ZAKYNTHOS	0.9	46
SAMOS	1.9	
KALAMATA	0.8	104
NAXOS		
METHONI		
SANTORINI		
SOUDA	1.7	90
RODOS	2.8	51
HERAKLIO	1.8	102
SITIA	1.6	17

(I) deviation of mean temperature from normal values  
 (II) deviation of monthly precipitation height from normal values %.

# Climatic Bulletin

## General Description

Precipitation amounts were higher than normal values mainly over the island of Crete and over the west mainland.  
The mean temperature varied higher than normal values everywhere.

### Climatic Parameters :

- ❖ **Normal Values** : normal values for various parameters (temperature, precipitation, etc) are defined as mean values calculated for 30 years. These normal values are used as basis and represent the mean situation. They can be specified in 10 daily, monthly, seasonally and yearly level and are used for the trend comparison of 10 days, month, season or year as: rainy decameron, mild winter, cool August etc.

### Measurement :

- ❖ **Precipitation**  
1 mm = 1 litre/m<sup>2</sup>

### Table Legend :

Tmean : Mean Temperature  
TN : Minimum Temperature  
TX : Maximum Temperature  
RR : Precipitation height(mm)  
INST : Sun Duration (hours)

### UTC hours (Universal Time Coordinates) in Greece :

- ❖ Winter : UTC hour = local hour - 2
- ❖ Summer : UTC hour = local hour - 3

© Hellenic National Meteorological Service  
Reproduction is prohibited without written authorization  
14 El.Venizelou 16777  
Helliniko, Athens  
Greece