




# Climatic Bulletin

December 2009

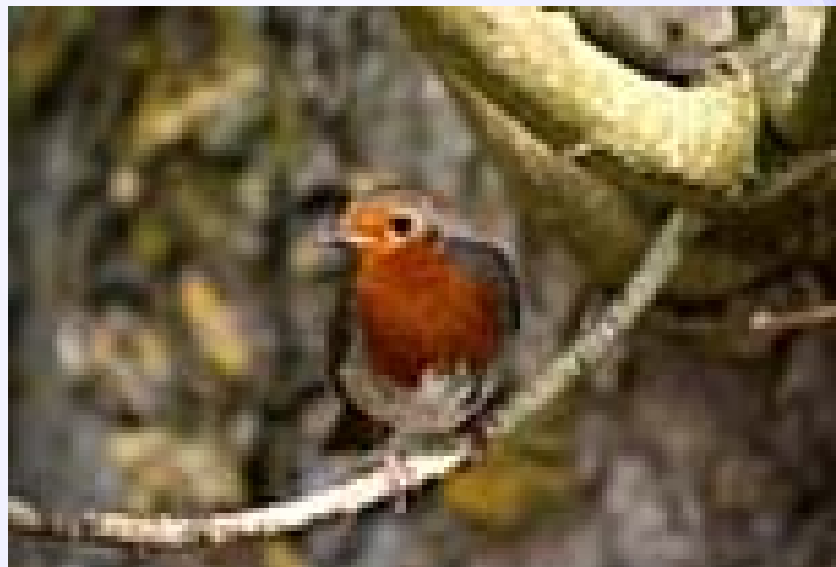
 Max  
temperature

 Min  
temperature

 Mean  
temperature

 Precipitation

 Sunshine  
duration



It was the warmest December of the last ten years for the whole *Greek* area. It gave heavy rainfalls and thunderstorms while snowfalls localized at mountainous northern-central country, with the exception of low altitude regions of northern mainland. During last ten days the maximum temperature frequently exceeded twenty (20) degrees Celsius at every part of *Greece*.

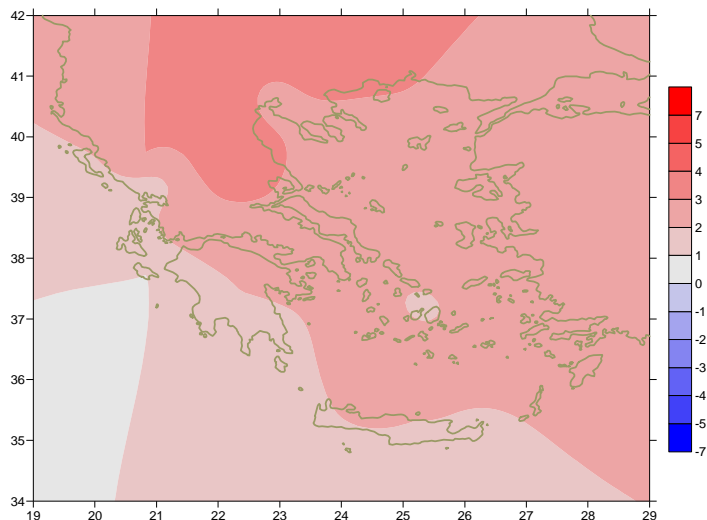


## Temperature

### First Decameron

**Minimum:** Initially the values were high over Northwestern mainland but reduced after 8/12. Some of the lowest:  $-0.6^{\circ}\text{C}$  in Kastoria and  $-0.6^{\circ}\text{C}$  in Ioannina at 8/12.

**Maximum:** Unusual high values recorded over NW parts :  $4.4^{\circ}\text{C}$  in Kozani,  $5.4^{\circ}\text{C}$  in Kastoria at 10/12.

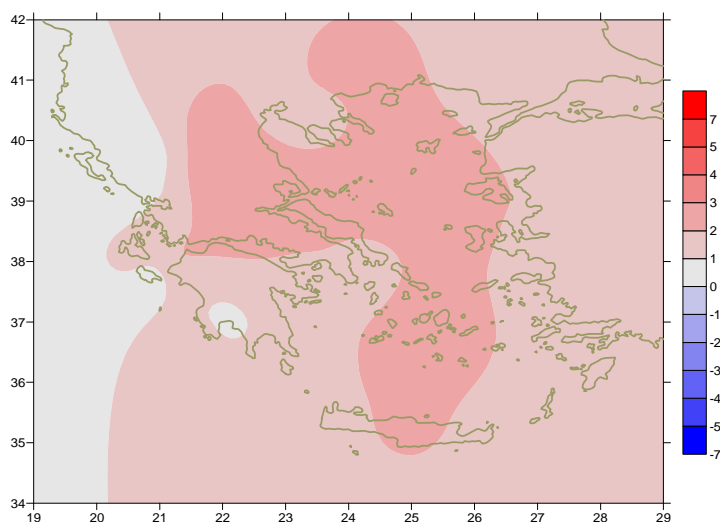


*Deviation of mean temperature from normal values*

### Second Decameron

**Minimum:** The values increased mostly at the middle of period. Some of the lowest that were noticed are  $-0.8^{\circ}\text{C}$  in Tripoli (13/12),  $-3.8^{\circ}\text{C}$  in Kastoria at 19/12.

**Maximum:** From the lowest values:  $2.6^{\circ}\text{C}$  in Trikala (Imathias) at 19/12 and  $1.8^{\circ}\text{C}$  in Kastoria.

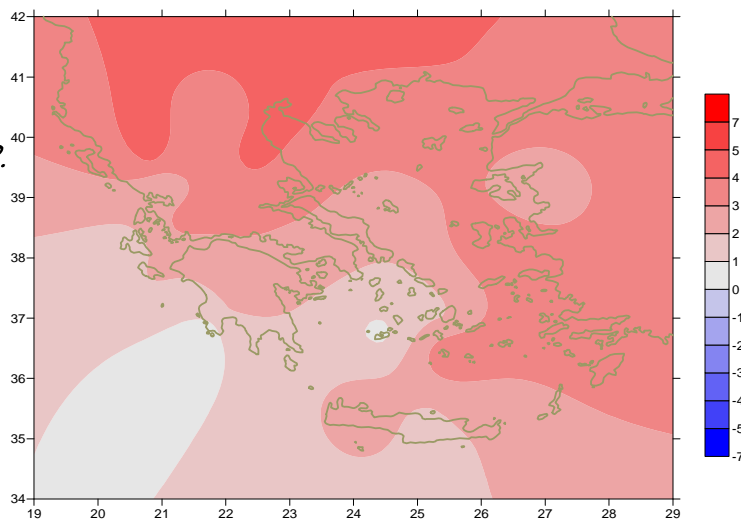


*Deviation of maximum temperature from normal values*

### Third Decameron

**Minimum:** The values were relatively high after 23/12. More specific: from the lowest  $-2.2^{\circ}\text{C}$  in Serres at 21/12 and  $-2^{\circ}\text{C}$  in Kastoria at 22/12.

**Maximum:** Unusual high values recorded everywhere. For example:  $25.8^{\circ}\text{C}$  in Iraklion,  $23.3^{\circ}\text{C}$  in Leonidio (eastern Peloponnese) and  $21^{\circ}\text{C}$  in Thessaloniki at 27/12.



*Deviation of minimum temperature from normal values*



## Precipitation

### First Decameron

Strong rainfalls and thunderstorms recorded at 2-3/12 and 10/12 all over Greece.

More specific: 105mm in Kerkyra ,  
52mm in Santorini at 2/12,  
137mm in Volos,  
83mm in Samos,  
56mm in Rodos at 10/12.

### Second Decameron

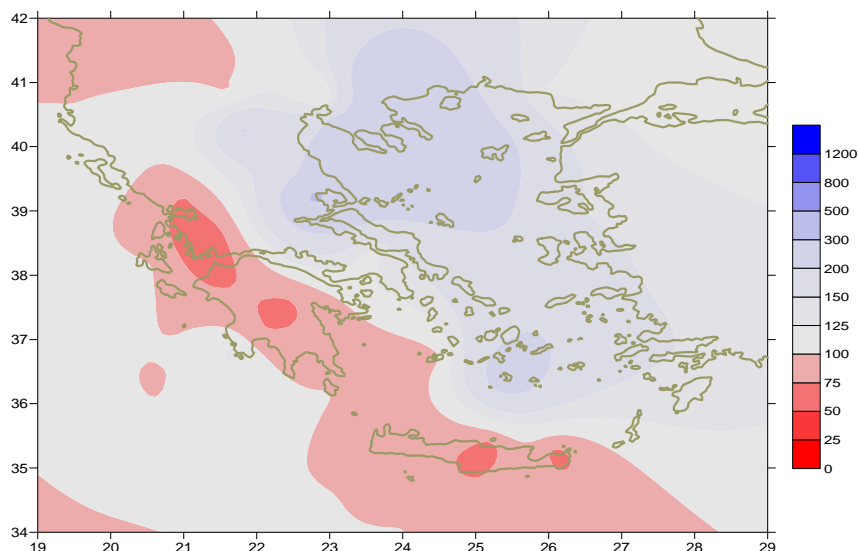
High precipitation recorded mainly over west , north parts and eastern Aegean. (Remarkable snowfalls over north-central mainland).

More specific: 43mm in Limnos (16/12),  
52mm in Chios (16/12),  
67mm in Konitsa (20/12),  
43mm in Ioannina (20/12).

### Third Decameron

No significant precipitation was recorded.

More specific: 12mm in Ikaria (21/12),  
17mm in Arta (26/12),  
16mm in Tripoli (28/12).



*Deviation of monthly precipitation height from normal values (%)*

## TABLE OF MEAN VALUES

STATION	Longitude	Latitude	Tmean	TX	TN	RR	INST
SERRES	23,53	41,07	8,1	11,3	4,9	111	29
FLORINA	21,40	40,78					
KASTORIA	21,27	40,45	6,6	10,3	3	116	77
TRIKALA_IMATHIAS	22,55	40,60	8,6	11,7	6,2	144	53
THESSALONIKI	22,97	40,52	9,5	12	6,9	102	57
CHRYSOUPOLI	24,62	40,92	9,9	12,6	7,4	101	43
ALEXANDROUPOLI	25,95	40,85	9,9	12,6	7,2	108	55
KOZANI	21,83	40,28	7	10,6	3,7	113	
KERKYRA	19,92	39,62	13	15,7	10	206	56
IOANNINA	20,82	39,70	8,8	11,6	6	171	28
PREVEZA	20,76	38,91	13,2	15,9	10,6	119	
TRIKALA_THESSALIAS	21,77	39,52	9,7	13,9	6,1	131	
LARISA	22,45	39,65	9,7	13,7	6,2	88	73
LIMNOS	25,23	39,92	12,2	14,6	9,7	186	61
ARTA	21,00	39,17	11,5	15,9	8,3	144	76
AGHIALOS	22,78	39,21	11,1	14,9	7,7	204	79
MYTILINI	26,60	39,05	13,7	15,8	11,1	209	78
VELO	22,77	37,97	12,8	17,4	8,6	98	107
AGRINIO	21,35	38,60	12,2	16,7	8,4	89	82
LAMIA	22,43	38,87	11	15,2	7,1	102	82
ANDRAVIDA	21,28	37,92	13,3	16,8	10,3	68	104
SKYROS	24,48	38,96	13,8	16,2	11,6	167	70
ARGOSTOLI	20,50	38,12	14,2	16,9	11,5	130	113
ARAXOS	21,42	38,15	13,5	17,3	9,9	80	115
TANAGRA	23,57	38,33	11,8	15,9	7,7	105	90
HIOS	26,13	38,35	14,1	16,3	11,3	218	69
PYRGOS	21,42	37,67	10,2	13	7,3	108	75
TRIPOLI	22,40	37,52	8,8	12,7	5,4	101	108
TATOI	23,78	38,10	11,5	15	8,5	99	
HELLINIKO	23,73	37,90	14,1	16,5	11,2	87	93
ELEYSINA	23,55	38,07	12,9	16,5	9,9	105	
ZAKYNTHOS	20,88	37,75	13,8	16,5	11,8	160	93
SAMOS	26,92	37,68	14,3	16,8	11,8	258	91
ARGOS	22,75	37,63					
KALAMATA	22,02	37,07	12,8	17,2	9,1	121	110
NAXOS	25,37	37,10	15,5	18	12,7	132	93
METHONI	21,70	36,82	14,3	17,8	10,2	187	125
MHLOS	24,43	36,73	14,6	16,8	11	83	
SPATA	23,95	37,95	13,4	16,7	9,8	94	
KOS	27,08	36,80	14,6	16,8	12,8	113	
KYTHIRA	22,98	36,15					
SANTORINI	25,41	36,41	15,6	17,7	13,9	152	141
SOUDA	24,12	35,55	14,7	18	11,9	78	140
RODOS	28,08	36,40	15,8	18,1	13,8	213	113
MYKONOS	25,35	37,43	14,3	16,6	12,6	82	
HERAKLEIO	25,18	35,33	15,8	19,5	12,6	50	138
IERAPETRA	25,73	35,02					
SITEIA	26,10	35,21	15,8	18,5	13,3	58	139
RETHYMNO	24,50	35,36					
TYMPAKI	24,76	35,06	14,8	19,3	11,2	160	117
KASTELI	25,33	35,18					
KARPATHOS	27,15	35,42	16	18	14,1	96	
PAROS	25,13	37,02					
SYROS	24,95	37,42	15	17,1	12,3	115	130
IKARIA	26,35	37,68	14,3	18,6	12,7	150	

# Climatic Bulletin

## General Description

Precipitation amounts were much higher than normal values over Thessalia, west and central Macedonia and most of Aegean areas. The mean temperature varied higher than normal values, all over Greek area and mainly over Northern mainland.

### Climatic Parameters :

- ❖ **Normal Values** : normal values for various parameters (temperature, precipitation, etc) are defined as mean values calculated for 30 years. These normal values are used as basis and represent the mean situation. They can be specified in 10 daily, monthly, seasonally and yearly level and are used for the trend comparison of 10 days, month, season or year as: rainy decameron, mild winter, cool August etc.

### Measurement :

- ❖ **Precipitation**  
1 mm = 1 litre/m<sup>2</sup>

### Table Legend :

Tmean : Mean Temperature  
 TN : Minimum Temperature  
 TX : Maximum Temperature  
 RR : Precipitation Height  
 (mm)  
 INST : Sun Duration (hours)

### UTC hours (Universal Time Coordinates) in Greece :

- ❖ Winter : UTC hour = local hour - 2
- ❖ Summer : UTC hour = local hour - 3

© Hellenic National Meteorological Service  
 Reproduction is prohibited without written authorization  
 14 El.Venizelou 16777  
 Helliniko, Athens  
 Greece